

ST. EDMUND'S CofE

*Learning through faith, we dream,  
we believe and achieve.*

N  
E  
W  
S  
L  
E  
T  
T  
E  
R



OUR VALUES: PERSEVERANCE • RESPECT • JUSTICE & FORGIVENESS • TRUTH & TRUST • RESPONSIBILITY • COMPASSION

01623 646 624

office@st-edmunds.notts.sch.uk

st-edmunds.notts.sch.uk

Find us on



St. Edmund's CofE Primary  
and Nursery School

....A journey to discover life in all its fullness  
(John, 10:10)

#BeaconofExcellence #SixcessValues

Issue:

#5

Term:

Autumn

Date:

October 2025

## Diary Dates:

Monday	Tuesday	Wednesday	Thursday	Friday	Saturday	Sunday
				1 Autumn 1st Term	2	3
4	5	6 Autumn 1st Term	7 Autumn 1st Term	8 Autumn 1st Term	9	10
11 Autumn 1st Term	12 Autumn 1st Term	13 Autumn 1st Term	14 Autumn 1st Term	15 Autumn 1st Term	16	17
18	19 Autumn 1st Term	20	21	22	23	24
25 Autumn 1st Term	26	27	28 Autumn 1st Term	29	30	

Found here: [School Calendar](#)

Key dates can be found on the  
school website calendar.



## Headteacher Message:

Dear Parents and Carers,

Welcome back to school for what is always one of the most joyful and bustling terms of the year. Autumn 2 at St. Edmund's is a season of sparkle and song — nativity rehearsals echo down the corridors, our carol concerts are warming up, and we prepare once again for the wonder of Christingle and Christmas celebrations. It's a time that truly reminds us what it means to be part of a community of faith, hope, and kindness.

Looking back over the first part of the year, I am so proud of how our children have settled and thrived. Their curiosity, creativity, and determination continue to shine. We've seen some remarkable achievements already — from pupils confidently tackling times tables and phonics to older children demonstrating impressive learning in reading, writing, and maths.

In our Early Years, we continue to see strong progress, with more of our youngest learners developing the foundations they need for lifelong learning. As always, your support at home — reading together, practising key skills, and engaging with homework — makes a tremendous difference.

As we head into the run-up to Christmas, there is much to look forward to. From nativities to carol services, Christmas jumper days to community outreach, this half-term will be filled with moments that remind us why we are proud to be part of the St. Edmund's family. Each event provides a chance to celebrate not just our children's talents, but the shared values that bind us together — faith, compassion, and perseverance.

Thank you, as always, for your continued partnership and support. Together, we will make this final term of 2025 a time of joy, learning, and celebration — a journey to discover life in all its fullness (John 10:10).



With warmest wishes,  
Mr Anthony Bandy-Webb  
Headteacher





## Vision, Aims & Values:

At St. Edmund's C of E Primary and Nursery School, we aspire to be a beacon of excellence, a vibrant and welcoming Christian community where all children flourish spiritually, academically, socially, and emotionally. Inspired by the teachings of the Bible, we foster a culture of curiosity, creativity, compassion, and service. Here, every child is known, valued, and empowered to become a confident, responsible, and thriving individual who makes a positive impact on the world.

By educating for life in all its fullness, we are preparing our students for a bright future. We believe that our pupils will be confident, resilient, and well-rounded individuals who are ready to make a positive impact on the world.

A #StEDDIE is a proud member of our school community who embodies our Christian values in all aspects of their life.

### 'Sixcess' Values:

Our 'Sixcess' Values underpin everything we do at St. Edmund's. They are the guiding principles for our relationships, learning, and actions.

**Respect:** We treat everyone with dignity and kindness, valuing diversity and celebrating individuality.

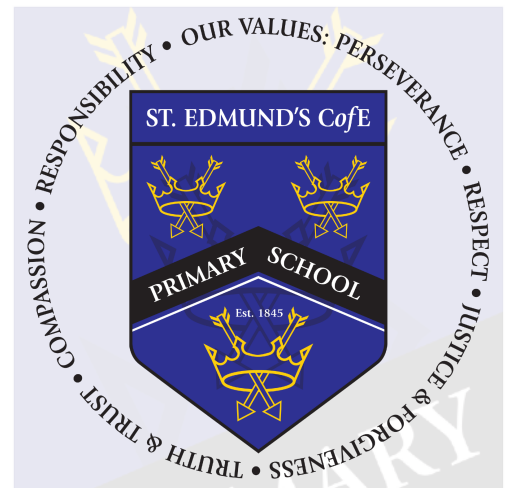
**Responsibility:** We are accountable for our actions and choices, demonstrating reliability and self-discipline.

**Perseverance:** We approach challenges with determination and resilience, learning from setbacks and striving for excellence.

**Truth and Trust:** We build strong relationships based on honesty, integrity, and reliability.

**Justice and Forgiveness:** We promote fairness, equality, and compassion, seeking to reconcile and restore relationships.

**Compassion:** We show empathy and care for others, demonstrating kindness and generosity of spirit.



*Together, inspired by Christian values, we embark on a journey to discover life in all its fullness, equipping our children to flourish and leave their positive mark on the world.*

## School Prayer:

Lord,

Bless this day and all it brings.

Thank you for our school; Make it a place of laughter and friendship, let our school be a place where we can learn and share our hopes and dreams.

Bless our lives, that we may grow in your love. Help us show forgiveness when people make mistakes - even when we have been hurt.

Bless our work, that we use our gifts and talents wisely. Encourage us to persevere when things are challenging.

Bless our hearts and teach us to care for one another.

Amen.

The school's prayer aligns closely with the Church of England's vision for a deeply Christian education system. By fostering a culture of respect, responsibility, and perseverance, the school is actively contributing to the development of well-rounded individuals.

Our new school prayer embodies the spirit of John 10:10, which promises a life of abundance and fulfilment. By nurturing a flourishing culture, we are creating an environment where our pupils can succeed and reach their full potential.

We are delighted to introduce our new school prayer, which has been thoughtfully chosen by our staff and children. This prayer reflects our commitment to fostering a positive and nurturing learning environment where our pupils can thrive.

The prayer incorporates our school's "Sixcess" values: respect, responsibility, perseverance, truth and trust, compassion, justice, and forgiveness. These values are fundamental to our school community and guide our daily interactions.

We hope that this prayer will inspire our pupils to develop a sense of belonging, compassion, and resilience. It is our belief that by embracing these values, we can create a school where everyone feels safe, supported, and valued.



## School Expectations:



## Our School Expectations:

Our behaviour policy is underpinned by our Christian values of **respect**, **truth and trust**, **compassion**, **responsibility**, **justice and forgiveness**, and **perseverance**. These values are integral to creating a positive and nurturing learning environment where all pupils feel safe, valued, and empowered to reach their full potential.

Parents and carers:

Parents and carers, where possible, should:

- \* Support their child in adhering to the school's behaviour policy
- \* Inform the school of any changes in circumstances that may affect their child's behaviour
- \* Discuss any behavioural concerns with the class teacher promptly
- \* Take part in any pastoral work following misbehaviour (for example, attending reviews of specific behaviour interventions)
- \* Raise any concerns about the management of behaviour with the school directly, while continuing to work in partnership with the school
- \* Take part in the life of the school and its culture

## 5 Pillars of Pivotal Practice:



The school will endeavour to build a positive relationship with parents and carers by keeping them informed about developments in their child's behaviour and the school's policy, and working in collaboration with them to tackle behavioural issues.

**Ready** to learn;

**Respectful** of themselves and others;

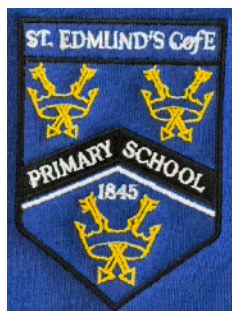
**Responsible** in school

Drawing upon the Church of England's values and aims for flourishing schools, we believe in:

- Educating for Dignity and Respect: Promoting the inherent dignity and value of every person, created in the image of God. We celebrate diversity and encourage children to treat everyone with kindness, compassion, and respect.



## School Uniform:



Our children wear:	PE Kit
<ul style="list-style-type: none"> <li>• Polo shirts, shirts or blouses in white or blue</li> <li>• Sweatshirts, cardigans or jumpers in royal blue</li> <li>• Long trousers or shorts in grey or black</li> <li>• Knee-length skirts in grey or black</li> <li>• Pinafore dresses in blue</li> <li>• Socks and/or tights in white, grey or black</li> <li>• Black shoes or plain black/grey trainers with no logos (sensible boots may also be worn in bad weather)</li> <li>• All shoes must have a low heel</li> </ul>	<ul style="list-style-type: none"> <li>• Plain white or blue t-shirt, or a t-shirt with our school logo</li> <li>• Shorts/tracksuit bottoms in blue or black</li> <li>• Sensible trainers for outdoor use or plimsolls</li> <li>• Tracksuit top or jumper in blue or black</li> </ul> <p><b><u>Jewellery</u></b></p> <p>Jewellery is not to be worn by pupils in school.</p>
<p>School uniform does not have to have our logo on it. You are very welcome to purchase non-branded uniform from a supermarket or other supplier, as long as the colours match ours.</p>	<p>On the day that your child has PE, they should come to school in their PE kit instead of their usual school uniform. This saves time with getting changed in school and also avoids items of clothing getting lost.</p>

For branded school uniform, check out this website: [myclothing.com](https://myclothing.com)





## News 1: Wonderful News from Year 1!



We're absolutely delighted to share some joyful news — **Miss Markwell**, our fantastic Year 1 teacher, is expecting a baby! We're all thrilled for her and wish her every happiness as she prepares for this exciting new chapter.

Miss Markwell will begin her maternity leave towards the end of January, but rest assured, the children will continue to be in very safe hands. We're pleased to announce that **Miss Lauren Dean** has been appointed as her maternity cover and will be joining the St. Edmund's family this half term to get to know the children, staff, and routines ahead of the transition.

We know you'll join us in congratulating Miss Markwell on her wonderful news and in giving Miss Dean a very warm St. Edmund's welcome.



## News 2: Potential School Library Design:

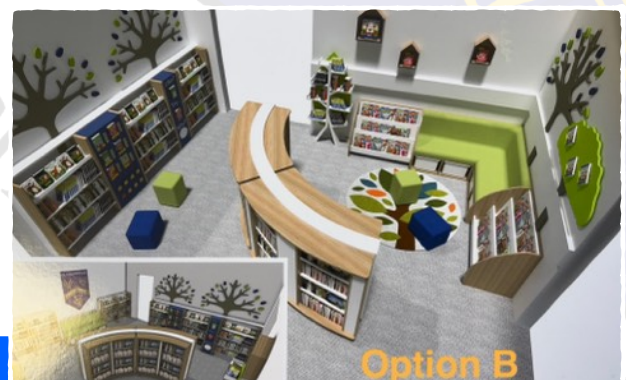
We're excited to share some potential designs for a brand new school library!

Reading is so important, and a great library is the perfect place to get our #StEDDIES even more excited about books!

These are just some initial ideas, with the cost in the region of £12k.

As most of you are aware, our financial situation is challenging and we rely on awesome gestures from local businesses and our wonderful community.

If you know someone/business who would be interested in our library development, please let us know...we would love to collaborate with them!





## News: A Big Thank You to Pagabo!

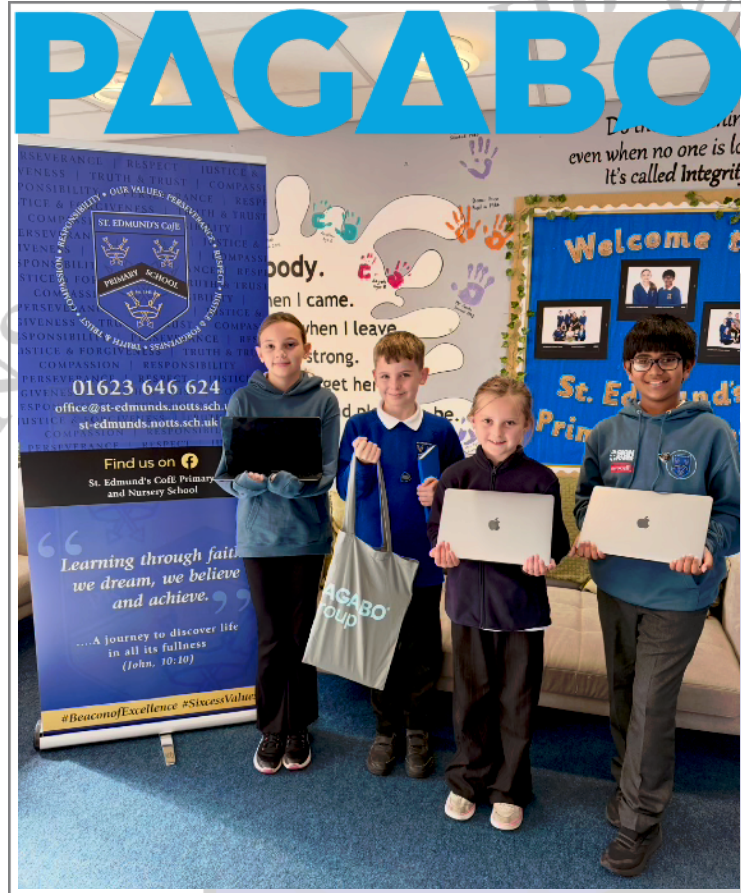
We're thrilled to share that St. Edmund's has received a generous donation of MacBook Pros from the company Pagabo — an incredible boost to our growing use of technology across the school!

This wonderful gift means our teachers now have even greater opportunities to plan, create, and deliver lessons that inspire curiosity and deepen learning. Staff are already taking part in CPD sessions and are working towards their official Apple Teacher certification, building their confidence and expertise in using technology to enhance every child's learning experience.

From interactive lessons and creative projects to new ways of capturing progress and celebrating achievement, this initiative is helping us bring our vision to life — equipping pupils with the skills they need to thrive in a digital world.

Headteacher Mr Anthony Bandy-Webb shared:

*"Technology is a crucial part of helping our children become successful learners for the future. These new MacBook Pros and the Apple Teacher training for our staff will help us inspire creativity, collaboration, and a real love of learning. We're deeply grateful to Pagabo, specifically **Chris Slinn** for their generosity and support."*



## News: Harvest Festival:

Our school community came together in true St. Edmund's spirit for this year's **Harvest Festival** — a wonderful celebration of gratitude, generosity, and togetherness. The Church was filled with music, laughter, and the joyful sound of our children singing their hearts out as we gave thanks for the blessings of the season.

We were overwhelmed by the kindness of our families, who donated so generously to support those in need within our local community. Your contributions have been shared with the local food bank, helping to make a real difference to others at a time when it's needed most.

Moments like this remind us what it means to live out our school values of compassion, justice, and responsibility. Our children not only learned about the importance of gratitude and giving, but truly embodied it — showing that even small acts of kindness can have a big impact.

A huge thank you to everyone who joined us and donated.





## News: Book Trust Research:

**Reading supports children to develop better mental wellbeing, social skills and strong relationships**

**They feel more secure and develop deep bonds with parents/carers**

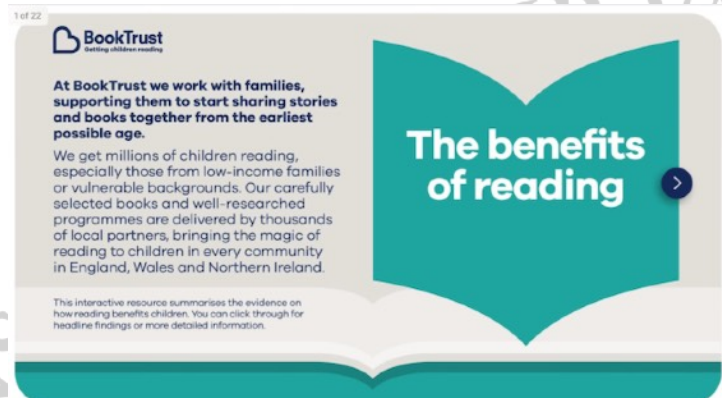
- As a bonding activity, shared reading in their early years supports the development of a child's attachment (how safe, secure and trusting they feel around their parent or carer). Attachment is essential to a child's future happiness, social competence, and ability to form meaningful connections.<sup>2</sup> The availability of their parent or carer<sup>10</sup> during shared reading contributes to a child's sense of safety.<sup>11</sup>

- Shared reading creates opportunities for joint attention and emotional closeness between a child and their parent or carer. Shared reading increases parental warmth and reduces parental stress<sup>12</sup>, enabling them to provide the sensitive and nurturing interactions their children need to thrive.<sup>13,14</sup>

**Reading supports children to meet speech and language milestones and do better at school**

**They have better brain development, attention, and cognitive ability**

- Children's brains experience the most growth in their first 5 years, when their brains are most responsive to their environment.<sup>25</sup> Stimulation from reading books, playing, talking, and singing with a parent or carer serves an important neurological function, enhancing children's cognitive, physical, social, and emotional growth.<sup>26</sup>
- Shared reading among children from low-income backgrounds enhances healthy brain activation in language, attention, memory, self-control, and adjustment.<sup>27</sup>
- Reading for pleasure has long-lasting positive benefits on brain development. Younger children who read more score better on cognitive tests.<sup>28</sup>



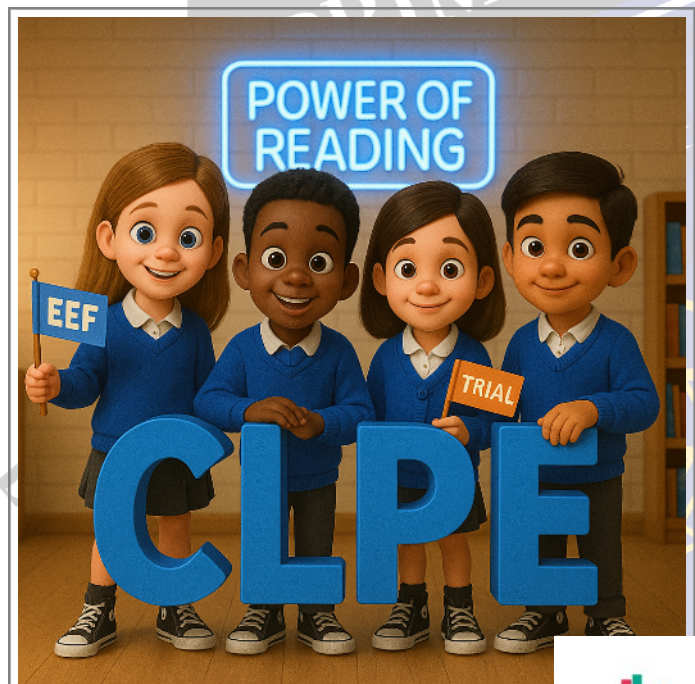
[https://  
www.booktrust.org.uk/  
globalassets/resources/  
research/booktrusts-  
benefits-of-reading-  
june-2024.pdf](https://www.booktrust.org.uk/globalassets/resources/research/booktrusts-benefits-of-reading-june-2024.pdf)

## News: St. Edmund's Chosen for National Power of Reading Trial

We're delighted to share that St. Edmund's CofE Primary and Nursery School has been selected to take part in the **Education Endowment Foundation's (EEF)** national research trial — The Power of Reading, led by the Centre for Literacy in Primary Education (CLPE).

This exciting project explores how high-quality children's literature can deepen understanding, inspire imagination, and strengthen language and reading skills. As a controlled school, St. Edmund's will play an important role in helping researchers discover what truly works in developing a lifelong love of reading.

Taking part in this national trial reflects our continued commitment to using research-informed practice to ensure every child flourishes — academically, creatively, and spiritually. 📖✨





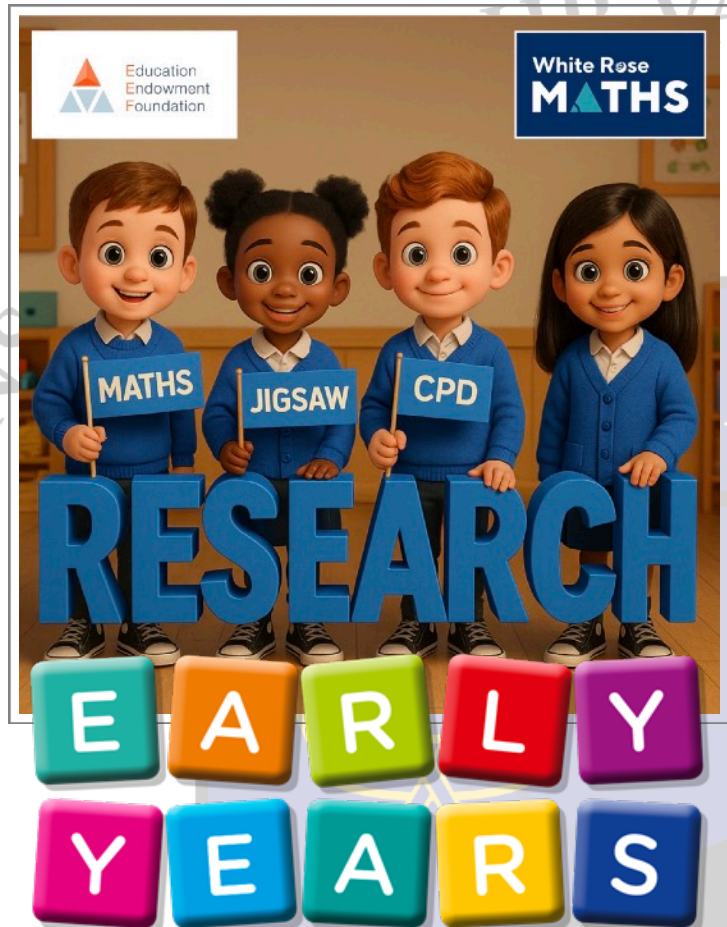
## News: Building Strong Foundations in EYFS

At St Edmund's, we believe that strong foundations in the Early Years are essential for every child to flourish — academically, socially, and emotionally. We are delighted to share that our school has been selected to take part as a controlled school in the national **Reception Jigsaw** research project, run in partnership with the Education Endowment Foundation (EEF) and White Rose Maths.

The Reception Jigsaw programme focuses on developing early mathematical understanding through playful, practical, and high-quality interactions. Our Reception staff will be engaging in a series of professional development sessions and in-school coaching, designed to strengthen the way we teach and support mathematical thinking from the very start of a child's journey.

This exciting opportunity allows us to contribute to national research, helping shape best practice for schools across the country, while directly benefiting our own pupils here at St Edmund's. By taking part, we continue our commitment to improvement, reflection, and excellence in early education — ensuring that our youngest learners build confidence, curiosity, and a lifelong love of learning.

*As always, our aim remains clear: to nurture every child's unique talents and potential through a rich, inclusive, and faith-based education — so that all our St Eddies truly flourish.*



## News: 🧡 Supporting Our St. Edmund's Families 🧡

We're pleased to share that St. Edmund's CofE Primary and Nursery School is now a **designated issuer of Food Bank vouchers**.

This means that if any of our parents or carers are in need of support, they can speak confidentially with our school office, who will be able to help.

We know that reaching out isn't always easy — but please remember, we're here to listen and to help.

Rooted in our Christian value of compassion, our school family is committed to caring for one another. No one should ever feel alone when facing difficult times.

Together, as a community, we can make sure every family feels supported and valued. 🌱







## News: Leaver's Hoodies 2025-26

There's nothing quite like the pride of wearing your very own leavers' hoodie — and this year, our Year 6 children get to enjoy them all year long! (Again!)

To mark the occasion, our pupils put together a brilliant catwalk-style video, showing off their new hoodies with confidence and smiles. They've truly earned this moment, and it's wonderful to see them celebrating their time as part of the St. Eddies family. ❤️👕

We'd like to say a huge thank you to our sponsors:

- Sign Power for creating such fantastic hoodies
- Eurocell for generously funding the cost so every child feels like they belong to our St. Eddie Team!

Your support means the world to our children and our school community.

Here's to our amazing Year 6 — walking tall, looking sharp, and full of pride! ✨



## News: A Journey through Time...



We are delighted to share that our school hall now proudly displays a tailor-made historical timeline — a stunning journey through key world events, local Mansfield Woodhouse history, including our school and the achievements of great scientists.

This masterpiece was expertly designed and created by **Sign Power**, and we are incredibly grateful to a very kind member of our community whose generosity has made this possible.

The timeline will not only brighten our hall but will also inspire curiosity, creativity, and conversation for years to come — helping our children see how they are part of history's unfolding story. 🌍📖🔍

From all of us at St. Edmund's — thank you for making this vision a reality! ❤️

## News: Phonics

We're excited to announce that we've invested in a new systematic phonics scheme, FFT Phonics For All! This comprehensive program is designed to help our pupils develop strong phonics skills and become confident readers.

In addition, the scheme includes aligned books that reinforce classroom learning and provide opportunities for independent reading practice

***Our ambition is to enable success for all children and inspire a lifelong love of reading." (FFT - 2022)***



Success for All



Success for All  
Phonics

## Parent Portal



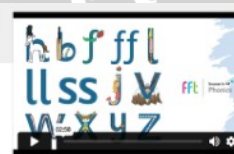
We hope you find all the resources on our growing Parent Portal useful to support your child's phonics and early reading.

The materials are designed to support the learning your child is experiencing in school. At the moment the resources include all of the Shared Readers we have available so you can reread and enjoy the books together after they have been read in school. Please see the [Tips for Home Reading](#) section for advice on how to read these books with your child at home.

***\*More information coming soon***



FFT Success for All Phonics ...  
FFT Education  
This video includes pronunciation guidance for the following GPCs: sat pin md g oc k a u r



FFT Success for All Phonics ...  
FFT Education  
This video includes pronunciation guidance for the following GPCs: h b f f l l s s j v w x u z



FFT Success for All Phonics ...  
FFT Education  
This video includes pronunciation guidance for the following GPCs: zz qu ch sh th ng ai ee igh oa o...



FFT Success for All Phonics ...  
FFT Education  
This video includes pronunciation guidance for the following GPCs: or ar ow oi ear air ure er



FFT Success for All Phonics ...  
FFT Education  
This video includes pronunciation guidance for the following GPCs: ay ou ie ea oy ir ue aw ew



FFT Success for All Phonics ...  
FFT Education  
This video includes pronunciation guidance for the following GPCs: a e o e i e o e u e



<https://www.st-edmunds.notts.sch.uk/phonics/>





## Attendance:

Face-to-face education is important in helping pupils to fulfil their potential.

During school time, we believe pupils should be in class with their teachers and peers and enjoying all the benefits that brings.

Parents or carers of a child(ren), have a legal responsibility to ensure their child receives a suitable education. This is usually achieved through regular attendance at school.

For more information: [DfE: Importance of attendance](#)

School  
Target:

96%

## School vs National Data:





## Other News: Parent Governor Vacancies

Information has recently been shared about upcoming Parent Governor vacancies here at St. Edmund's CofE Primary and Nursery School.

Becoming a Parent Governor is a wonderful way to make a real difference in our school community — helping to shape the vision, values, and future direction of St. Eddies. Governors work as part of a team to support and challenge the school's leadership, ensuring that every child flourishes academically, socially, and spiritually.

Full details of the nomination process and how to apply will be shared early next week via our school office.

If you're passionate about education and want to help St. Eddies continue to thrive, this could be a fantastic opportunity to get involved.

✨ "Learning through faith, we dream, believe and achieve." ✨



## Useful Resources:

**NHS**

Nottinghamshire Healthcare  
NHS Foundation Trust

**BBC**

**TINY HAPPY  
PEOPLE**

**NSPCC**



**Nottinghamshire  
County Council**



**THE CHURCH  
OF ENGLAND**

Diocese of Southwell & Nottingham

🎉 Over 100,000 views in just 28 days! 🎉

A huge thank you to our wonderful St. Eddies community for helping us grow by 55% this month!

Every like, comment, and share helps our pupils — and our community — to flourish together on a **journey to discover life in all its fullness (John 10:10)**. ❤️

Last 28 days ▼

16 Sep - 13 Oct

**100,038 Views** ⓘ

↑55% from previous 28 days





## #St.EdSUPPORT:

If you need to chat  
this Time To Talk Day



0300 102 1234  
Open 9am-6pm weekdays

SAMARITANS

116 123  
Always open



0800 58 58 58  
Open 5pm - midnight

If you're in Wales:



0800 132 737  
Always open

If you're under 25:



Text THEMIX  
to 85258  
Always open

Share and save this post



Mind  
6 Feb •

It can be uncomfortable to open up and share how we're really feeling. But talking openly and honestly can be the first step towards better mental health for everyone.

Time to Talk Day is the nation's biggest mental health conversation. Each year, it helps friends, families, communities and workplaces to have millions of conversations about mental health across the UK.

This Time to Talk Day, we're asking people to get comfortable and start talking about mental health. So if you find yourself fancying a brew, perhaps talk it through. [Co-op Rethink Mental Illness](#) [#TimeToTalk](#)

**NottAlone**  
It's OK not to be OK



How  
are you,  
really?

Local mental health  
advice and help  
for young people  
in Nottingham and  
Nottinghamshire, with  
support for parents too.

[nottalone.org.uk](https://nottalone.org.uk)  
[#NottAlone](#)

### #STED-SUPPORT

Home > Key Information > #STED-SUPPORT

At St. Edmund's CofE Primary and Nursery School, we prioritise the well-being of our students and their families.

Introducing #StEdmundsSUPPORT, our dedicated team is committed to providing excellent support for both children and parents/carers alike.

We uphold our Sixness Values of **compassion, perseverance, responsibility, respect, truth and truth, and justice and forgiveness** in all that we do.



We understand that parenting can sometimes be challenging, and we're here to help. Our experienced staff are always available to address your questions, concerns, and provide guidance whenever you need it. While face-to-face meetings may not always be possible, we have curated a range of valuable resources and links on this page to support you.

Whether you're seeking advice, information, or access to external agencies, our #StEdmundsSUPPORT resources aim to empower you with the knowledge and tools to navigate any situation. We believe that by fostering a strong partnership with parents and carers, we can help our children thrive and reach their full potential.

Let us provide you with even better support at St. Edmund's CofE Primary and Nursery School.

#### Who's Who?



Mrs Hird-Shaw: Senior Mental Health Lead



Mrs Walker: ELSA Practitioner

#### #StEdSUPPORT Resources:



Nottinghamshire  
County Council

Nottinghamshire  
**Family Hub Network**



Helping families get the right support at the right time



<https://www.st-edmunds.notts.sch.uk/sted-support/>



**doodlelearning**  
discover possible



## Congratulations to our Top Doodlers...



75267 questions answered

Average question time: 17 seconds

Hours of practice\*: 355

\*The total time spent by students at St Edmund's CofE (C) Primary School on their personal work programs over the last twelve months, excluding time spent on games or other features in the app.

71789 questions set by Proxima\*

3478 questions set by staff at St Edmund's CofE (C) Primary School\*\*

\*The in-built algorithm Proxima™ powers each individual's work program, setting questions exactly tailored to their level, strengths and weaknesses.



**doodle**

Discover thousands of questions...  
to suit all types of learner!

**doodle**

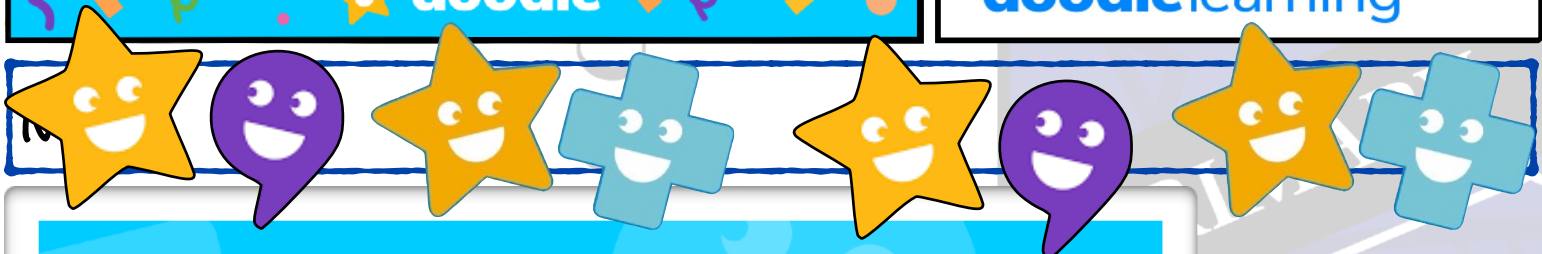
## Promotes independent learning!

By setting work at just the right level, Doodle lets all children work **without supervision**, helping to boost their confidence and resilience.

**doodle**



**doodlelearning**



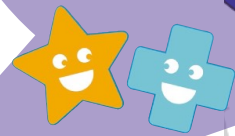
“Dear creator of doodle learning,  
I just wanted to say **I love your app!**  
Now my mum doesn't need to  
tell me to do maths.”

— Child user

**doodle**



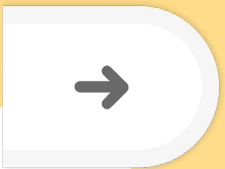




## Get started with Doodle



1. Scan the QR code to download the free apps and get logged in using the login information provided by your child's class teacher



2. Once logged in, create a parent account to track your child's progress. Press the arrow and select Settings > Parent details.

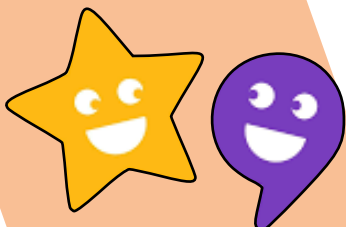


3. Use the DoodleConnect app or visit [parents.doodlelearning.com](https://parents.doodlelearning.com) regularly to keep up to date with your child's progress.



Click the green chat icon on the website to speak to our Parent Support Team or visit [help.doodlelearning.com](https://help.doodlelearning.com) for help articles.

**doodlelearning**  
By Discovery Education





# St. Edmund's Church:

A fantastically friendly church in the heart of  
Mansfield Woodhouse

12 Fri 20 Dec

## St. Ed's Church Mansfield Woodhouse



### St. Ed's Church Mansfield Woodhouse

70 likes • 119 followers

St. Edmund's, a fantastically friendly Church in the heart of Mansfield Woodhouse.

Following

Send Email

Posts About Photos Mentions

#### Details

Page · Church

Church Street

+44 1623 629665

office@stedschurch.org.uk

st.edschurch\_mw



## Our vision here at St. Ed's

Our Vision at St. Ed's is to bring God's heart to the heart of the community. We don't believe that we take God out into the community, rather that we go out in to the community and join in with what he is already doing

St. Ed's has been embedded in the heart of the community for over 700 years. Today we engage with our community in lots of different ways; providing affordable clothes and household items through our charity shop, The Partnership, which donates profits to local, national and international charities. We provide great, affordable food and a welcoming warm space in our Stable Centre Café. We host and run the Trussell Trust Sherwood Forest Foodbank to meet the needs of those who have fallen on harder times in our community. We seek to support local schools and families. And we seek to support all who come to us to mark life's events from cradle to grave. Whether you are rejoicing, grieving, anxious or simply trying to take one day at a time we welcome you

Through all of these things we bring the love of Jesus to the community and have opportunities for people to find out more about the Christian faith through attending one of our Alpha Courses

St. Ed's is part of the Diocese of Southwell and Nottingham. As we grow forward into the future we will be following the Diocesan vision of 'Growing Disciples of Christ with Compassion, Confidence and Courage'



### Opening Times

Sunday	Monday	Tuesday	Wednesday	Thursday	Friday	Saturday
Closed	1:30pm-4:00pm	Closed	10:30am-12:30pm	1:30pm-3:45pm	Closed	Closed
	St. Ed's Turner Hall		St. Peter's Mansfield	St. Ed's Turner Hall		

## Events:

May 2025							Today
Sun	Mon	Tue	Wed	Thu	Fri	Sat	
27 All Age Ser... Evening Pr...	28	29 Little tEds ... + 3	30 Zoom Pra...	1 Small Gro...	2 Flea Market	3	
4 Holy Com... Alight	5	6 Little tEds ... + 3	7 Zoom Pra... Mothers U...	8 Small Gro...	9 Flea Market	10	
11 Morning P... Alight	12	13 Little tEds ... + 3	14 Zoom Pra... Cameo - L...	15 Small Gro...	16 Flea Market	17	
18 Joint All A... APCM - fol...	19	20 Little tEds ... + 4	21 Zoom Pra...	22 Small Gro...	23 Flea Market	24	
25 Holy Com... + 2	26	27 Little tEds ... + 3	28 Zoom Pra... Cameo Gr...	29 Small Gro...	30 Flea Market	31	



<https://www.stedschurch.org.uk/what-s-on>



[https://  
www.facebook.com/  
profile.php?  
id=61553968214035](https://www.facebook.com/profile.php?id=61553968214035)



# Missed Letters:




<https://www.st-edmunds.notts.sch.uk/letters-home/>




## LETTERS HOME

Home > Key Information > Letters home

### World Book Day 2025

 World Book Day 2025!.pdf

### Y5 Viking Trip Mansfield Museum

 Y5 Mansfield Museum Trip - 27th Feb 2025.pdf


### Y1 Flying High Wow Day

 Flying High WOW Day - Year 1.pdf

### Valentines Disco 2025


 Valentines Disco 2025.pdf

### Remembering Geoff Stafford


 Remembering Geoff Stafford.pdf

Please join us in remembering the life and legacy of Geoff Stafford, a beloved Governor of St. Edmund's, who dedicated many years to our school. Geoff embodied our 'Sixness' values and will be deeply missed.

### F2, Y1 and Y2 Reading book changes - January 2025

 F2 Y1 Y2 Reading Book changes Parent letter.pdf

### Change in PE Days - January 2025

 PE day changes - January 2025.pdf

### Doodle Platform Launch Letter

## Staying Informed: Accessing Important School Letters

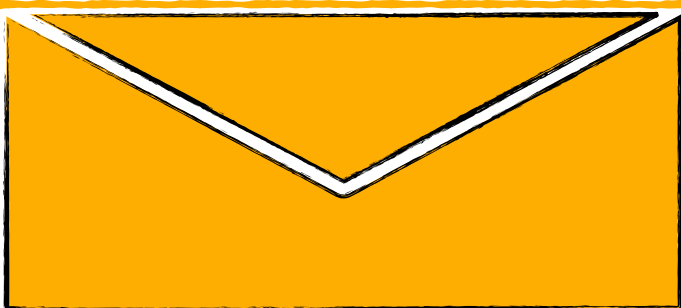
We understand that keeping track of all school communications can be challenging. To ensure you don't miss any important information, we have created a dedicated page on our school website where we upload all letters sent home to families.

This page serves as a central hub for all official school correspondence, including:

- **Important notices:** Upcoming events, school closures, and other critical information.
- **Curriculum updates:** Information about your child's learning, including termly newsletters and subject overviews.
- **Trip information:** Details about upcoming school trips, including consent forms and payment information.
- **Homework information:** Reminders and important deadlines for upcoming homework assignments.
- **PTA letters and information:** Important updates from the Parent Teacher Association, including details about upcoming events, fundraising activities, and volunteer opportunities.
- **Policy documents:** Easy access to important school policies, such as our behaviour policy and uniform guidelines.

We encourage you to visit this page regularly to stay informed about all aspects of school life.

**Remember:** This page complements our other communication channels, including the Arbor app and our Facebook page.





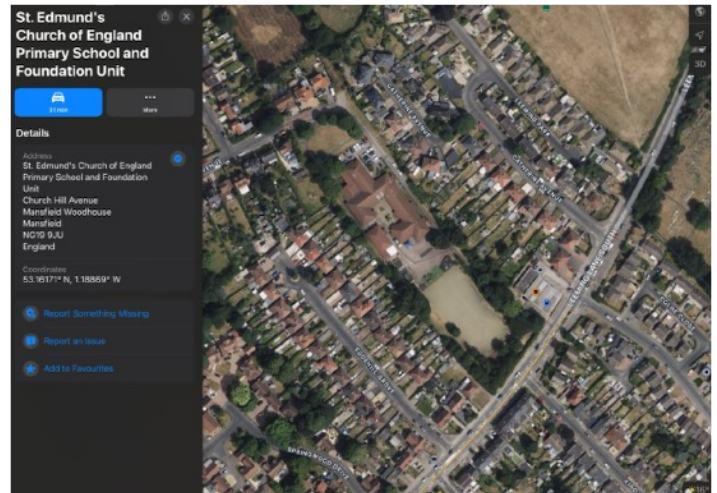
## Contact Details:

We believe that our school offers a unique and nurturing environment where children can thrive academically, socially, and spiritually. Our focus on excellence, innovation, and pastoral care ensures that our pupils are well-prepared for their 'flourishing' future success.

#BeaconofExcellence #St.Eddies #SixcessValues #community

## Address:

St. Edmund's CofE Primary & Nursery School  
Church Hill Avenue  
Mansfield Woodhouse  
Nottinghamshire  
NG19 9JU



[www.st-Edmunds.notts.sch.uk](http://www.st-Edmunds.notts.sch.uk)



01623 646624



[office@st-edmunds.notts.sch.uk](mailto:office@st-edmunds.notts.sch.uk)



Follow us... (If you like) 👍



Arbor

Like

Share

Follow

**\*Please make sure that your contact details are up-to-date on arbor**