



Issue:

#4

Term:

Spring

Date:

April 2025

Diary Dates:

| Monday | Tuesday | Wednesday | Thursday | Friday | Saturday | Sunday |
|-------------------|---------------------|--------------------|-------------------|------------------|----------|--------|
| | | | | 1 Good Friday | 2 | 3 |
| 4 | 5 | 6 Easter Monday | 7 Tuesday | 8 Wednesday | 9 | 10 |
| 11 Good Friday | 12 Easter Monday | 13 Tuesday | 14 Wednesday | 15 Thursday | 16 | 17 |
| 18 | 19 Good Friday | 20 | 21 | 22 | 23 | 24 |
| 25 Good Friday | 26 | 27 | 28 Good Friday | 29 | 30 | |

Found here: [School Calendar](#)

Key dates can be found on the
school website calendar.

“
**Nothing is
impossible, the
word itself says
'I'm possible'!**”

AUDREY HEPBURN

Parents

Headteacher Message:

Dear Parents and Carers,

As we draw to a close on a vibrant Spring 2, and eagerly anticipate the arrival of Summer 1, I want to express my sincere gratitude for your continued support and partnership. This half-term has been another period of remarkable growth and achievement for our children at St. Edmund's CofE Primary and Nursery School.

I've been truly inspired by the creativity and dedication displayed in the wonderful homework projects that have come in. It's clear that our children are engaging deeply with their learning, both in and out of the classroom. Furthermore, it's fantastic to see so many of our pupils excelling on the Doodle Learning platforms, demonstrating their commitment to mastering key skills. And of course, our "Wow" days have been a true celebration of learning, filled with joy and excitement.

Building on the strong foundations we established earlier in the year, particularly our focus on reading, we've continued to see our children flourish. The enthusiasm for our new phonics scheme remains high, and the progress our young readers are making is truly commendable. We are committed to nurturing a lifelong love of reading, and we are confident that the skills they develop here will serve them well in all aspects of their education.

As we look forward to Summer 1, we are excited to announce a calendar filled with enriching events and opportunities. We have many exciting things planned for the coming term, and we look forward to sharing these with you in the coming weeks. We are confident that this term will provide many more opportunities for our children to thrive.

Finally, I wish you all a peaceful and joyful Easter break. May it be a time for rest, reflection, and quality time with loved ones. We look forward to welcoming you back refreshed and ready for another exciting term.

Thank you once again for being such an integral part of the St. Edmund's family.

Warmly,

Mr Anthony Bandy-Webb





Vision, Aims & Values:

At St. Edmund's C of E Primary and Nursery School, we aspire to be a beacon of excellence, a vibrant and welcoming Christian community where all children flourish spiritually, academically, socially, and emotionally. Inspired by the teachings of the Bible, we foster a culture of curiosity, creativity, compassion, and service. Here, every child is known, valued, and empowered to become a confident, responsible, and thriving individual who makes a positive impact on the world.

By educating for life in all its fullness, we are preparing our students for a bright future. We believe that our pupils will be confident, resilient, and well-rounded individuals who are ready to make a positive impact on the world.

A #StEDDIE is a proud member of our school community who embodies our Christian values in all aspects of their life.

'Sixcess' Values:

Our 'Sixcess' Values underpin everything we do at St. Edmund's. They are the guiding principles for our relationships, learning, and actions.

Respect: We treat everyone with dignity and kindness, valuing diversity and celebrating individuality.

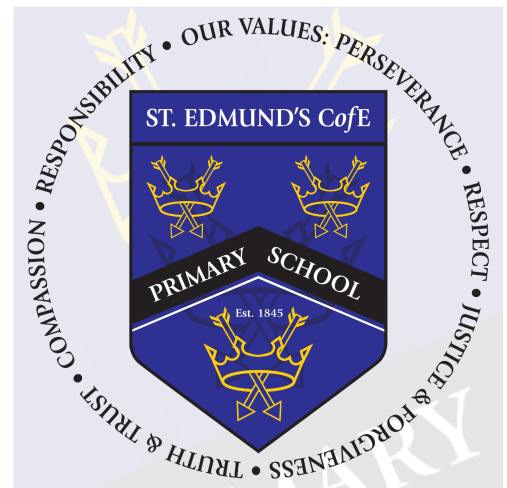
Responsibility: We are accountable for our actions and choices, demonstrating reliability and self-discipline.

Perseverance: We approach challenges with determination and resilience, learning from setbacks and striving for excellence.

Truth and Trust: We build strong relationships based on honesty, integrity, and reliability.

Justice and Forgiveness: We promote fairness, equality, and compassion, seeking to reconcile and restore relationships.

Compassion: We show empathy and care for others, demonstrating kindness and generosity of spirit.



Together, inspired by Christian values, we embark on a journey to discover life in all its fullness, equipping our children to flourish and leave their positive mark on the world.

School Prayer:

Lord,

Bless this day and all it brings.

Thank you for our school; Make it a place of laughter and friendship, let our school be a place where we can learn and share our hopes and dreams.

Bless our lives, that we may grow in your love. Help us show forgiveness when people make mistakes - even when we have been hurt.

Bless our work, that we use our gifts and talents wisely. Encourage us to persevere when things are challenging.

Bless our hearts and teach us to care for one another.

Amen.

The school's prayer aligns closely with the Church of England's vision for a deeply Christian education system. By fostering a culture of respect, responsibility, and perseverance, the school is actively contributing to the development of well-rounded individuals.

Our new school prayer embodies the spirit of John 10:10, which promises a life of abundance and fulfilment. By nurturing a flourishing culture, we are creating an environment where our pupils can succeed and reach their full potential.

We are delighted to introduce our new school prayer, which has been thoughtfully chosen by our staff and children. This prayer reflects our commitment to fostering a positive and nurturing learning environment where our pupils can thrive.

The prayer incorporates our school's "Sixcess" values: respect, responsibility, perseverance, truth and trust, compassion, justice, and forgiveness. These values are fundamental to our school community and guide our daily interactions.

We hope that this prayer will inspire our pupils to develop a sense of belonging, compassion, and resilience. It is our belief that by embracing these values, we can create a school where everyone feels safe, supported, and valued.

School Expectations:



Our School Expectations:

Our behaviour policy is underpinned by our Christian values of **respect**, **truth and trust**, **compassion**, **responsibility**, **justice and forgiveness**, and **perseverance**. These values are integral to creating a positive and nurturing learning environment where all pupils feel safe, valued, and empowered to reach their full potential.

Parents and carers:

Parents and carers, where possible, should:

- * Support their child in adhering to the school's behaviour policy
- * Inform the school of any changes in circumstances that may affect their child's behaviour
- * Discuss any behavioural concerns with the class teacher promptly
- * Take part in any pastoral work following misbehaviour (for example, attending reviews of specific behaviour interventions)
- * Raise any concerns about the management of behaviour with the school directly, while continuing to work in partnership with the school
- * Take part in the life of the school and its culture

5 Pillars of Pivotal Practice:



The school will endeavour to build a positive relationship with parents and carers by keeping them informed about developments in their child's behaviour and the school's policy, and working in collaboration with them to tackle behavioural issues.

Ready to learn;

Respectful of themselves and others;

Responsible in school

Drawing upon the Church of England's values and aims for flourishing schools, we believe in:

- Educating for Dignity and Respect: Promoting the inherent dignity and value of every person, created in the image of God. We celebrate diversity and encourage children to treat everyone with kindness, compassion, and respect.



School Uniform:



| Our children wear: | PE Kit |
|---|--|
| <ul style="list-style-type: none"> • Polo shirts, shirts or blouses in white or blue • Sweatshirts, cardigans or jumpers in royal blue • Long trousers or shorts in grey or black • Knee-length skirts in grey or black • Pinafore dresses in blue • Socks and/or tights in white, grey or black • Black shoes or plain black/grey trainers with no logos (sensible boots may also be worn in bad weather) • All shoes must have a low heel | <ul style="list-style-type: none"> • Plain white or blue t-shirt, or a t-shirt with our school logo • Shorts/tracksuit bottoms in blue or black • Sensible trainers for outdoor use or plimsolls • Tracksuit top or jumper in blue or black <p><u>Jewellery</u></p> <p>Jewellery is not to be worn by pupils in school.</p> |
| <p>School uniform does not have to have our logo on it. You are very welcome to purchase non-branded uniform from a supermarket or other supplier, as long as the colours match ours.</p> | <p>On the day that your child has PE, they should come to school in their PE kit instead of their usual school uniform. This saves time with getting changed in school and also avoids items of clothing getting lost.</p> |

For branded school uniform, check out this website: myclothing.com



News 1: Unbeaten!



A fantastic 10-0 win for our team. Everyone put a 'shift in', winning the ball back at crucial times in the first half, when the score was tight.

With Mason and Jacob chipping in with their usual goals and Jake scoring a screamer from the edge of the box, we pulled away in the second half.

Our passing was particularly pleasing to watch (reminiscent of many a Brazilian team!)

Scorers were:

Mason 5

Jacob 4

Jake 1

Player of the match was Lincoln for keeping us in the game early on with safe hands and keeping a clean sheet.

What pleased us the most was our teams compassion and sportsmanship towards the other team!

Well done boys!

News 2: Potential School Library Design:

We're excited to share some potential designs for a brand new school library!

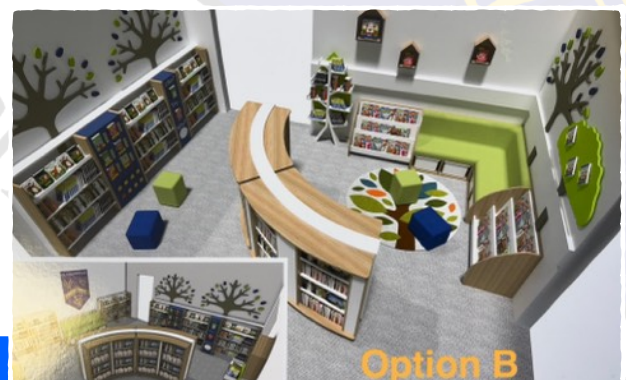
Reading is so important, and a great library is the perfect place to get our #StEDDIES even more excited about books!

These are just some initial ideas, with the cost in the region of £12k.

As most of you are aware, our financial situation is challenging and we rely on awesome gestures from local businesses and our wonderful community.

If you know someone/business who would be interested in our library development, please let us know...we would love to collaborate with them!

Which one is your favourite? Option A or Option B?



News: Our Litter Initiative:

We are constantly trying to improve the pathway with runs parallel to our school - this pathway actually belongs to the school and therefore have to maintain it.

Our #EcoTeam have been busy designing posters encouraging our community to reduce their litter and have had their litter signs made.

This important piece of work has been funded by local Councillors (Callaghan and Beachus) out of their own personal finances (not ward allowances).

A big thank you to Lee Chapman from Mansfield Woodhouse Community Development Group for supporting with funding.

We hope this initiative will go along way in helping support the school in maintaining the public footpath.

Nottinghamshire County Council Diocese of Southwell and Nottingham Mansfield Woodhouse Community Development Group (MWCDG)



News: Deputy Head Incoming:

As you know, Mrs. Pembury left us in December, and we extend our sincere thanks to Mrs. Hird-Shaw for stepping up and acting as Deputy Headteacher since then. She has done a truly fantastic job, and her dedication to St. Edmund's has been invaluable.

We have some incredibly exciting news to share! Following a rigorous interview process, we are delighted to announce that we have appointed a new Deputy Headteacher! Even more exciting is that this new role will also incorporate the responsibility of SENCo. We are absolutely thrilled to welcome them to our team and are confident that they will be a wonderful asset to our school community. We will, of course, share more information about our new Deputy Headteacher as we get closer to their start date.

However, as our new Deputy Headteacher will not be joining us until September 2025, we are incredibly grateful that Mrs. Hird-Shaw has graciously accepted our request to continue as Acting Deputy Headteacher until the end of this academic year. This will ensure a smooth transition and provide continuity for our children, staff, and families. Thank you, Mrs. Hird-Shaw, for your continued commitment and leadership!

COMING SOON

News: Book Trust Research:

Reading supports children to develop better mental wellbeing, social skills and strong relationships

They feel more secure and develop deep bonds with parents/carers

- As a bonding activity, shared reading in their early years supports the development of a child's attachment (how safe, secure and trusting they feel around their parent or carer). Attachment is essential to a child's future happiness, social competence, and ability to form meaningful connections.² The availability of their parent or carer¹⁰ during shared reading contributes to a child's sense of safety.¹¹

- Shared reading creates opportunities for joint attention and emotional closeness between a child and their parent or carer. Shared reading increases parental warmth and reduces parental stress¹², enabling them to provide the sensitive and nurturing interactions their children need to thrive.^{13,14}

Reading supports children to meet speech and language milestones and do better at school

They have better brain development, attention, and cognitive ability

- Children's brains experience the most growth in their first 5 years, when their brains are most responsive to their environment.²⁵ Stimulation from reading books, playing, talking, and singing with a parent or carer serves an important neurological function, enhancing children's cognitive, physical, social, and emotional growth.²⁶
- Shared reading among children from low-income backgrounds enhances healthy brain activation in language, attention, memory, self-control, and adjustment.²⁷
- Reading for pleasure has long-lasting positive benefits on brain development. Younger children who read more score better on cognitive tests.²⁸



[https://
www.booktrust.org.uk/
globalassets/resources/
research/booktrusts-
benefits-of-reading-
june-2024.pdf](https://www.booktrust.org.uk/globalassets/resources/research/booktrusts-benefits-of-reading-june-2024.pdf)

News: Jungle Jo!:

Jungle Jo came to visit F1 (Nursery) and F2 (Reception)! 🐸🐍🦋🐛

The children were all so brave and everyone touched at least one of the animals (including Mrs Land who even conquered her fear of spiders! 🕷️)

Jungle Jo, on her social media posted:

"Just had my Animal welfare checks for my animal Exhibitors Licence. I have passed with flying colours as usual and they will be giving me the maximum time of 3 years again before my next checks..

Happy me and happy animals.. 😊"





News: School Swimming:

School swimming is one of the only areas of learning we provide to our pupils that can actually save a life! It's vitally important.

So when we were offered by Notts School Swimming to come in and deliver some CPR workshops, we literally snapped their hands off!

Here are some pictures of Year5 during their workshops.

Nottinghamshire County Council Diocese of Southwell and Nottingham St John Ambulance

#noceilingapproach #sixcessvalues
#beaconofexcellence #firstaid #savelives
#CPRSavesLives #year5



News: Bun in the Oven:



We are absolutely thrilled to share some wonderful news with our school community! Our very own Olivia Morgan has announced that she is expecting a baby! Everyone at St. Edmund's is overjoyed for Olivia and her family. We wish her all the very best as she embarks on this exciting new chapter. We know she will make a fantastic parent, and we look forward to sharing more updates with you in the coming months. Congratulations, Olivia!

News: Easter Service:

Our school community gathered at St. Edmund's Church for a beautiful and reflective Easter Service. As we came together, we were reminded of our guiding principle, rooted in John 10:10: "to discover life in all its fullness." This message, so central to the Easter story, resonated deeply with us all.

Through readings, songs, and thoughtful reflections, our children helped us to journey through the narrative of Easter, from darkness to the radiant light of renewal. We were reminded that Easter is not merely a historical event, but a powerful symbol of hope and new beginnings, mirroring the awakening of spring.

Despite a few minor technical hiccups, the spirit of the service shone brightly. Our children, with their heartfelt contributions, embodied the essence of Easter, filling the church with joy and a sense of shared hope. Their participation served as a beautiful reminder of the boundless potential that resides within each of us.

We extend our sincere gratitude to everyone who joined us for this special service, and we thank our children for their moving contributions. May the message of Easter, and the promise of new life, stay with us all.



News: Easter Bonnet Parade Extravaganza!



Our annual Easter Bonnet Parade was a resounding success, filled with creativity, laughter, and a touch of springtime magic! The school Courtyard was transformed into a vibrant catwalk, where our talented pupils showcased their incredible bonnet and T-shirt designs. The standard of entries was exceptionally high, making the judges' task of selecting winners from each class a truly challenging one. Each and every child poured their heart into their creations, and the resulting parade was a testament to their imagination and hard work. The excitement was palpable as our young designers took their turn in the spotlight, and the cheers from the audience were a wonderful celebration of their efforts. Congratulations to all our participants, and a special round of applause for our class winners, who were delighted with their well-deserved Easter egg prizes. Thank you to everyone who supported this joyous event; we're already looking forward to next year's parade...

News: Phonics

We're excited to announce that we've invested in a new systematic phonics scheme, FFT Phonics For All! This comprehensive program is designed to help our pupils develop strong phonics skills and become confident readers.

In addition, the scheme includes aligned books that reinforce classroom learning and provide opportunities for independent reading practice

Our ambition is to enable success for all children and inspire a lifelong love of reading." (FFT - 2022)



Success for All



Success for All
Phonics

Parent Portal



We hope you find all the resources on our growing Parent Portal useful to support your child's phonics and early reading.

The materials are designed to support the learning your child is experiencing in school. At the moment the resources include all of the Shared Readers we have available so you can reread and enjoy the books together after they have been read in school. Please see the [Tips for Home Reading](#) section for advice on how to read these books with your child at home.

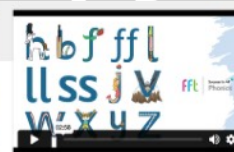
****More information coming soon***



FFT Success for All Phonics ...

FFT Education

This video includes pronunciation guidance for the following GPCs: sat pin mdg oc k



FFT Success for All Phonics ...

FFT Education

This video includes pronunciation guidance for the following GPCs: hbf ffl llss jv wxyz



FFT Success for All Phonics ...

FFT Education

This video includes pronunciation guidance for the following GPCs: zz qu ch sh th ng



FFT Success for All Phonics ...

FFT Education

This video includes pronunciation guidance for the following GPCs: or ur ow oi ear air ure er



FFT Success for All Phonics ...

FFT Education

This video includes pronunciation guidance for the following GPCs: gg ou ie ea ir aw



FFT Success for All Phonics ...

FFT Education

This video includes pronunciation guidance for the following GPCs: a e e-e i e



<https://www.st-edmunds.notts.sch.uk/phonics/>



Attendance:

Face-to-face education is important in helping pupils to fulfil their potential.

During school time, we believe pupils should be in class with their teachers and peers and enjoying all the benefits that brings.

Parents or carers of a child(ren), have a legal responsibility to ensure their child receives a suitable education. This is usually achieved through regular attendance at school.

For more information: [DfE: Importance of attendance](#)

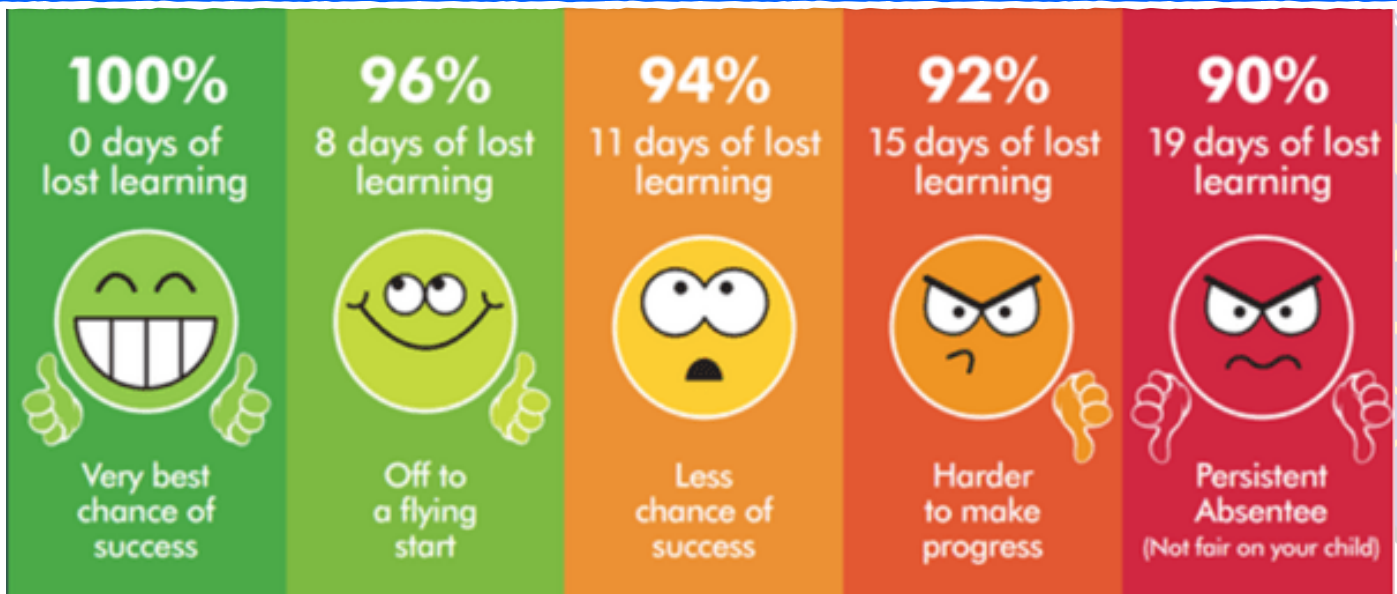
**School
Target:**

96%

School vs National Data:



We're delighted to share that our school attendance from September 9th to March 21st has achieved an impressive +0.6% score compared to the national average (Year to Date (YTD)). This is a good accomplishment that reflects the commitment of our pupils, staff, and parents to ensuring regular attendance. However, this is still slightly below our school target. Please keep it up, if we can... 🙌





Other News: British Science Week:

Year 2 completed a dissolving science experiment for 'World Science Week'. We tested 'sugar and salt' to see which would dissolve the quickest.

Year 3 extracted seeds from their chosen variety of tomato and planted them to find out about selective plant breeding. We're also investigating in science whether cress grows best in peat, sandy or clay soil. It's been a week filled with planting for us!

Year 5 have been working hard in science to develop a pulley that worked as part of British Science Week.

Year 6 worked hard during Science week to simulate what would happen to glaciers if the temperature of the earth rose.



Useful Resources:



Nottinghamshire Healthcare
NHS Foundation Trust



TINY HAPPY
PEOPLE

NSPCC

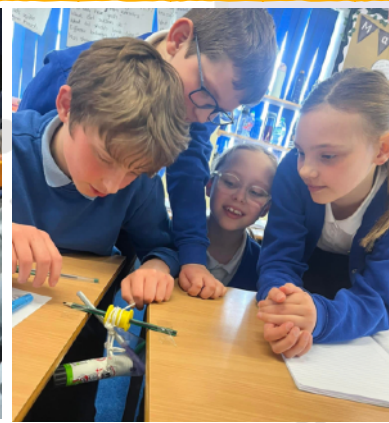


Nottinghamshire
County Council



THE CHURCH
OF ENGLAND

Diocese of Southwell & Nottingham



#St.EdSUPPORT:

If you need to chat
this Time To Talk Day



0300 102 1234
Open 9am-6pm weekdays

SAMARITANS

116 123
Always open



0800 58 58 58
Open 5pm - midnight

If you're in Wales:



0800 132 737
Always open

If you're under 25:



Text THEMIX
to 85258
Always open

Share and save this post



It can be uncomfortable to open up and share how we're really feeling. But talking openly and honestly can be the first step towards better mental health for everyone.

Time to Talk Day is the nation's biggest mental health conversation. Each year, it helps friends, families, communities and workplaces to have millions of conversations about mental health across the UK.

This Time to Talk Day, we're asking people to get comfortable and start talking about mental health. So if you find yourself fancying a brew, perhaps talk it through. Co-op Rethink Mental Illness #TimeToTalk

NottAlone
It's OK not to be OK

Local mental health advice and help for young people in Nottingham and Nottinghamshire, with support for parents too.

How are you, really?

nottalone.org.uk
#NottAlone



#STED-SUPPORT

Home > Key Information > #STED-SUPPORT

At St. Edmund's CofE Primary and Nursery School, we prioritise the well-being of our students and their families.

Introducing #StEdmundsSUPPORT, our dedicated team is committed to providing excellent support for both children and parents/carers alike.

We uphold our Sixness Values of **compassion, perseverance, responsibility, respect, truth and truth, and justice and forgiveness** in all that we do.



We understand that parenting can sometimes be challenging, and we're here to help. Our experienced staff are always available to address your questions, concerns, and provide guidance whenever you need it. While face-to-face meetings may not always be possible, we have curated a range of valuable resources and links on this page to support you.

Whether you're seeking advice, information, or access to external agencies, our #StEdmundsSUPPORT resources aim to empower you with the knowledge and tools to navigate any situation. We believe that by fostering a strong partnership with parents and carers, we can help our children thrive and reach their full potential.

Let us provide you with even better support at St. Edmund's CofE Primary and Nursery School.

Who's Who?



Mrs Hird-Shaw: Senior Mental Health Lead



Mrs Walker: ELSA Practitioner

#StEdSUPPORT Resources:



Nottinghamshire
Family Hub Network



Helping families get the right support at the right time



<https://www.st-edmunds.notts.sch.uk/sted-support/>



doodlelearning
discover possible



Congratulations to our Top Doodlers...



37864 questions answered

Average question time: 17 seconds

Hours of practice*: 179

*The total time spent by students at St Edmund's CofE (C) Primary School on their personal work programs over the last twelve months, excluding time spent on games or other features in the app.

36662 questions set by Proxima*

1202 questions set by staff at St Edmund's CofE (C) Primary School**

*The in-built algorithm Proxima™ powers each individual's work program, setting questions exactly tailored to their level, strengths and weaknesses.



doodle

Discover thousands of questions...
to suit all types of learner!

doodle

Promotes independent learning!

By setting work at just the right level, Doodle lets all children work **without supervision**, helping to boost their confidence and resilience.

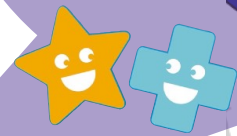
doodle

doodlelearning

“Dear creator of doodle learning,
I just wanted to say **I love your app!**
Now my mum doesn't need to
tell me to do maths.”

— Child user

doodle



Get started with Doodle



1. Scan the QR code to download the free apps and get logged in using the login information provided by your child's class teacher



2. Once logged in, create a parent account to track your child's progress. Press the arrow and select Settings > Parent details.

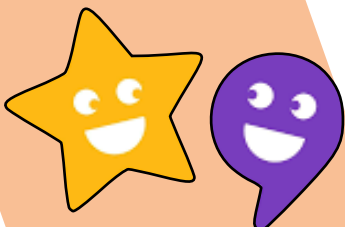


3. Use the DoodleConnect app or visit parents.doodlelearning.com regularly to keep up to date with your child's progress.



Click the green chat icon on the website to speak to our Parent Support Team or visit help.doodlelearning.com for help articles.

doodlelearning
By Discovery Education





St. Edmund's Church:

A fantastically friendly church in the heart of
Mansfield Woodhouse

12 Fri 20 Dec

St. Ed's Church Mansfield Woodhouse



St. Ed's Church Mansfield Woodhouse

70 likes • 119 followers

St. Edmund's, a fantastically friendly Church in the heart of Mansfield Woodhouse.

Following

Send Email

Posts About Photos Mentions

Details

Page · Church

Church Street

+44 1623 629665

office@stedschurch.org.uk

st.edschurch_mw



Our vision here at St. Ed's

Our Vision at St. Ed's is to bring God's heart to the heart of the community. We don't believe that we take God out into the community, rather that we go out in to the community and join in with what he is already doing

St. Ed's has been embedded in the heart of the community for over 700 years. Today we engage with our community in lots of different ways; providing affordable clothes and household items through our charity shop, The Partnership, which donates profits to local, national and international charities. We provide great, affordable food and a welcoming warm space in our Stable Centre Café. We host and run the Trussell Trust Sherwood Forest Foodbank to meet the needs of those who have fallen on harder times in our community. We seek to support local schools and families. And we seek to support all who come to us to mark life's events from cradle to grave. Whether you are rejoicing, grieving, anxious or simply trying to take one day at a time we welcome you

Through all of these things we bring the love of Jesus to the community and have opportunities for people to find out more about the Christian faith through attending one of our Alpha Courses

St. Ed's is part of the Diocese of Southwell and Nottingham. As we grow forward into the future we will be following the Diocesan vision of 'Growing Disciples of Christ with Compassion, Confidence and Courage'



Opening Times

| Sunday | Monday | Tuesday | Wednesday | Thursday | Friday | Saturday |
|--------|----------------------|---------|-----------------------|----------------------|--------|----------|
| Closed | 1:30pm-4:00pm | Closed | 10:30am-12:30pm | 1:30pm-3:45pm | Closed | Closed |
| | St. Ed's Turner Hall | | St. Peter's Mansfield | St. Ed's Turner Hall | | |

Events:

| May 2025 | | | | | | | Today |
|---------------------------------------|-----|------------------------------|-----------------------------------|--------------------|-------------------|-----|-------|
| Sun | Mon | Tue | Wed | Thu | Fri | Sat | |
| 27 All Age Ser... Evening Pr... | 28 | 29 Little tEds ... + 3 | 30 Zoom Pra... | 1 Small Gro... | 2 Flea Market | 3 | |
| 4 Holy Com... Alight | 5 | 6 Little tEds ... + 3 | 7 Zoom Pra... Mothers U... | 8 Small Gro... | 9 Flea Market | 10 | |
| 11 Morning P... Alight | 12 | 13 Little tEds ... + 3 | 14 Zoom Pra... Cameo - L... | 15 Small Gro... | 16 Flea Market | 17 | |
| 18 Joint All A... APCM - fol... | 19 | 20 Little tEds ... + 4 | 21 Zoom Pra... | 22 Small Gro... | 23 Flea Market | 24 | |
| 25 Holy Com... + 2 | 26 | 27 Little tEds ... + 3 | 28 Zoom Pra... Cameo Gr... | 29 Small Gro... | 30 Flea Market | 31 | |



<https://www.stedschurch.org.uk/what-s-on>

[https://
www.facebook.com/
profile.php?
id=61553968214035](https://www.facebook.com/profile.php?id=61553968214035)

Missed Letters:



<https://www.st-edmunds.notts.sch.uk/letters-home/>



LETTERS HOME

Home > Key Information > Letters home

World Book Day 2025

World Book Day 2025!.pdf

Y5 Viking Trip Mansfield Museum

Y5 Mansfield Museum Trip - 27th Feb 2025.pdf

Y1 Flying High Wow Day

Flying High WOW Day - Year 1.pdf

Valentines Disco 2025

Valentines Disco 2025.pdf

Remembering Geoff Stafford

Remembering Geoff Stafford.pdf

Please join us in remembering the life and legacy of Geoff Stafford, a beloved Governor of St. Edmund's, who dedicated many years to our school. Geoff embodied our 'Sixcess' values and will be deeply missed.

F2, Y1 and Y2 Reading book changes - January 2025

F2 Y1 Y2 Reading Book changes Parent letter.pdf

Change in PE Days - January 2025

PE day changes - January 2025.pdf

Doodle Platform Launch Letter

Staying Informed: Accessing Important School Letters

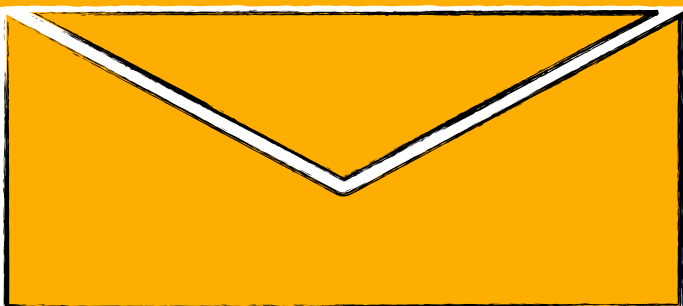
We understand that keeping track of all school communications can be challenging. To ensure you don't miss any important information, we have created a dedicated page on our school website where we upload all letters sent home to families.

This page serves as a central hub for all official school correspondence, including:

- **Important notices:** Upcoming events, school closures, and other critical information.
- **Curriculum updates:** Information about your child's learning, including termly newsletters and subject overviews.
- **Trip information:** Details about upcoming school trips, including consent forms and payment information.
- **Homework information:** Reminders and important deadlines for upcoming homework assignments.
- **PTA letters and information:** Important updates from the Parent Teacher Association, including details about upcoming events, fundraising activities, and volunteer opportunities.
- **Policy documents:** Easy access to important school policies, such as our behaviour policy and uniform guidelines.

We encourage you to visit this page regularly to stay informed about all aspects of school life.

Remember: This page complements our other communication channels, including the Arbor app and our Facebook page.





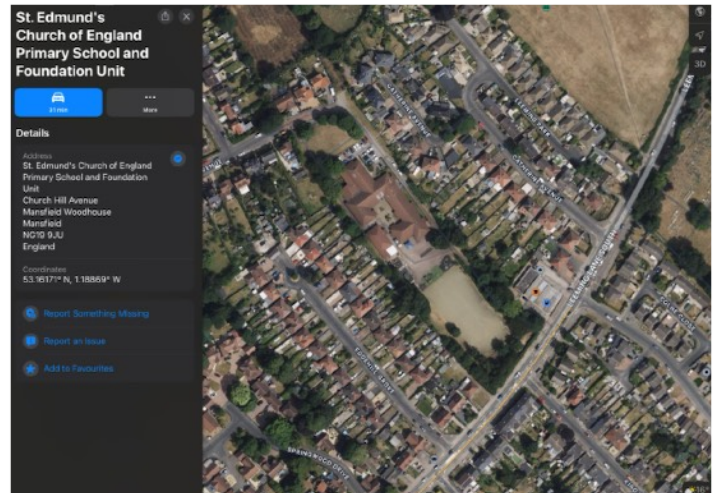
Contact Details:

We believe that our school offers a unique and nurturing environment where children can thrive academically, socially, and spiritually. Our focus on excellence, innovation, and pastoral care ensures that our pupils are well-prepared for their 'flourishing' future success.

#BeaconofExcellence #St.Eddies #SixcessValues #community

Address:

St. Edmund's CofE Primary & Nursery School
Church Hill Avenue
Mansfield Woodhouse
Nottinghamshire
NG19 9JU



www.st-Edmunds.notts.sch.uk



01623 646624



office@st-edmunds.notts.sch.uk



Follow us... (If you like) 👍



Arbor

Like

Share

Follow

***Please make sure that your contact details are up-to-date on arbor**