

## St. Edmund's CofE Primary and Nursery School

### School Timings + Pupil Drop Off and Collection Arrangements – March 2021

The school gates will open at three different times in the morning; 8.30am for FS1 (Nursery), FS2 (Reception) and Year 1, 8.40am for Year 2, Year 3 and Year 4, then 8.45am for Year 5 and Year 6. There is then a one-way system through school.

1. Families will come through the gate by the steps and the car park gate in the morning, then queue up on the path (socially distanced) that leads to the nursery entrance of our courtyard area (**yellow arrows**).
2. Families will then take their children to the cloakroom entrances of their child's class (**blue arrows**).
3. Finally, adults will exit through the playground gate (**red arrows**).

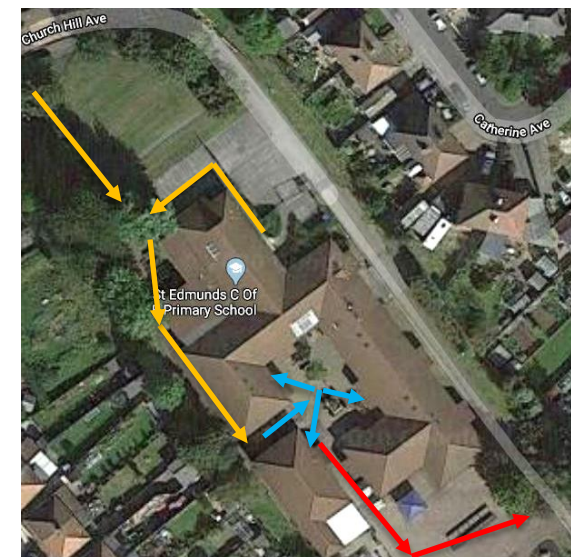
The same will happen at the end of the school day when you come to collect your child.

If you have more than one child in school and they are spread across multiple bubble groups, they should arrive together in the earliest time slot please. They will all be let into school through the cloakroom entrances of the earlier bubble group and the older children will then go to their own classrooms.

At the end of the school day, all children will come out of their own cloakroom doors in their own separate time slots, even if they have siblings in other bubble groups across school.

Parents and carers collecting their children from our FS1 (Nursery) class at the end of the day should not come onto the school grounds before their designated collection slot at 3.20pm please, unless they are collecting a sibling in another class. They should also line up by the green fencing outside the class and not in front of the sheds please. This is so we can ensure some form of social distancing as families make their way past you on their way off the school premises.

Thank you for your support in ensuring we all access our school site in as safe a manner as possible.



FS1 (Nursery)		FS2 + Year 1		Year 2 + Year 3 + Year 4		Year 5 + Year 6	
8.30am	School Begins	8.30am	School Begins	8.40am	School Begins	8.45am	School Begins
		9.00am	Assembly (in class)	9.00am	Assembly (in class)	9.00am	Assembly (in class)
11.30am	Morning session ends	10.10am	Break Time	10.25am	Break Time	10.40am	Break Time
11.30am to 12.20pm	Lunchtime	11.40am to 12.10pm	Lunchtime Play	11.40am to 12.10am	Lunchtime Meal (in the hall)	12.15pm to 12.45pm	Lunchtime Meal (in classrooms)
12.20pm	Afternoon session begins	12.10pm to 12.40pm	Lunchtime Meal (in the hall)	12.10am to 12.40am	Lunchtime Play	12.45pm to 1.15pm	Lunchtime Play
		1.50pm	Break Time	2.00pm	Break Time	As required	Break Time
3.20pm	Afternoon session ends	3.00pm	Home Time	3.10pm	Home Time	3.15pm	Home Time

These arrangements will stay in place until communicated otherwise, when we will return to all main school classes running from 8.45am to 3.15pm, with FS1 (nursery) from 8.40am to 3.20pm.