



PROSPECTUS

A JOURNEY TO DISCOVER LIFE IN ALL
ITS FULLNESS...
(JOHN, 10:10)



Contents:

| | |
|---|----|
| Contents: | 2 |
| 1. School Overview | 4 |
| 1.1 Welcome message | 4 |
| 1.2 Vision, Aims and Values | 5 |
| Our Vision: | 5 |
| Our Aims: | 6 |
| Our 'Sixcess' Values: | 6 |
| Becoming a #St.Eddy: | 7 |
| 1.3 history | 8 |
| 1.4 Key features | 8 |
| 1.5 Floor Plan: | 9 |
| 1.6 The school day: | 10 |
| 2. Academic Excellence | 11 |
| 2.1. Curriculum | 11 |
| 2.2 Teaching & Learning | 12 |
| 2.3 Assessment & Reporting | 13 |
| 2.4 Special Educational Needs (SEN): | 14 |
| 3. Pastoral & Well-being: | 15 |
| 3.1 A Focus on Well-being | 15 |
| 3.2 Positive Behaviour and Discipline | 15 |
| 3.3 Building Strong Relationships | 15 |
| 3.4 "A Happy and Harmonious School" | 15 |
| 3.5 Religious Education & Collective Worship: | 15 |
| 3.6 Equality & Inclusion: | 17 |
| 4. Extra-Curricular Activities: | 18 |
| 4.1 Sports & Clubs: | 18 |



| | |
|-------------------------------------|----|
| 4.3 Trips and Residential | |
| 4.4 The Lime Trees: | |
| 5. Admissions & Enrolment: | 23 |
| 5.1 admissions process | 23 |
| 5.2 Fees and Financial Aid: | 24 |
| 5.3 Attendance: | 24 |
| 6. Facilities | 26 |
| 6.1 classrooms and learning spaces | 26 |
| 6.2 outdoor areas | 27 |
| 6.3 Lunchtimes: | 28 |
| 7. Uniform: | 29 |
| 8. Parent Involvement: | 30 |
| 8.1 PTA | 30 |
| 8.2 communication | 30 |
| 9. Contact information | 31 |
| 9.1 school address | 32 |
| 9.2 website | 32 |
| 9.3 social media: | 32 |
| 10. 'Sixcess' Christian Value Links | 32 |
| 11. Conclusion | 33 |



1. School Overview

1.1 Welcome message

On behalf of our entire school community, we warmly welcome you to St. Edmunds CofE Primary & Nursery School. We are thrilled that you are considering us for your child's education.

At the heart of our school is a strong Christian foundation, where our values of respect, responsibility, perseverance, truth and trust, compassion, justice, and forgiveness shape everything we do. Our aim is to nurture confident, compassionate, and successful individuals who are ready to make a positive impact on the world.

Through our belief in 'Learning through faith, we dream, believe and achieve', we inspire our pupils to reach their full potential. We foster a love of learning and encourage our children to be curious, creative, and critical thinkers. Our dedicated staff are committed to providing a rich and stimulating curriculum that is tailored to the individual needs of each child.

We believe in creating a nurturing and supportive environment where every child feels valued and safe to take risks. Our child-centred approach ensures that we focus on unlocking each child's unique potential and providing them with the opportunities to shine.

We value strong partnerships with parents and carers. We believe that working together, we can create the best possible outcomes for our children. We encourage regular communication and collaboration to ensure that our children receive the support they need both at home and at school.

We warmly invite you to visit our school to experience firsthand our welcoming atmosphere and the opportunities we offer. We believe that St. Edmunds CofE Primary School is a special place where children can thrive and become the exceptional individuals we call 'St. Eddys'.

Yours sincerely,



Mr Anthony Bandy-Webb

Headteacher

Specialist Leader in Education

   @BANDY4EVA @STEDMUNDSCOFE #ST.EDDY #SIXCESS





1.2 Vision, Aims and Values

Our Vision:

At St. Edmund's C of E Primary and Nursery School, we aspire to be a beacon of excellence, a vibrant and welcoming Christian community where all children flourish spiritually, academically, socially, and emotionally. Inspired by the teachings of the Bible, we foster a culture of curiosity, creativity, compassion, and service. Here, every child is known, valued, and empowered to become a confident, responsible, and thriving individual who makes a positive impact on the world.

We believe that every child is unique and valuable. Our school is committed to providing a high-quality education that is both challenging and inspiring. We aim to equip our students with the knowledge, skills, and values they need to succeed in life and to contribute positively to society. By fostering a love of learning and a sense of wonder, we hope to inspire our students to become lifelong learners and active citizens.

By educating for **life in all its fullness**, we are preparing our students for a bright future. We believe that our pupils will be confident, resilient, and well-rounded individuals who are ready to make a positive impact on the world.

Drawing upon the Church of England's values and aims for flourishing schools, we believe in:

- ✳ **Educating for Wisdom, Knowledge & Skills:** Equipping children with a strong foundation in core subjects, alongside the knowledge, skills, and understanding to navigate the complexities of life in the 21st century.
- ✳ **Educating for Hope & Aspiration:** Nurturing a love of learning and a sense of possibility in all children, fostering their aspirations and dreams for the future.
- ✳ **Educating for Community & Living Well Together:** Building a strong sense of community within our school, where everyone feels valued, respected, and supported. We encourage children to develop the skills and understanding necessary to live well together, fostering cooperation, empathy, and social responsibility.
- ✳ **Educating for Dignity & Respect:** Promoting the inherent dignity and value of every person, created in the image of God. We celebrate diversity and encourage children to treat everyone with kindness, compassion, and respect.
- ✳ **Educating for Flourishing Adults:** Equipping children with the skills and knowledge to develop into resilient, adaptable, and well-rounded individuals who can thrive in an ever-changing world









Our Aims:

To provide a stimulating and inclusive education that fosters a lifelong love of learning, rooted in the values of:

- ✳ **Wisdom, Knowledge & Skills:** Delivering a rich and engaging curriculum that equips children with the knowledge, skills, and understanding to flourish academically, personally, and spiritually.
- ✳ **Hope & Aspiration:** Nurturing a love of learning, curiosity, and a sense of possibility in all children. We will provide opportunities for children to explore their talents and interests, and to develop a sense of purpose and ambition for the future.
- ✳ **Community & Living Well Together:** Fostering a strong sense of community within our school, where everyone feels included, valued, and supported. We will provide opportunities for children to develop positive relationships, build social and emotional resilience, and learn to live well together.
- ✳ **Dignity & Respect:** Promoting the inherent dignity and value of every person. We will create a safe and inclusive environment where everyone feels respected, valued, and encouraged to contribute their unique gifts.
- ✳ **Flourishing Adults:** Equipping children with the skills and knowledge to develop into resilient, adaptable, and well-rounded individuals who can thrive in an ever-changing world.

Our 'Sixcess' Values:

Our 'Sixcess' Values underpin everything we do at St. Edmund's. They are the guiding principles for our relationships, learning, and actions.

-  **Respect:** We treat everyone with dignity and kindness, valuing diversity and celebrating individuality.
-  **Responsibility:** We are accountable for our actions and choices, demonstrating reliability and self-discipline.
-  **Perseverance:** We approach challenges with determination and resilience, learning from setbacks and striving for excellence.
-  **Truth and Trust:** We build strong relationships based on honesty, integrity, and reliability.
-  **Justice and Forgiveness:** We promote fairness, equality, and compassion, seeking to reconcile and restore relationships.
-  **Compassion:** We show empathy and care for others, demonstrating kindness and generosity of spirit.



Becoming a #St.Eddy:

A St. Eddy is a proud member of our school community who embodies our Christian values in all aspects of their life.

They are:

- * **Confident, curious learners:** Eager to explore the world around them and discover its wonders.
- * **Kind, caring, and respectful individuals:** Who contribute positively to their school, family, and wider community.
- * **Strong advocates:** Who stand up for what is right and champion those in need.

Our Slogan:

Learning through faith, we dream, believe and achieve.

Together, inspired by Christian values, we embark on a journey to discover life in all its fullness, equipping our children to flourish and leave their positive mark on the world.

#St.Eddies #BeaconofExcellence #SixcessValues

St. Edmund's CofE Primary & Nursery School



1.3 history

This school has the inscription 'National School 1845'. It is built in a [Tudor Revival](#) style of architecture. The National Society for Promoting the Education of the Poor supported the building of National Schools on behalf of the [Anglican](#) Church. National Schools generally had two separate schoolrooms. One for girls and one for boys, with desks placed around the walls. Pupils were taught by monitors in groups of twelve to twenty either standing up or on benches arranged in hollow squares in the centre of the room. These benches could be re-arranged to suit the lesson.

Source: <https://historicengland.org.uk>



St Edmund's CofE Primary and Nursery School

DFES Number: 3004

Area: Mansfield

School type

Phase: Primary and Nursery

Ages: 3 - 11

Contact details

Address:

St Edmund's CofE Primary School ,
Church Hill Avenue,
Mansfield Woodhouse,
MANSFIELD,
NG19 9JU

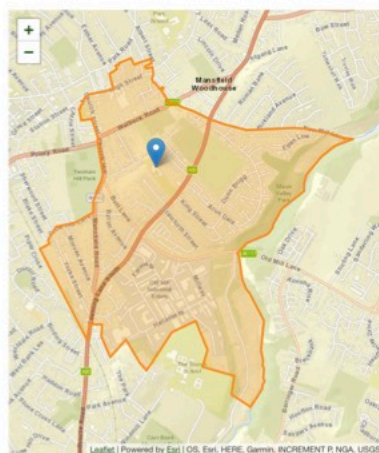
Telephone: 01623 646624

Email: office@st-edmunds.notts.sch.uk

Website: [Visit School Website](#)

Further information

- [OFSTED report for St Edmund's CofE Primary and Nursery School](#)
- [View school meal menu](#)

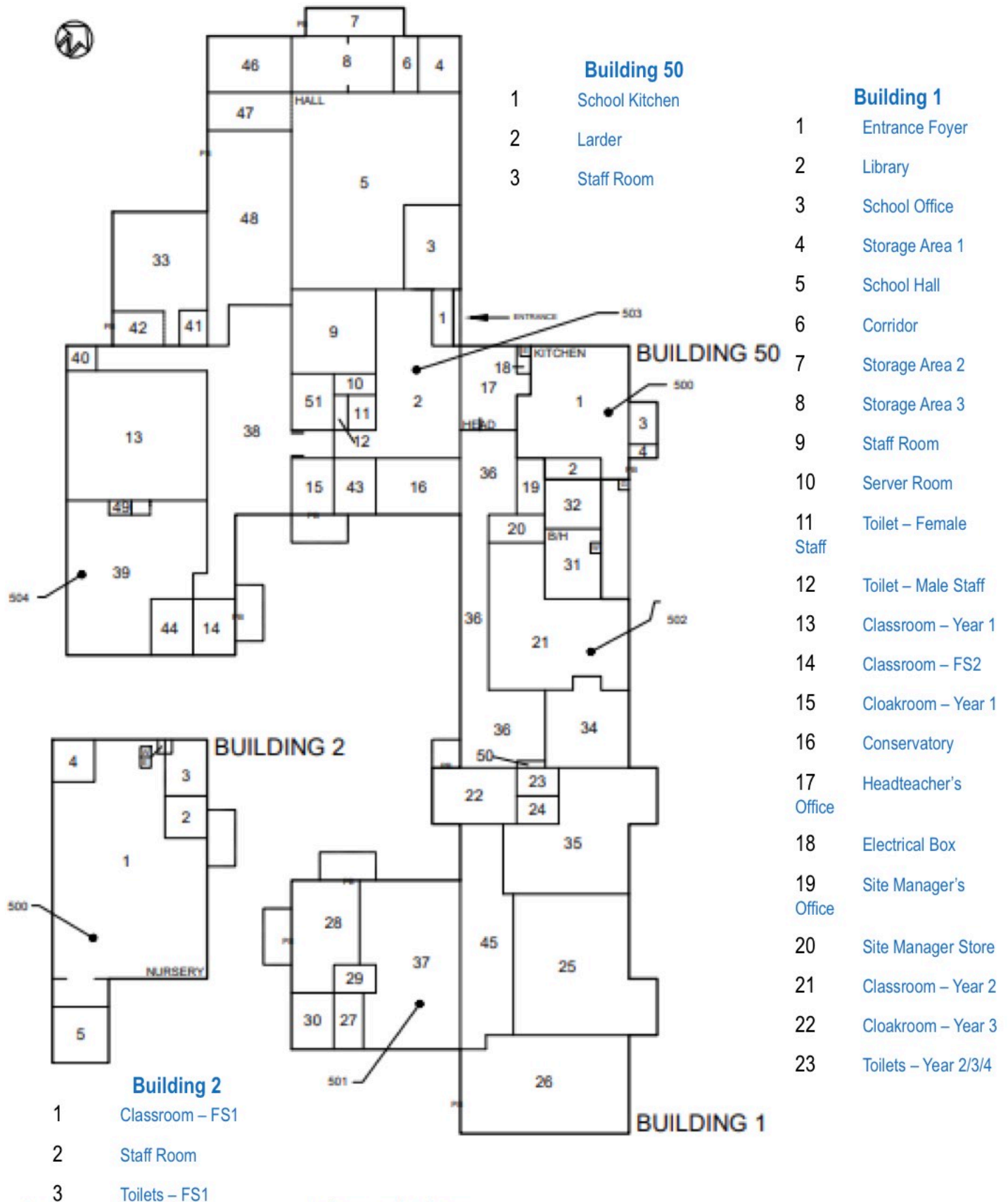


1.4 Key features

<https://www.nottinghamshire.gov.uk/search-for-a-school#/details/3004>



1.5 Floor Plan:





1.6 The school day:

The school day runs from 8.45am to 3.15pm.

The school gates open at **8:30 AM**. This will allow parents and carers to arrive at school with plenty of time to drop off their children and enjoy a 'leisurely' morning.

Please note that while the gates will open at 8:30 AM, **classroom doors will remain closed until 8:45 AM**. This will give parents and carers the opportunity to chat with other parents in the courtyard in a safe environment.

Between 8:45 AM and 9:00 AM, classroom doors will be open, and parents and carers can speak with their child's teacher or other members of staff. This is a great opportunity to share any important information or concerns for the day ahead.

Registration will take place from 8:45 AM to 8:55 AM. After or during registration, once their child(ren) have entered the classroom, parents/carers are politely asked to leave the school grounds via the gates - preferably before 09:00am

| Time of Day: | Details/Times: |
|---------------------|--|
| Collective Worship | Most Days @ 10:25 Special Mention Assembly (Fridays @ 09:00) |
| Morning Break times | 10:40 - 10:55 <i>EYFS do not have specific playtimes due to the 'Continuous Provision model'</i> |
| Lunchtime | 12:00 - 13:00 |
| Afternoon Break | 14:00 - 14:10 <i>(Predominantly Key Stage 1, however, Key stage 2 will use this depending upon educational opportunities)</i> |
| End of the Day | 15:15 <i>(The school gates will be opened as near to 15:05 as possible depending on the safety of our pupils).</i> |

We continue to be a 'Healthy School', so we promote children bringing in a healthy snack to eat.



2. Academic Excellence

2.1. Curriculum

Learning Through Faith, We Dream, Believe, and Achieve

A Journey to Discover Life in All Its Fullness (John 10:10)

Intent:

At St. Edmund's CofE Primary and Nursery School, our vision is to provide an inspiring, holistic curriculum that equips our children with the knowledge, skills, and values they need to be successful, confident, and compassionate individuals.

Our curriculum is grounded in our Christian faith and our **Sixcess Values** of **responsibility, respect, perseverance, truth and trust, compassion, justice, and forgiveness**. We believe that by nurturing these values, we can help our children develop into responsible, caring, and successful citizens.

Implementation:

Our curriculum is delivered through a well-structured and engaging approach that incorporates the following key elements:

- **Rigorous Academic Standards:** We maintain high standards in key subjects like English and mathematics, ensuring that our children are well-prepared for future success.
- **Creative and Engaging Learning:** We believe that children learn best when they are excited and engaged. Our curriculum incorporates creative and innovative approaches to teaching and learning.
- **Thematic Approach:** We use a thematic approach to learning that connects different subjects and helps children make meaningful connections between their knowledge.
- **Real-World Experiences:** We provide opportunities for children to apply their learning to real-world situations, such as historical simulations or scientific experiments.
- **Scaffolded Instruction:** We scaffold our instruction to meet the diverse needs of our students, ensuring that all children have access to challenging and engaging learning experiences.

Impact:

Learning through faith, we dream, believe and achieve.



Our curriculum is designed to have a positive impact on our children's lives in the following ways:

- **Academic Achievement:** Our curriculum prepares children for success in their future studies and careers.
- **Personal Development:** Our curriculum helps children develop important personal qualities such as **resilience, perseverance, and empathy**, which are aligned with our Sixcess Values.
- **Spiritual Development:** Our Christian ethos provides a foundation for spiritual growth and understanding.
- **Social Development:** Our curriculum helps children develop strong social skills and a sense of community, fostering **respect** and **compassion** for others.

A Journey to Discover Life in All Its Fullness:

"A Journey to Discover Life in All Its Fullness," reflects our commitment to providing our children with a rich and meaningful educational experience. We believe that through our curriculum, our children will embark on a journey of discovery, learning, and growth that will prepare them for a successful and fulfilling life.

2.2 Teaching & Learning

At St. Edmund's CofE Primary & Nursery School, we are committed to providing a high-quality education that equips our pupils with the knowledge, skills, and values they need to succeed in life. Our teaching and learning approach is grounded in research-based evidence and best practices.

Developing a Research Culture:

We are dedicated to fostering a culture of research and inquiry within our school. We regularly review and implement evidence-based practices from reputable organisations such as the Education Endowment Foundation (EEF) and the National Association for Gifted and Talented (NACE).



Key Features of Our Teaching and Learning Approach:

- **High Expectations:** We have high expectations for all of our pupils and strive to provide them with challenging and engaging learning experiences.
- **Personalised Learning:** We recognise that every child is unique and tailor our teaching to meet individual needs and learning styles.
- **Effective Assessment:** We use a variety of assessment methods to monitor pupil progress and inform our teaching.



- **Collaborative Learning:** We encourage collaborative learning opportunities to develop pupils' social and communication skills.
- **Continuous Professional Development:** We prioritise ongoing professional development for our staff to ensure they are equipped with the latest teaching strategies and knowledge.

A Culture of Inquiry:

We encourage a culture of inquiry and critical thinking among our pupils. We foster a love of learning and equip our students with the skills they need to become lifelong learners.

2.3 Assessment & Reporting

At St. Edmund's CofE Primary School, we are committed to providing regular and comprehensive feedback on your child's progress. We use a variety of assessment methods to monitor and evaluate pupil achievement, including:

- **Teacher Assessments:** Our teachers regularly assess pupils' work and progress using a range of formative and summative assessment techniques.
- **Standardised Assessments:** We administer standardised assessments, such as the Key Stage 1 and Key Stage 2 assessments, to measure pupil attainment against national benchmarks.
- **Diagnostic Assessments:** We use diagnostic assessments to identify any learning gaps or difficulties and provide targeted support.

Reporting to Parents

We provide regular reports to parents that outline your child's progress in key subject areas. These reports include information on your child's strengths, areas for development, and recommendations for support.

We provide a 'Meet the Teacher' opportunity at the start of every new academic year to offer the chance to hear how your child is settling in in an informal drop-in session. We also provide opportunities to meet the staff in a more formal capacity in the spring term in the form of a 'Parents' Meeting'. Then finally, we will send out written reports at the end of the academic year.



2.4 Special Educational Needs (SEN):

St. Edmund's CofE Primary and Nursery School is an inclusive mainstream school that strives to ensure a safe, happy and caring learning environment where children are able to reach their full potential and authentically recognise themselves and others as individuals with their own strengths and weaknesses.

We provide high-quality education for all regardless of age, gender, ethnicity, impairment, attainment and family background.

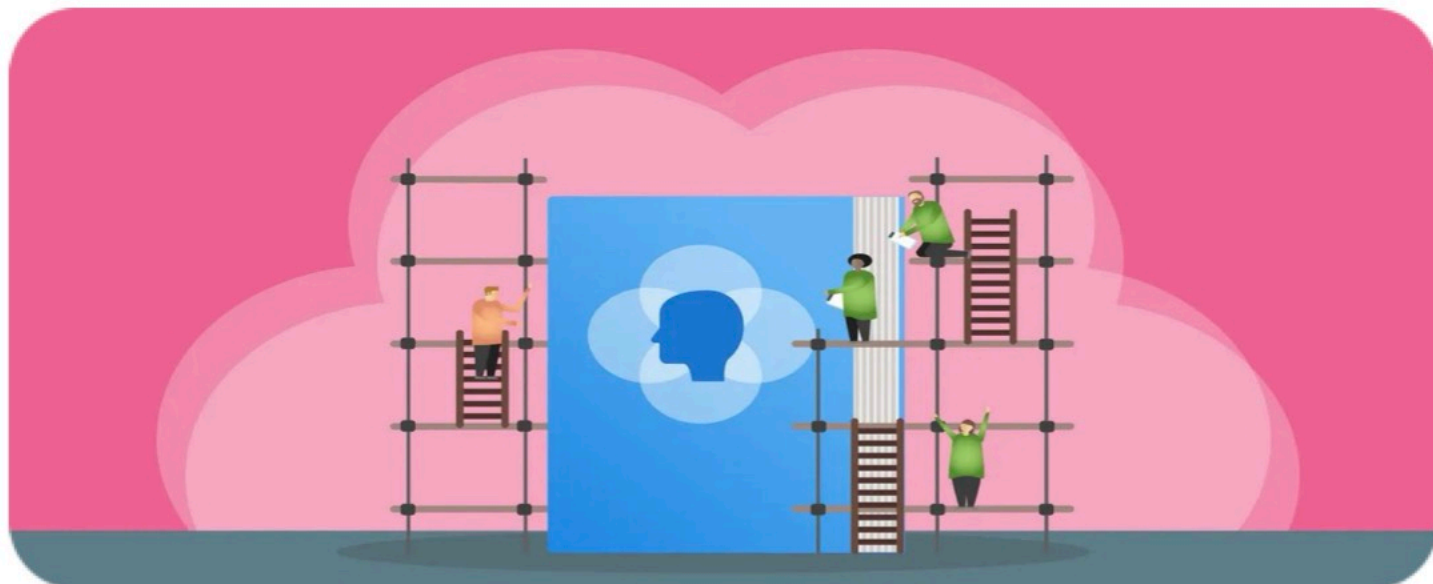
All staff and the Governing Body are highly committed to inclusion and the principles outlined in our SEND policy; working hard to ensure that provision is made for those who need it and that all children are given the opportunities to be the best they can be.

We believe that much can be done to overcome difficulties that children may experience, by parents, teachers and pupils working together.

Pupils with identified special educational needs are generally taught alongside their peers but will access a range additional support strategies, resources and teaching, specific to their needs.

If you wish to discuss an SEN need, please speak with our SENCo – Mrs Chandler.

More information on Special Educational Needs can be found on our school website





3. Pastoral & Well-being:



At St. Edmund's CofE Primary & Nursery School, we believe that every child deserves to feel safe, valued, and happy. Our school is dedicated to providing a nurturing and supportive environment where children can thrive academically, socially, and emotionally.

3.1 A Focus on Well-being

We prioritise the well-being of our pupils and staff, recognising that emotional health is just as important as academic achievement. Our pastoral care team, supported by highly trained specialists, works closely with children and their families to address any concerns or challenges.

3.2 Positive Behaviour and Discipline

We encourage positive behaviour and discipline through a consistent and supportive approach. Our Behaviour Policy outlines our expectations and strategies for promoting good behaviour and resolving conflicts.

This can be found on our school website (www.st-Edmund's.notts.sch.uk)

3.3 Building Strong Relationships

We believe in building strong relationships between children, staff, and parents. We foster a culture of respect, kindness, and understanding, where everyone feels valued and supported.

3.4 "A Happy and Harmonious School"

As recognised by Ofsted 2021, St. Edmund's is a "happy and harmonious school" where children can flourish. We are committed to providing a safe and supportive environment where every child can reach their full potential.

3.5 Religious Education & Collective Worship:

A Foundation for Spiritual and Moral Development

At St. Edmund's CofE Primary School, we are committed to providing a high-quality Religious Education (RE) curriculum that fosters spiritual, moral, and social development. Our RE program is grounded in the principles of the Church of England and aims to equip pupils with a deep understanding of Christianity and other major religions.



Key Elements of Our RE Curriculum:

- **Core Christian Beliefs:** We explore the fundamental beliefs of Christianity, including God, Jesus, the Holy Spirit, creation, and salvation.
- **Christian Ethics:** We examine Christian values and ethical principles, such as love, justice, forgiveness, and compassion. Our **Sixcess Values** of **Respect, Responsibility, Perseverance, Truth and Trust, Justice and Forgiveness**, and **Compassion** align with these core Christian principles.
- **Religious Diversity:** We study other major religions, including Islam, Judaism, Hinduism, Sikhism, and Buddhism, to promote understanding and respect for different beliefs and practices.
- **Spiritual Development:** We encourage pupils to develop their own spiritual understanding and connection to the world around them.

Collective Worship:

Collective worship is an integral part of our school life. It provides an opportunity for pupils to reflect on their beliefs, values, and experiences. Our collective worship assemblies are inclusive and accessible to all, promoting a sense of community and belonging.



Key Principles of Our Collective Worship

- **Christian Focus:** Our collective worship is rooted in Christian values and traditions.
- **Inclusive:** We strive to create a welcoming and inclusive atmosphere where all pupils feel valued and respected.
- **Engaging:** We use a variety of creative and engaging approaches to make collective worship meaningful and relevant to our pupils.
- **Spiritual Development:** We aim to foster spiritual growth and development through collective worship.

For more information on our Religious Education and Collective Worship policies, please refer to our school website:

www.st-Edmund's.notts.sch.uk

<https://southwell.anglican.org>

Learning through faith, we dream, believe and achieve.





3.6 Equality & Inclusion:

A Commitment to Fairness and Respect

At St. Edmund's CofE Primary and Nursery School, we are committed to ensuring equality of education and opportunity for all pupils, staff, parents, and carers, regardless of race, gender, disability, faith or religion, or socio-economic background. We aim to create a culture of inclusion and diversity where everyone feels valued, respected, and able to participate fully in school life.



Monitoring and Evaluation

We regularly monitor the achievement of pupils by race, gender, and disability to identify any disparities and take appropriate measures to address them. This data informs our teaching practices and ensures that all pupils have equal opportunities to succeed.

Tackling Discrimination

We actively promote equality by challenging bullying, stereotypes, and discrimination. We create an environment where respect for all is a core value.

Celebrating Diversity

We believe that diversity is a strength and that everyone should be celebrated for their unique identity. We encourage a culture of inclusivity where all members of our school community feel valued and respected.



4. Extra-Curricular Activities:

4.1 Sports & Clubs:

At St. Edmund's CofE Primary School, we believe that extracurricular activities play an important role in a child's development. We offer a wide range of sports and clubs to cater to the interests and talents of our pupils.

Competitive Sports

We participate in various local and regional competitions, including **Sainsbury's School Games**, giving our pupils the opportunity to represent the school and develop their competitive skills.

Play Leaders

We have a thriving 'Play Leaders' program that provides opportunities for older pupils to develop their leadership skills and support younger children in sports activities.

For more information on our sports and clubs program, please contact the school office.





4.3 Trips and Residential

At St. Edmund's CofE Primary School, we believe that trips and residential visits provide invaluable opportunities for our pupils to learn outside the classroom. These experiences enrich their learning, broaden their horizons, and create lasting memories. Years 3, 4, 5 and 6 should all look forward to experiencing our residential opportunities.

Residential Visits:

| Destination: | Description: |
|---|--|
| <ul style="list-style-type: none"> Scarborough | <ul style="list-style-type: none"> Our annual residential trip to Scarborough offers pupils the chance to experience the seaside, participate in outdoor activities, and build teamwork and independence. |
| <ul style="list-style-type: none"> London | <ul style="list-style-type: none"> We organise trips to London to explore historical landmarks, cultural attractions, and educational institutions. |
| <ul style="list-style-type: none"> Sherwood Forest: | <ul style="list-style-type: none"> Our visits to Sherwood Forest provide opportunities for pupils to learn about local history, explore the natural environment, and engage in outdoor activities. |

Day Trips:

In addition to residential visits, we also organise a variety of day trips that support our curriculum and provide exciting learning experiences. These trips may include:

| Type: | Description |
|---|---|
| <ul style="list-style-type: none"> Museums and Galleries: | <ul style="list-style-type: none"> Visits to local and national museums and galleries to enhance our curriculum and spark curiosity. |
| <ul style="list-style-type: none"> Historical Sites: | <ul style="list-style-type: none"> Trips to historical sites to bring history to life and provide context for our learning. |



| Type: | Description |
|---|--|
| <ul style="list-style-type: none"> Outdoor Education Centres: | <ul style="list-style-type: none"> Visits to outdoor education centres for hands-on learning experiences in nature. |
| <ul style="list-style-type: none"> "Wow" Days: | <ul style="list-style-type: none"> Special day trips designed to consolidate learning, engage pupils in topics, and create memorable experiences. |

Benefits of Trips and Residential Visits:

- **Enrichment:** Trips and residential visits provide opportunities for enrichment and broaden pupils' horizons.
- **Learning:** These experiences can enhance learning by providing real-world context and making subjects more engaging.
- **Personal Development:** Trips and residential visits can help pupils develop important skills such as independence, teamwork, and resilience.
- **Memories:** These experiences create lasting memories that can have a positive impact on pupils' lives.

For more information on our trips and residential visits program, please contact the school office.



4.4 The Lime Trees:



At St. Edmund's, we are committed to providing flexible childcare options to meet the needs of our families. We partner with The Lime Trees, a reputable external provider, to offer high-quality wrap-around care for our pupils before and after school.

The Importance of Wrap-Around Care:

Providing wrap-around care offers several important benefits for both children and families:

| | |
|---|---|
| <ul style="list-style-type: none"> • Peace of mind for parents: | <ul style="list-style-type: none"> • Knowing that their children are in a safe and nurturing environment can give parents peace of mind, especially for those who work long hours or have other commitments. |
| <ul style="list-style-type: none"> • Consistent care: | <ul style="list-style-type: none"> • By providing care before and after school, wrap-around programs can offer children a sense of continuity and consistency in their daily routine. |
| <ul style="list-style-type: none"> • Extended learning opportunities: | <ul style="list-style-type: none"> • Wrap-around care often includes activities that complement the school curriculum, providing children with additional opportunities for learning and development. |
| <ul style="list-style-type: none"> • Socialisation: | <ul style="list-style-type: none"> • Wrap-around care can help children develop social skills and make new friends. |
| <ul style="list-style-type: none"> • Flexibility | <ul style="list-style-type: none"> • By offering flexible hours, wrap-around care can accommodate the needs of working families. |



The Lime Trees is a childcare company with a focus on providing a nurturing and stimulating environment for children. They are passionate about creating a safe and happy space where children can learn, play, and grow.

Here are some of the benefits of The Lime Trees wrap-around care:

- Experienced and qualified staff
- A variety of fun and educational activities
- Nutritious meals and snacks
- Flexible hours to suit your needs

For more information about The Lime Trees and their wrap-around care services,

please visit their website at <https://thelimetrees.co.uk/>.



The Lime Trees' story is rooted in helping and supporting each individual family. We're more flexible and affordable than any other nursery, with a brilliant service through every stage of your child's experience



5. Admissions & Enrolment:

5.1 admissions process

How to Apply:

To apply for a place at St. Edmund's CofE Primary School, please follow the admissions process outlined by Nottinghamshire County Council. You can find detailed information and application forms on the council's website:

<https://www.nottinghamshire.gov.uk/education/school-admissions>

Or

<https://www.nottinghamshire.gov.uk/education/school-admissions/hub>

Key Dates and Deadlines:

- **Application Deadline:** Please refer to the Nottinghamshire County Council website for the latest application deadline.
- **Admission Offers:** Offers of admission will be sent out in accordance with the council's admissions policy.

Admission Criteria:

Admissions to St. Edmund's CofE Primary School are based on the Nottinghamshire County Council's admissions criteria. Priority is given to children who live within the school's catchment area.

Whilst we have a Church of England label, a family's religious background has absolutely no impact on whether you will receive an offer for a school place here, neither does a family's attendance at church have any 'sway', when the Local Authority allocates places for our school. We welcome all children and all families here at St. Edmund's. We are very proud to say that we respect all our children on equal terms, whatever their individual backgrounds.

Additional Information:

- **Open Days:** We regularly hold open days to give prospective parents and pupils an opportunity to visit the school and learn more about our offerings.



- **Contact Us:** If you have any questions about the admissions process, please do not hesitate to contact the school office.

We look forward to welcoming you to St. Edmund's CofE Primary & Nursery School!

5.2 Fees and Financial Aid:

St. Edmund's CofE Primary School is a state-funded school, meaning that there are no tuition fees to pay.

Financial Assistance:

If you are experiencing financial hardship and require assistance with school-related costs, please contact the school office to discuss available options. We may be able to connect you with local support services or government programs that can provide financial aid.

Additional Costs:

While there are no tuition fees, there may be additional costs associated with school activities, such as trips, school uniforms, and extracurricular clubs. These costs will be communicated to parents in advance.

For more information on fees and financial aid, please contact the school office

5.3 Attendance:

Our school attendance target is: 96%, which is deemed GOOD attendance by the Department of Education & OfSTED.

In line with the Department for Education's guidance, "Working Together to Improve School Attendance," we have implemented several strategies to promote consistent attendance:

- **Clear Expectations:** We have established clear expectations for attendance and punctuality, communicated to both pupils and parents.
- **Early Intervention:** We proactively identify and support pupils at risk of absence, working closely with families to address any underlying issues.
- **Positive Reinforcement:** We celebrate and reward good attendance to foster a positive culture of punctuality.



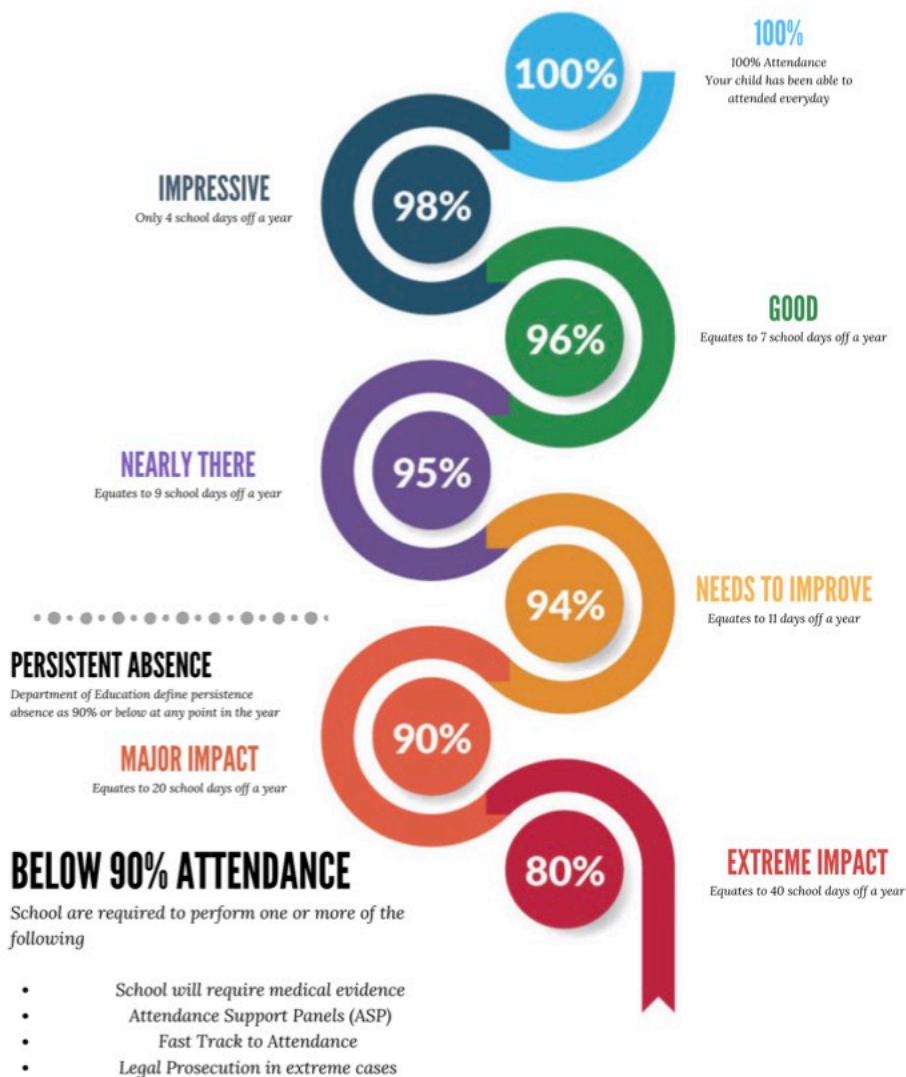
- **Data Analysis:** We regularly analyse attendance data to identify trends and inform our interventions.
- **Collaboration with Families:** We work closely with parents and guardians to understand the reasons for absence and provide support where needed.

We believe that regular attendance is essential for academic achievement and social development. By working together, we can create a school environment where all pupils have the opportunity to succeed.

For more information on our attendance policies and procedures, please refer to our school website.

ATTENDANCE AND PUNCTUALITY:

Where does your child sit on the attendance ladder?



Department
for Education



6. Facilities



6.1 classrooms and learning spaces

At St. Edmund's CofE Primary School, we are proud to offer modern and well-equipped classrooms and learning spaces that support our pupils' learning and development.

Key Features of Our Classrooms:

- **Interactive Whiteboards:** Our classrooms are equipped with interactive whiteboards, which provide a stimulating and engaging learning experience.
- **Resources and Equipment:** We have a wide range of resources and equipment to support teaching and learning across all subjects.
- **Flexible Learning Spaces:** Our classrooms are designed to be flexible and adaptable, allowing for different teaching and learning styles.

- **Natural Light and Ventilation:** Our classrooms are well-lit and ventilated, creating a comfortable and healthy learning environment.

Specialised Learning Areas:

In addition to our general classrooms, we also have specialised learning areas, including:

- **Library:** Our library is stocked with a wide range of books and resources to support reading, research, and learning.
- **Music Room:** Our music room is equipped with musical instruments and technology to support music education.

Investment in Technology:

We aim to be innovative by investing heavily in technology to ensure our children are well-prepared for the 21st century. Our classrooms will be equipped with modern technology, such as tablets, computers, and digital resources, to support learning and provide our pupils with the skills they need to succeed in a digital age.



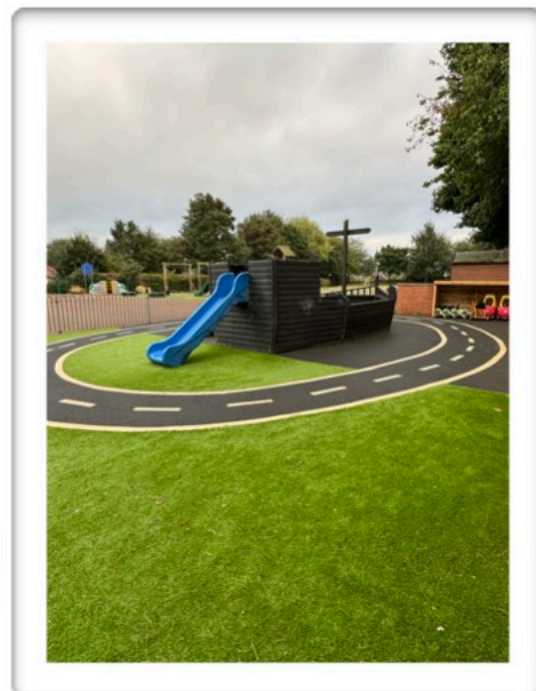


6.2 outdoor areas

At St. Edmund's CofE Primary & Nursery School, we believe that outdoor learning is an essential part of a well-rounded education. Our school is equipped with a variety of outdoor spaces that provide a stimulating and engaging learning environment for our pupils.

Key Features of Our Outdoor Areas:

- **Playgrounds:** We have modern and well-maintained playgrounds that offer a safe and fun space for children to play and socialise.
- **Outdoor Learning Areas:** Our outdoor learning areas are designed to support a variety of educational activities, including gardening, science experiments, and outdoor classrooms.
- **Sports Fields:** We have sports fields for a variety of activities, including football, rugby, and athletics, amongst others.
- **Nature Garden:** Our nature garden provides a peaceful and tranquil space for pupils to connect with the natural world.
- **Forest School:** We offer a Forest School program that provides children with opportunities to learn and develop skills through hands-on experiences in a natural setting.
- **Nursery Outdoor Play Area:** Our nursery outdoor play area is designed to meet the specific needs of our youngest pupils, with age-appropriate equipment and activities.



Benefits of Outdoor Learning:

- **Physical Health:** Outdoor play and activities promote physical health and fitness.
- **Mental Health:** Spending time in nature has been shown to have positive effects on mental health and well-being.
- **Cognitive Development:** Outdoor learning can enhance cognitive development and creativity.
- **Social Skills:** Playing and learning outdoors can help



children develop social skills and teamwork.

We believe that our outdoor areas play a vital role in providing a holistic and enriching education for our pupils.

6.3 Lunchtimes:

We operate a 'family service' system which promotes responsibility amongst our oldest children and encourages conversation around the table. Midday staff circulate to ensure children act responsibly towards each other, that they have a good, standard-sized portion of food and that table manners are at their best. As well as our midday staff, we have members of the teaching team available daily to support our children throughout their lunchtimes.



Our #St.EdWRITER Display



7. Uniform:

Our school colour is 'Royal Blue'.

You can purchase our branded uniform here: [Myschoolclothing](https://myschoolclothing.co.uk/)



| Our children wear: | PE Kit |
|---|---|
| <ul style="list-style-type: none"> • Polo shirts, shirts or blouses in white or blue • Sweatshirts, cardigans or jumpers in royal blue • Long trousers or shorts in grey or black • Knee-length skirts in grey or black • Pinafore dresses in blue • Socks and/or tights in white, grey or black • Black shoes or plain black/grey trainers with no logos (sensible boots may also be worn in bad weather) • All shoes must have a low heel | <ul style="list-style-type: none"> • Plain white or blue t-shirt, or a t-shirt with our school logo • Shorts/tracksuit bottoms in blue or black • Sensible trainers for outdoor use or plimsolls • Tracksuit top or jumper in blue or black |
| <p>School uniform does not have to have our logo on it. You are very welcome to purchase non-branded uniform from a supermarket or other supplier, as long as the colours match ours.</p> | <p><u>Jewellery</u></p> <p>Jewellery is not to be worn by pupils in school.</p> <p>On the day that your child has PE, they should come to school in their PE kit instead of their usual school uniform. This saves time with getting changed in school and also avoids items of clothing getting lost.</p> |



8. Parent Involvement:

8.1 PTA

Supporting Our School Community

The 'Friends of St. Edmund's' is a dedicated group of parents and volunteers who work together to raise funds and support our school community. Through various fundraising activities, helps to provide additional resources and enhance the educational experience for our pupils.

How 'Friends of St. Edmund's' Makes a Difference:

| | |
|---|--|
| <ul style="list-style-type: none"> Funding School Projects: | <ul style="list-style-type: none"> Friend's of St. Edmund's has supported a variety of school projects, including new equipment, resources, and facilities. |
| <ul style="list-style-type: none"> Enhancing the School Environment: | <ul style="list-style-type: none"> Friend's has contributed to improvements in our school environment, such as landscaping, playground upgrades, and classroom enhancements. |
| <ul style="list-style-type: none"> Supporting Extracurricular Activities: | <ul style="list-style-type: none"> Friends helps to fund extracurricular activities and trips, providing opportunities for our pupils to broaden their horizons and develop new skills. |

How to Get Involved:

We encourage all parents and carers to get involved with FOSE and help support our school community. There are many ways to contribute, including:

- Attending Fundraising Events:** Join us for our exciting fundraising events, such as fairs, bake sales, and raffles.
- Volunteering:** Share your time and talents by volunteering at school events or helping with fundraising activities.
- Making Donations:** Consider making a donation to Friends of St. Edmund's to support our important work.

For more information on 'Friend's Of St. Edmunds' and how to get involved, please contact the school office.



8.2 communication

At St. Edmund's CofE Primary & Nursery School, we believe that strong partnerships between home and school are essential for the success of ALL our pupils. We are committed to open and effective communication with parents to keep them informed about their child's progress and to involve them in their education.

Key Communication Strategies:

- **Regular Updates:** We provide regular updates on your child's progress through parent-teacher conferences, reports, and termly newsletters.
- **Open Doors Policy:** We maintain an open-door policy, encouraging parents to contact us at any time with questions or concerns.
- **Online Platforms:** We utilise online platforms (Arbor parent app, Facebook and instagram) to share information and facilitate communication with parents.
- **Parent-Teacher Associations:** We actively support our Parent-Teacher Association (PTA) and encourage parent involvement in school activities.

In line with the Education Endowment Foundation's (EEF) guidance on working with parents, we prioritise the following strategies:

- **Clear and Consistent Communication:** We ensure that our communication with parents is clear, concise, and consistent.
- **Two-Way Communication:** We encourage two-way communication, where parents can share their thoughts, concerns, and ideas.
- **Positive Relationships:** We strive to build positive and supportive relationships with parents.
- **Cultural Sensitivity:** We are mindful of cultural differences and ensure that our communication is culturally sensitive.

By working together, we can create a strong partnership between home and school that benefits our pupils and the wider community.



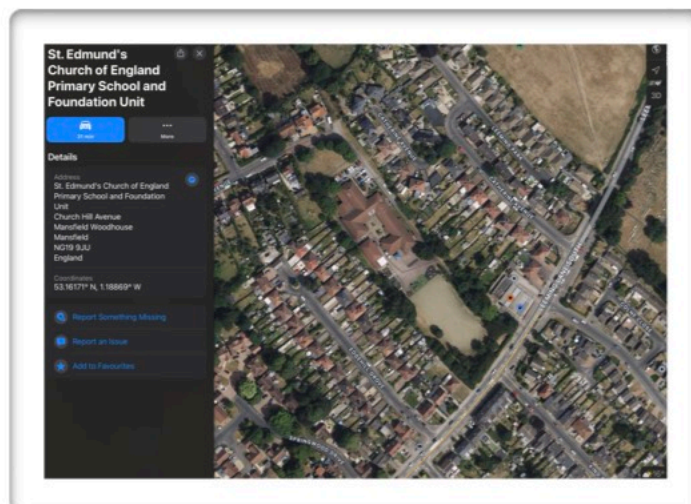
9. Contact information

9.1 school address

St. Edmund's CofE Primary & Nursery School
Church Hill Avenue
Mansfield Woodhouse
Nottinghamshire
NG19 9JU

01623 646624

office@st-edmunds.notts.sch.uk



9.2 website

www.st-Edmund's.notts.sch.uk



9.3 social media:



<https://www.facebook.com/St.EdmundsCofE>



<https://www.instagram.com/st.edmundscofe>



10. 'Sixcess' Christian Value Links

Here's how our Sixcess Values can be linked to various sections of the prospectus:

- Pastoral Care and Behaviour: **Respect**, **Compassion**, **Justice and Forgiveness**
- Wrap-Around Care: **Responsibility**, **Respect**, **Compassion**
- Equality and Inclusion: **Respect**, **Justice and Forgiveness**, **Compassion**
- Attendance: **Responsibility**, **Respect**
- Religious Education and Collective Worship: **Truth and Trust**, **Compassion**, **Justice and Forgiveness**
- Teaching and Learning: **Perseverance**, **Responsibility**, **Respect**
- Communication with Parents: **Respect**, **Truth and Trust**
- Outdoor Areas: **Respect**, **Responsibility**, **Compassion**
- Admissions Process: **Respect**, **Responsibility**
- Fees and Financial Aid: **Justice and Forgiveness**, **Compassion**
- Assessment and Reporting: **Responsibility**, **Respect**, **Truth and Trust**

By linking our Sixcess Values to these key areas of the prospectus, we can demonstrate how our school is committed to creating a nurturing and inclusive environment where children can thrive academically, socially, and spiritually.

11. Conclusion

We believe that our school offers a unique and nurturing environment where children can thrive academically, socially, and spiritually. Our focus on excellence, innovation, and pastoral care ensures that our pupils are well-prepared for their 'flourishing' future success.

We invite you to join the St. Edmund's community and experience the difference a Christian education can make.

#BeaconofExcellence #St.Eddies #SixcessValues #community