



Issue:

#2

Term:

Autumn

Date:

November 2024

Diary Dates:

| Monday | Tuesday | Wednesday | Thursday | Friday | Saturday | Sunday |
|------------------------|------------------------|------------------------|------------------------|-----------------------------|----------|--------|
| | | | | 1 Catholic Day of Prayer | 2 | 3 |
| 4 | 5 | 6 St. Edmund's Day | 7 St. Edmund's Day | 8 St. Edmund's Day | 9 | 10 |
| 11 St. Edmund's Day | 12 St. Edmund's Day | 13 St. Edmund's Day | 14 St. Edmund's Day | 15 St. Edmund's Day | 16 | 17 |
| 18 | 19 St. Edmund's Day | 20 | 21 | 22 | 23 | 24 |
| 25 St. Edmund's Day | 26 | 27 | 28 St. Edmund's Day | 29 | 30 | |

Found here: [School Calendar](#)

Key dates can be found on the
school website calendar.

READING IS ESSENTIAL FOR
THOSE WHO SEEK TO RISE
ABOVE THE ORDINARY.

—Jim Rohn



@weareteachers

Headteacher Message:

Dear Parents and Carers,

As we reach the midpoint of the spring term, which also signifies the half-way point of this academic year, I am delighted to share some of the wonderful things that have been happening at St. Edmund's CofE Primary and Nursery School. It's been a busy and productive half-term, filled with learning, exciting opportunities, a real sense of community, and a continued focus on our core purpose: fostering academic excellence.

This half-term has been particularly eventful, with a range of activities and achievements that I'm incredibly proud to share. We've embraced new initiatives, celebrated successes, and continued to strengthen our school community. Underpinning all of this is our unwavering commitment to reading as the foundation for successful learning. We firmly believe that strong reading skills are essential for unlocking every child's potential and enabling them to thrive academically.

Our focus on reading remains an integral part of school life, and we are already seeing positive impacts from our new phonics scheme. The children are engaging enthusiastically with the programme, and we are delighted to see their reading skills and confidence growing. We are committed to providing our children with the very best reading instruction, and we will continue to invest in resources and training to ensure this.

Thank you for your continued support and co-operation,

Mr Bandy-Webb



#BAND74EVA



Vision, Aims & Values:

At St. Edmund's C of E Primary and Nursery School, we aspire to be a beacon of excellence, a vibrant and welcoming Christian community where all children flourish spiritually, academically, socially, and emotionally. Inspired by the teachings of the Bible, we foster a culture of curiosity, creativity, compassion, and service. Here, every child is known, valued, and empowered to become a confident, responsible, and thriving individual who makes a positive impact on the world.

By educating for life in all its fullness, we are preparing our students for a bright future. We believe that our pupils will be confident, resilient, and well-rounded individuals who are ready to make a positive impact on the world.

A #StEDDIE is a proud member of our school community who embodies our Christian values in all aspects of their life.

'Sixcess' Values:

Our 'Sixcess' Values underpin everything we do at St. Edmund's. They are the guiding principles for our relationships, learning, and actions.

Respect: We treat everyone with dignity and kindness, valuing diversity and celebrating individuality.

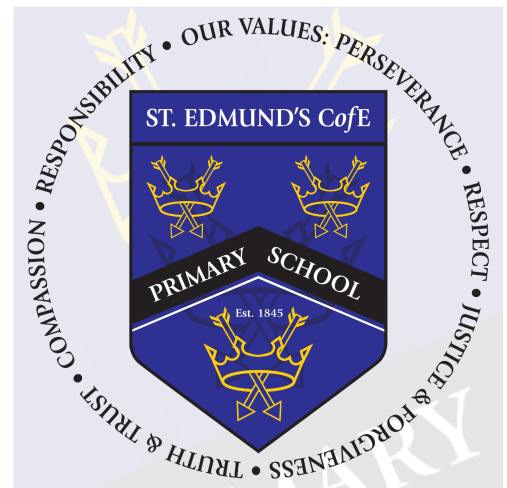
Responsibility: We are accountable for our actions and choices, demonstrating reliability and self-discipline.

Perseverance: We approach challenges with determination and resilience, learning from setbacks and striving for excellence.

Truth and Trust: We build strong relationships based on honesty, integrity, and reliability.

Justice and Forgiveness: We promote fairness, equality, and compassion, seeking to reconcile and restore relationships.

Compassion: We show empathy and care for others, demonstrating kindness and generosity of spirit.



Together, inspired by Christian values, we embark on a journey to discover life in all its fullness, equipping our children to flourish and leave their positive mark on the world.

School Prayer:

Lord,

Bless this day and all it brings.

Thank you for our school; Make it a place of laughter and friendship, let our school be a place where we can learn and share our hopes and dreams.

Bless our lives, that we may grow in your love. Help us show forgiveness when people make mistakes - even when we have been hurt.

Bless our work, that we use our gifts and talents wisely. Encourage us to persevere when things are challenging.

Bless our hearts and teach us to care for one another.

Amen.

The school's new prayer aligns closely with the Church of England's vision for a deeply Christian education system. By fostering a culture of respect, responsibility, and perseverance, the school is actively contributing to the development of well-rounded individuals.

Our new school prayer embodies the spirit of John 10:10, which promises a life of abundance and fulfilment. By nurturing a flourishing culture, we are creating an environment where our pupils can succeed and reach their full potential.

We are delighted to introduce our new school prayer, which has been thoughtfully chosen by our staff and children. This prayer reflects our commitment to fostering a positive and nurturing learning environment where our pupils can thrive.

The prayer incorporates our school's "Sixcess" values: respect, responsibility, perseverance, truth and trust, compassion, justice, and forgiveness. These values are fundamental to our school community and guide our daily interactions.

We hope that this prayer will inspire our pupils to develop a sense of belonging, compassion, and resilience. It is our belief that by embracing these values, we can create a school where everyone feels safe, supported, and valued.

School Expectations:



Our School Expectations:

Our behaviour policy is underpinned by our Christian values of **respect**, **truth and trust**, **compassion**, **responsibility**, **justice and forgiveness**, and **perseverance**. These values are integral to creating a positive and nurturing learning environment where all pupils feel safe, valued, and empowered to reach their full potential.

Parents and carers:

Parents and carers, where possible, should:

- * Support their child in adhering to the school's behaviour policy
- * Inform the school of any changes in circumstances that may affect their child's behaviour
- * Discuss any behavioural concerns with the class teacher promptly
- * Take part in any pastoral work following misbehaviour (for example, attending reviews of specific behaviour interventions)
- * Raise any concerns about the management of behaviour with the school directly, while continuing to work in partnership with the school
- * Take part in the life of the school and its culture

5 Pillars of Pivotal Practice:



The school will endeavour to build a positive relationship with parents and carers by keeping them informed about developments in their child's behaviour and the school's policy, and working in collaboration with them to tackle behavioural issues.

Ready to learn;

Respectful of themselves and others;

Responsible in school

Drawing upon the Church of England's values and aims for flourishing schools, we believe in:

- Educating for Dignity and Respect: Promoting the inherent dignity and value of every person, created in the image of God. We celebrate diversity and encourage children to treat everyone with kindness, compassion, and respect.



School Uniform:



| Our children wear: | PE Kit |
|---|--|
| <ul style="list-style-type: none"> • Polo shirts, shirts or blouses in white or blue • Sweatshirts, cardigans or jumpers in royal blue • Long trousers or shorts in grey or black • Knee-length skirts in grey or black • Pinafore dresses in blue • Socks and/or tights in white, grey or black • Black shoes or plain black/grey trainers with no logos (sensible boots may also be worn in bad weather) • All shoes must have a low heel | <ul style="list-style-type: none"> • Plain white or blue t-shirt, or a t-shirt with our school logo • Shorts/tracksuit bottoms in blue or black • Sensible trainers for outdoor use or plimsolls • Tracksuit top or jumper in blue or black <p><u>Jewellery</u></p> <p>Jewellery is not to be worn by pupils in school.</p> |
| <p>School uniform does not have to have our logo on it. You are very welcome to purchase non-branded uniform from a supermarket or other supplier, as long as the colours match ours.</p> | <p>On the day that your child has PE, they should come to school in their PE kit instead of their usual school uniform. This saves time with getting changed in school and also avoids items of clothing getting lost.</p> |

For branded school uniform, check out this website: myclothing.com



News 1: Technology:



Spring term marks the start of our #TechRevolution!

Technology has been proven to enhance the learning of children - even across subjects.

Our pupils are definitely going to need to know how to use technology well in order to be more 'Sixcessful' and ready for work in the 21st century.

Our ICT suite has served a purpose, but times change...

This half term, we have been gifted 35 Chromebooks and 25 iPads - we are going mobile! We have been well and truly spoilt!

A huge thank you and our deepest appreciate must go to:

Airnow Technology (<https://www.linkedin.com/company/airnow-technology/>) and Rob Austin for their massive contributions! Without them, this would not have been possible.

This is just the beginning...

#sixcessvalues #beaconofexcellence #steddies #21CenturyLearning
#Computing #technology #curriculum

News 2: Potential School Library Design:

We're excited to share some potential designs for a brand new school library!

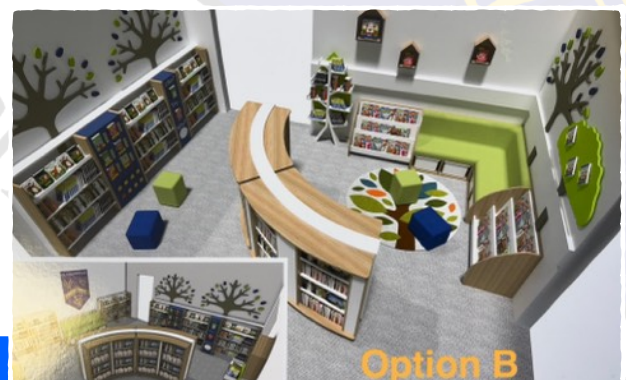
Reading is so important, and a great library is the perfect place to get our #StEDDIES even more excited about books!

These are just some initial ideas, with the cost in the region of £12k.

As most of you are aware, our financial situation is challenging and we rely on awesome gestures from local businesses and our wonderful community.

If you know someone/business who would be interested in our library development, please let us know...we would love to collaborate with them!

Which one is your favourite? Option A or Option B?





News: Blue Peter:



WOW!

Some of our 'budding' scientists in year 5 had the wonderful opportunity of speaking to BBC as part of their research on how better to improve their content and programmes for future initiatives involving earth, space and astronomy for Blue Peter!

Our #StEDDIES were amazing and contributed incredibly well! We are so proud of them!

Nottinghamshire County Council Diocese of Southwell and Nottingham St. Ed's Church Mansfield Woodhouse

#ResearchCulture #bluepeter #sixcessvalues
#beaconofexcellence #year5



News: Deputy Head Incoming:

As you know, Mrs. Pembury left us in December, and we extend our sincere thanks to Mrs. Hird-Shaw for stepping up and acting as Deputy Headteacher since then. She has done a truly fantastic job, and her dedication to St. Edmund's has been invaluable.

We have some incredibly exciting news to share! Following a rigorous interview process, we are delighted to announce that we have appointed a new Deputy Headteacher! Even more exciting is that this new role will also incorporate the responsibility of SENCo. We are absolutely thrilled to welcome them to our team and are confident that they will be a wonderful asset to our school community. We will, of course, share more information about our new Deputy Headteacher as we get closer to their start date.

However, as our new Deputy Headteacher will not be joining us until September 2025, we are incredibly grateful that Mrs. Hird-Shaw has graciously accepted our request to continue as Acting Deputy Headteacher until the end of this academic year. This will ensure a smooth transition and provide continuity for our children, staff, and families. Thank you, Mrs. Hird-Shaw, for your continued commitment and leadership!

COMING SOON

News: Book Trust Research:

Reading supports children to develop better mental wellbeing, social skills and strong relationships

They feel more secure and develop deep bonds with parents/carers

As a bonding activity, shared reading in their early years supports the development of a child's attachment (how safe, secure and trusting they feel around their parent or carer). Attachment is essential to a child's future happiness, social competence, and ability to form meaningful connections.² The availability of their parent or carer¹⁰ during shared reading contributes to a child's sense of safety.¹¹

Shared reading creates opportunities for joint attention and emotional closeness between a child and their parent or carer. Shared reading increases parental warmth and reduces parental stress¹², enabling them to provide the sensitive and nurturing interactions their children need to thrive.^{13,14}

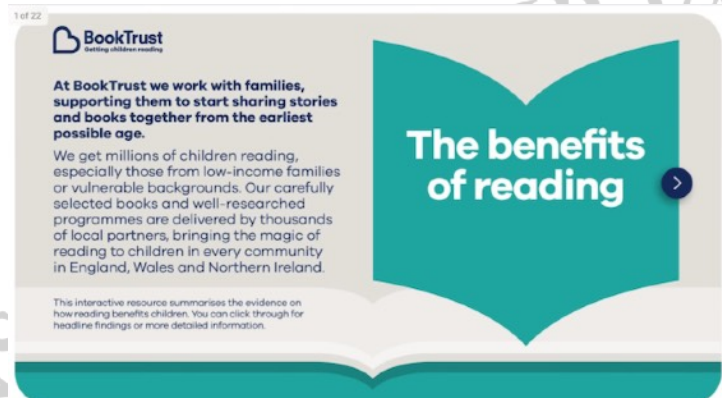
Reading supports children to meet speech and language milestones and do better at school

They have better brain development, attention, and cognitive ability

Children's brains experience the most growth in their first 5 years, when their brains are most responsive to their environment.²⁵ Stimulation from reading books, playing, talking, and singing with a parent or carer serves an important neurological function, enhancing children's cognitive, physical, social, and emotional growth.²⁶

Shared reading among children from low-income backgrounds enhances healthy brain activation in language, attention, memory, self-control, and adjustment.²⁷

Reading for pleasure has long-lasting positive benefits on brain development. Younger children who read more score better on cognitive tests.²⁸



<https://www.booktrust.org.uk/globalassets/resources/research/booktrusts-benefits-of-reading-june-2024.pdf>

News: St. Edmund's Got Talent:



Well it's official... St. Edmund's definitely has talent!!



After a rigorous audition process, relentless rehearsals and discussions over song choices, our final performances were simply exemplary!

A huge well done to all who performed and thank you to all those in attendance!



News: Signage:

Our full signage refurbishment has now been completed with the help of our friends at 'Sign Power'

Our new signs show off our slogan and values, while providing important information to visitors.

We think they look great!

As as school, our financial situation is very challenging, so we are hugely grateful for our community and local businesses that are willing to help shape our school in supporting our children to be ready for workplace in the 21st Century.



News: Bun in the Oven:



We are absolutely thrilled to share some wonderful news with our school community! Our very own Olivia Morgan has announced that she is expecting a baby! Everyone at St. Edmund's is overjoyed for Olivia and her family. We wish her all the very best as she embarks on this exciting new chapter. We know she will make a fantastic parent, and we look forward to sharing more updates with you in the coming months. Congratulations, Olivia!

News: Phonics

We're excited to announce that we've invested in a new systematic phonics scheme, FFT Phonics For All! This comprehensive program is designed to help our pupils develop strong phonics skills and become confident readers.

In addition, the scheme includes aligned books that reinforce classroom learning and provide opportunities for independent reading practice

Our ambition is to enable success for all children and inspire a lifelong love of reading." (FFT - 2022)



Success for All



Success for All
Phonics

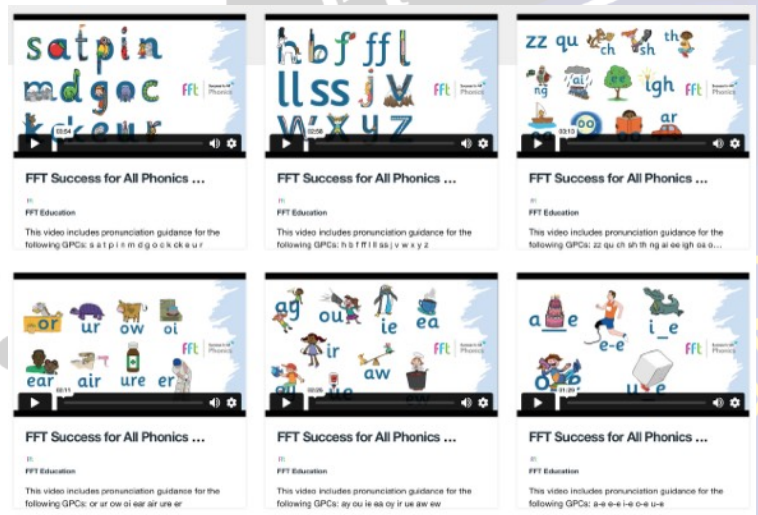
Parent Portal



We hope you find all the resources on our growing Parent Portal useful to support your child's phonics and early reading.

The materials are designed to support the learning your child is experiencing in school. At the moment the resources include all of the Shared Readers we have available so you can reread and enjoy the books together after they have been read in school. Please see the [Tips for Home Reading](#) section for advice on how to read these books with your child at home.

****More information coming soon***



<https://www.st-edmunds.notts.sch.uk/phonics/>



Attendance:

Face-to-face education is important in helping pupils to fulfil their potential.

During school time, we believe pupils should be in class with their teachers and peers and enjoying all the benefits that brings.

Parents or carers of a child(ren), have a legal responsibility to ensure their child receives a suitable education. This is usually achieved through regular attendance at school.

For more information: [DfE: Importance of attendance](#)

**School
Target:**

96%

School vs National Data:



We're delighted to share that our school attendance from September 9th to February 07th has achieved an impressive +0.9% score compared to the national average (Year to Date (YTD)). This is a fantastic accomplishment that reflects the commitment of our pupils, staff, and parents to ensuring regular attendance. Please keep it up, if we can... 👍





Other News: Remembering Geoff Stafford:

With profound sadness, we share the news of the passing of Geoff Stafford on December 27th. Geoff was a beloved and long-standing Governor of St. Edmund's CofE Primary and Nursery School, serving our community with unwavering dedication since 2007.

His commitment to education extended beyond his role as a Governor. Prior to joining our school community, Geoff made a significant impact as an Education Welfare Officer and as part of the police, became one of the first in Nottinghamshire to be trained to deliver the D.A.R.E program to our Year 6 cohorts. This initiative reflected his deep belief in guiding young people towards positive choices and responsible citizenship.

Geoff was an active member of NAGS (National Association for Governors), demonstrating his commitment to professional development and best practices in school governance. He was a true advocate for children, exemplifying our Sixcess values of respect, responsibility, truth and trust, compassion, justice and forgiveness, and perseverance in every interaction.

Within our school, Geoff was known for his kind and gentle nature. He was always approachable, offering a listening ear to students of all ages. He found joy in the simple things, such as listening to children read, demonstrating his genuine interest in their growth and development.

Geoff was a pillar of our school, a reliable and conscientious partner in education. His unwavering positivity and genuine love for children shone through in everything he did.

As our Chair of Governors, Paul Smith, eloquently stated, "The world needs more Geoff's." This sentiment perfectly encapsulates the profound impact Geoff had on our school community and beyond.

While we mourn his loss, let us celebrate the profound impact Geoff had on our school and the countless lives he touched. His legacy will continue to inspire us all to strive for excellence, kindness, and a commitment to making a positive difference in the world.

A true St. Eddy.

<https://nottsnarpo.org/2024/12/30/book-of-condolence-retired-officer-geoffrey-david-stafford/>



Useful Resources:



Nottinghamshire Healthcare
NHS Foundation Trust



TINY HAPPY
PEOPLE

NSPCC



Nottinghamshire
County Council



THE CHURCH
OF ENGLAND

Diocese of Southwell & Nottingham



NottsNarpo

Welcome to the web site of the Nottinghamshire branch of the
National Association of Retired Police Officers

Book of Condolences

April 2017

#St.EdSUPPORT:

If you need to chat
this Time To Talk Day



0300 102 1234
Open 9am-6pm weekdays

SAMARITANS

116 123
Always open



0800 58 58 58
Open 5pm - midnight

If you're in Wales:



0800 132 737
Always open

If you're under 25:



Text THEMIX
to 85258
Always open

Share and save this post



Mind
6 Feb •

It can be uncomfortable to open up and share how we're really feeling. But talking openly and honestly can be the first step towards better mental health for everyone.

Time to Talk Day is the nation's biggest mental health conversation. Each year, it helps friends, families, communities and workplaces to have millions of conversations about mental health across the UK.

This Time to Talk Day, we're asking people to get comfortable and start talking about mental health. So if you find yourself fancying a brew, perhaps talk it through. [Co-op Rethink Mental Illness](#) [#TimeToTalk](#)

NottAlone
It's OK not to be OK



How
are you,
really?

Local mental health
advice and help
for young people
in Nottingham and
Nottinghamshire, with
support for parents too.

nottalone.org.uk
[#NottAlone](#)

#STED-SUPPORT

Home > Key Information > #STED-SUPPORT

At St. Edmund's CofE Primary and Nursery School, we prioritise the well-being of our students and their families.

Introducing #StEdmundsSUPPORT, our dedicated team is committed to providing excellent support for both children and parents/carers alike.

We uphold our Sixness Values of **compassion, perseverance, responsibility, respect, truth and truth, and justice and forgiveness** in all that we do.



We understand that parenting can sometimes be challenging, and we're here to help. Our experienced staff are always available to address your questions, concerns, and provide guidance whenever you need it. While face-to-face meetings may not always be possible, we have curated a range of valuable resources and links on this page to support you.

Whether you're seeking advice, information, or access to external agencies, our #StEdmundsSUPPORT resources aim to empower you with the knowledge and tools to navigate any situation. We believe that by fostering a strong partnership with parents and carers, we can help our children thrive and reach their full potential.

Let us provide you with even better support at St. Edmund's CofE Primary and Nursery School.

Who's Who?



Mrs Hird-Shaw: Senior Mental Health Lead



Mrs Walker: ELSA Practitioner

#StEdSUPPORT Resources:



Nottinghamshire
County Council

Nottinghamshire
Family Hub Network



Helping families get the right support at the right time



<https://www.st-edmunds.notts.sch.uk/sted-support/>



Friend's Of St. Edmund's

Friend's of St Edmund's are a Parent Group that exists to raise and use funds to enrich the school experience of St Edmund's Primary & Nursery School pupils.

What an opportunity!

In the new term, Friends for St. Edmund's are holding a competition...they are looking for a new logo and we need the children's help! The lucky winner will have their design digitalised and then selected to be the new logo that identifies Friends of St. Edmund's! Keep an eye out for the design template...



Coming soon...

To join this wonderful team, please contact the school office for more information:

01623 646624

Events:

Valentines Disco

Join us for a Fun-Filled Valentine's Disco!

Date: Wednesday, 12th February

Entry Fee: £3.00 per child – Please make payments in cash on arrival.

Time:
Foundation 2 & Key Stage 1: 3:15 PM - 4:15 PM
Key Stage 2: 4:30 PM - 5:30 PM

Tuck Shop Available:
For Year 3, Year 4, Year 5 & Year 6
Extra sweets available for purchase (bring extra money if desired)

Come along and enjoy music, dancing, and fun! Let's celebrate Valentine's Day together with plenty of joy and laughter. Don't forget to bring your dancing shoes!

We look forward to seeing you there!

Learning through faith, we dream, believe and achieve.



doodlelearning
discover possible



Congratulations to our Top Doodlers...



26813 questions answered
Average question time: 17 seconds
Hours of practice*: 127

*The total time spent by students at St Edmund's CofE (C) Primary School on their personal work programs over the last twelve months, excluding time spent on games or other features in the app.

25532 questions set by Proxima*
1281 questions set by staff at St Edmund's CofE (C) Primary School**

*The in-built algorithm Proxima™ powers each individual's work program, setting questions exactly tailored to their level, strengths and weaknesses.

**Additional questions set by the class teacher using the Assignments feature.



117 current active students
Students who have completed exercises in the last month.



doodle

Discover thousands of questions...
to suit all types of learner!

doodle

Promotes independent learning!

By setting work at just the right level, Doodle lets all children work **without supervision**, helping to boost their confidence and resilience.

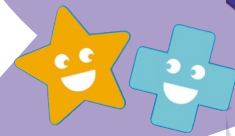
doodle

doodlelearning

“Dear creator of doodle learning,
I just wanted to say **I love your app!**
Now my mum doesn't need to
tell me to do maths.”

— Child user

doodle



Get started with Doodle



1. Scan the QR code to download the free apps and get logged in using the login information provided by your child's class teacher



2. Once logged in, create a parent account to track your child's progress. Press the arrow and select Settings > Parent details.

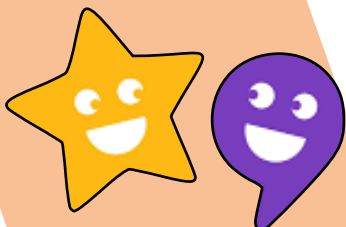


3. Use the DoodleConnect app or visit parents.doodlelearning.com regularly to keep up to date with your child's progress.



Click the green chat icon on the website to speak to our Parent Support Team or visit help.doodlelearning.com for help articles.

doodlelearning
By Discovery Education





St. Edmund's Church:

A fantastically friendly church in the heart of
Mansfield Woodhouse

12 Fri 20 Dec

St. Ed's Church Mansfield Woodhouse



St. Ed's Church Mansfield Woodhouse

70 likes • 119 followers

St. Edmund's, a fantastically friendly Church in the heart of Mansfield Woodhouse.

Following

Send Email

Posts About Photos Mentions

Details

Page · Church

Church Street

+44 1623 629665

office@stedschurch.org.uk

st.edschurch_mw



Our vision here at St. Ed's

Our Vision at St. Ed's is to bring God's heart to the heart of the community. We don't believe that we take God out into the community, rather that we go out into the community and join in with what he is already doing

St. Ed's has been embedded in the heart of the community for over 700 years. Today we engage with our community in lots of different ways; providing affordable clothes and household items through our charity shop, The Partnership, which donates profits to local, national and international charities. We provide great, affordable food and a welcoming warm space in our Stable Centre Café. We host and run the Trussell Trust Sherwood Forest Foodbank to meet the needs of those who have fallen on harder times in our community. We seek to support local schools and families. And we seek to support all who come to us to mark life's events from cradle to grave. Whether you are rejoicing, grieving, anxious or simply trying to take one day at a time we welcome you

Through all of these things we bring the love of Jesus to the community and have opportunities for people to find out more about the Christian faith through attending one of our Alpha Courses

St. Ed's is part of the Diocese of Southwell and Nottingham. As we grow forward into the future we will be following the Diocesan vision of 'Growing Disciples of Christ with Compassion, Confidence and Courage'



Opening Times

| Sunday | Monday | Tuesday | Wednesday | Thursday | Friday | Saturday |
|--------|----------------------|---------|-----------------------|----------------------|--------|----------|
| Closed | 1:30pm-4:00pm | Closed | 10:30am-12:30pm | 1:30pm-3:45pm | Closed | Closed |
| | St. Ed's Turner Hall | | St. Peter's Mansfield | St. Ed's Turner Hall | | |

Events:

| Sun | Mon | Tue | Wed | Thu | Fri | Sat |
|-----------------------------|-----|------------------------------|-----------------------------------|--------------------|-------------------|-----|
| 23 Holy Com... + 2 | 24 | 25 Little tEds ... + 3 | 26 Zoom Pra... Cameo Gr... | 27 Small Gro... | 28 Flea Market | 1 |
| 2 Holy Com... Alight | 3 | 4 Little tEds ... + 3 | 5 Zoom Pra... Mothers' U... | 6 Small Gro... | 7 Flea Market | 8 |
| 9 Morning P... Alight | 10 | 11 Little tEds ... + 3 | 12 Zoom Pra... Cameo - L... | 13 Small Gro... | 14 Flea Market | 15 |
| 16 Holy Com... Alight | 17 | 18 Little tEds ... + 4 | 19 Zoom Pra... Cameo Gr... | 20 Small Gro... | 21 Flea Market | 22 |
| 23 Holy Com... + 2 | 24 | 25 Little tEds ... + 3 | 26 Zoom Pra... Cameo Gr... | 27 Small Gro... | 28 Flea Market | 29 |
| 30 Alight | 31 | 1 Little tEds ... + 3 | 2 Zoom Pra... Mothers' U... | 3 Small Gro... | 4 Flea Market | 5 |



<https://www.stedschurch.org.uk/what-s-on>



[https://
www.facebook.com/
profile.php?
id=61553968214035](https://www.facebook.com/profile.php?id=61553968214035)

Missed Letters:



<https://www.st-edmunds.notts.sch.uk/letters-home/>



Staying Informed: Accessing Important School Letters

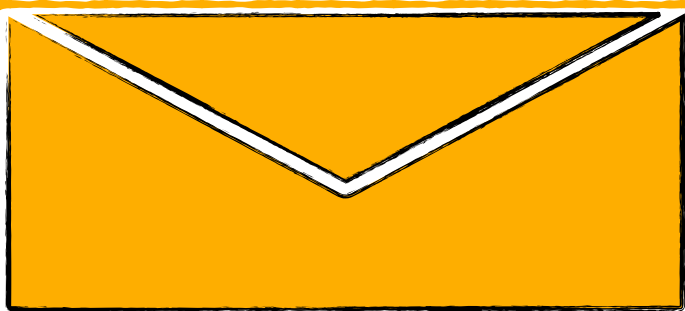
We understand that keeping track of all school communications can be challenging. To ensure you don't miss any important information, we have created a dedicated page on our school website where we upload all letters sent home to families.

This page serves as a central hub for all official school correspondence, including:

- **Important notices:** Upcoming events, school closures, and other critical information.
- **Curriculum updates:** Information about your child's learning, including termly newsletters and subject overviews.
- **Trip information:** Details about upcoming school trips, including consent forms and payment information.
- **Homework information:** Reminders and important deadlines for upcoming homework assignments.
- **PTA letters and information:** Important updates from the Parent Teacher Association, including details about upcoming events, fundraising activities, and volunteer opportunities.
- **Policy documents:** Easy access to important school policies, such as our behaviour policy and uniform guidelines.

We encourage you to visit this page regularly to stay informed about all aspects of school life.

Remember: This page complements our other communication channels, including the Arbor app and our Facebook page.





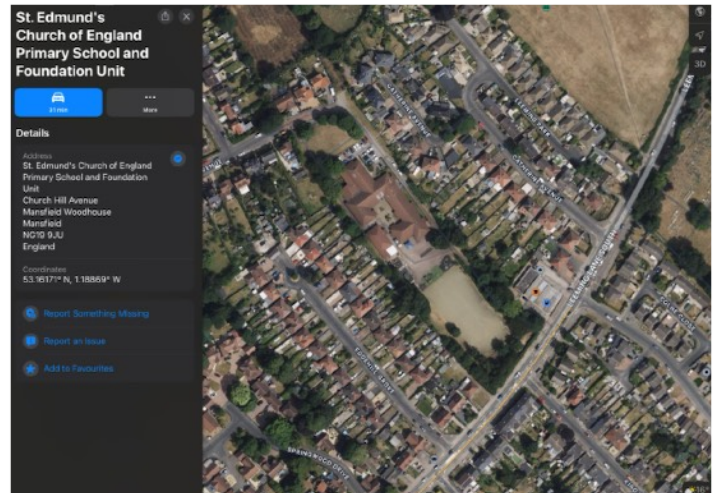
Contact Details:

We believe that our school offers a unique and nurturing environment where children can thrive academically, socially, and spiritually. Our focus on excellence, innovation, and pastoral care ensures that our pupils are well-prepared for their 'flourishing' future success.

#BeaconofExcellence #St.Eddies #SixcessValues #community

Address:

St. Edmund's CofE Primary & Nursery School
Church Hill Avenue
Mansfield Woodhouse
Nottinghamshire
NG19 9JU



www.st-Edmunds.notts.sch.uk



01623 646624



office@st-edmunds.notts.sch.uk



Follow us... (If you like) 👍



Arbor

Like

Share

Follow

*Please make sure that your contact details are up-to-date on arbor