



Issue:

#2

Term:

Autumn

Date:

November 2024

Diary Dates:

Monday	Tuesday	Wednesday	Thursday	Friday	Saturday	Sunday
				1 Catholic Day of Prayer	2	3
4	5	6 St. Edmund's Day	7 St. Edmund's Day	8 St. Edmund's Day	9	10
11 St. Edmund's Day	12 St. Edmund's Day	13 St. Edmund's Day	14 St. Edmund's Day	15 St. Edmund's Day	16	17
18	19 St. Edmund's Day	20	21	22	23	24
25 St. Edmund's Day	26	27	28 St. Edmund's Day	29	30	

Found here: [School Calendar](#)

Key dates can be found on the
school website calendar.

Perfection is
not attainable,
but if we chase
perfection we can
catch excellence.

— VINCE LOMBARDI

BRIAN TRACY
INTERNATIONAL

Headteacher Message:

As we conclude the second half of our autumn term, I am filled with pride and gratitude for the vibrant activities and accomplishments we have celebrated at St. Edmund's CofE Primary School. This term has been marked by exceptional engagement, both within our school and the wider community, and I would like to take a moment to reflect on these highlights and express my heartfelt thanks.

Our young Collective Worship Leaders returned from their training at the Diocese of Nottingham and Southwell with renewed zeal and innovative ideas. Their commitment to enhancing our Christian ethos is truly commendable, and we eagerly anticipate the positive contributions they will make to our collective worship sessions.

As we look forward to the new year, we warmly bid farewell to staff members Hannah, Victoria, and Tilly. Their contributions have been invaluable, and they will be missed. Thank you for your unwavering support and for being such an integral part of our school community.



Wishing all of you a very merry Christmas and a Happy New Year.

I look forward to welcoming you back for more exciting adventures in the coming year...

With warm regards

Mr Anthony Bandy-Webb



Vision, Aims & Values:

At St. Edmund's C of E Primary and Nursery School, we aspire to be a beacon of excellence, a vibrant and welcoming Christian community where all children flourish spiritually, academically, socially, and emotionally. Inspired by the teachings of the Bible, we foster a culture of curiosity, creativity, compassion, and service. Here, every child is known, valued, and empowered to become a confident, responsible, and thriving individual who makes a positive impact on the world.

By educating for life in all its fullness, we are preparing our students for a bright future. We believe that our pupils will be confident, resilient, and well-rounded individuals who are ready to make a positive impact on the world.

A #StEDDIE is a proud member of our school community who embodies our Christian values in all aspects of their life.

'Sixcess' Values:

Our 'Sixcess' Values underpin everything we do at St. Edmund's. They are the guiding principles for our relationships, learning, and actions.

Respect: We treat everyone with dignity and kindness, valuing diversity and celebrating individuality.

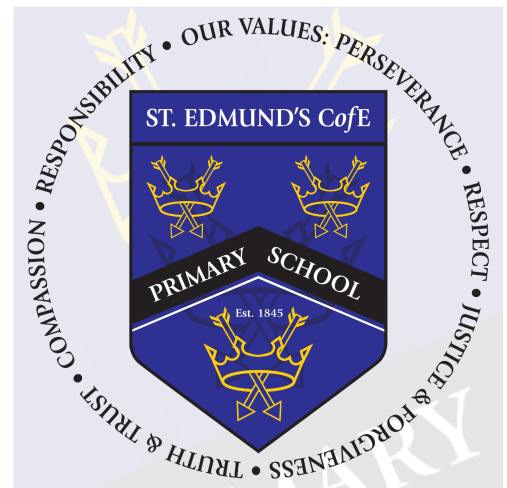
Responsibility: We are accountable for our actions and choices, demonstrating reliability and self-discipline.

Perseverance: We approach challenges with determination and resilience, learning from setbacks and striving for excellence.

Truth and Trust: We build strong relationships based on honesty, integrity, and reliability.

Justice and Forgiveness: We promote fairness, equality, and compassion, seeking to reconcile and restore relationships.

Compassion: We show empathy and care for others, demonstrating kindness and generosity of spirit.



Together, inspired by Christian values, we embark on a journey to discover life in all its fullness, equipping our children to flourish and leave their positive mark on the world.

School Expectations:



Our School Expectations:

Our behaviour policy is underpinned by our Christian values of **respect**, **truth and trust**, **compassion**, **responsibility**, **justice and forgiveness**, and **perseverance**. These values are integral to creating a positive and nurturing learning environment where all pupils feel safe, valued, and empowered to reach their full potential.

Parents and carers:

Parents and carers, where possible, should:

- * Support their child in adhering to the school's behaviour policy
- * Inform the school of any changes in circumstances that may affect their child's behaviour
- * Discuss any behavioural concerns with the class teacher promptly
- * Take part in any pastoral work following misbehaviour (for example, attending reviews of specific behaviour interventions)
- * Raise any concerns about the management of behaviour with the school directly, while continuing to work in partnership with the school
- * Take part in the life of the school and its culture

5 Pillars of Pivotal Practice:



The school will endeavour to build a positive relationship with parents and carers by keeping them informed about developments in their child's behaviour and the school's policy, and working in collaboration with them to tackle behavioural issues.

Ready to learn;

Respectful of themselves and others;

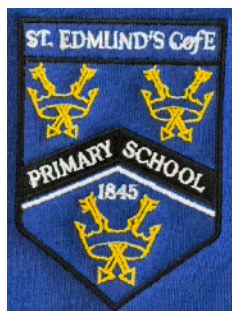
Responsible in school

Drawing upon the Church of England's values and aims for flourishing schools, we believe in:

- Educating for Dignity and Respect: Promoting the inherent dignity and value of every person, created in the image of God. We celebrate diversity and encourage children to treat everyone with kindness, compassion, and respect.



School Uniform:



Our children wear:	PE Kit
<ul style="list-style-type: none"> • Polo shirts, shirts or blouses in white or blue • Sweatshirts, cardigans or jumpers in royal blue • Long trousers or shorts in grey or black • Knee-length skirts in grey or black • Pinafore dresses in blue • Socks and/or tights in white, grey or black • Black shoes or plain black/grey trainers with no logos (sensible boots may also be worn in bad weather) • All shoes must have a low heel 	<ul style="list-style-type: none"> • Plain white or blue t-shirt, or a t-shirt with our school logo • Shorts/tracksuit bottoms in blue or black • Sensible trainers for outdoor use or plimsolls • Tracksuit top or jumper in blue or black <p><u>Jewellery</u></p> <p>Jewellery is not to be worn by pupils in school.</p>
<p>School uniform does not have to have our logo on it. You are very welcome to purchase non-branded uniform from a supermarket or other supplier, as long as the colours match ours.</p>	<p>On the day that your child has PE, they should come to school in their PE kit instead of their usual school uniform. This saves time with getting changed in school and also avoids items of clothing getting lost.</p>

For branded school uniform, check out this website: myclothing.com



News 1: A visit from Mr Yemm (MP)



We were thrilled to welcome Steve Yemm, our local Member of Parliament, to St. Edmund's CofE Primary School. During his visit, Mr. Yemm engaged with our school parliament, discussing important issues and sharing his insights. He also had the opportunity to meet with parents on the courtyard, where he listened to their concerns and aspirations for our school community.

In addition to these meetings, Mr. Yemm spoke with Mr. Bandy-Webb about our technology infrastructure. This discussion was crucial as we continue to enhance our digital capabilities to support learning and innovation.



Exciting Opportunity for Our School Council

Some of our dedicated school council members were fortunate enough to attend a presentation by Mr. Yemm at West Notts College. This experience allowed them to learn more about his role in Parliament and gain valuable insights into how they can contribute to the community beyond their school.

News 2: Collective Worship Leaders:

Our young Collective Worship Leaders recently embarked on an inspiring training program at the Diocese of Nottingham and Southwell. The experience was transformative, and they returned to school brimming with enthusiasm and innovative ideas.

These leaders are now eager to enhance our Christian distinctiveness within the school community. Their dedication and passion will undoubtedly play a significant role in fostering a nurturing and spiritually enriching environment for all students.

We look forward to seeing the positive impact of their training and are excited about the future of our Collective Worship sessions.



News: Reading Advent

Welcome to our Reading Advent, where we passionately celebrated the joy of reading and the enchanting magic of Christmas!

Each day, we shared a special Christmas story with you, filled with warmth and wonder.

As we eagerly countdown to Christmas, we hoped these daily readings would ignite a passionate love of books and stories in everyone.

So, wrap yourself in a cosy blanket, sip on a warm drink, and let your heart soar on this magical reading journey...

#beaconofexcellence #sixcessvalues #Christmas

Some of our readers have achieved over 1000 views on our social media platform!!

St. Edmunds CofE Primary & Nursery School

ST. EDMUND'S CofE
PRIMARY SCHOOL
Est. 1849

Day 6: A Snowy Adventure with Rupert

Join us today as Rupert, a bright and enthusiastic Year 3 student, takes us on a snowy adventure with "Say Hello to the Snowy Owls" by Ian Whybrow. This charming tale follows a young owl as he explores the winter wonderland, learning about the beauty and wonder of the season.

Let's celebrate the magic of winter and the joy of reading together!

Learning through faith, we dream, believe and achieve.

St. Edmunds CofE Primary & Nursery School

ST. EDMUND'S CofE
PRIMARY SCHOOL
Est. 1849

Day 11: A Peter Rabbit Christmas with Hannah

Join us today as Hannah, a talented Year 4 student, reads "Peter Rabbit's Christmas Wish." This delightful story follows Peter Rabbit on a heartwarming Christmas adventure, filled with friendship, family, and festive fun.

Let's celebrate the magic of Christmas and the joy of reading together!

Learning through faith, we dream, believe and achieve.

News: New Sports Kit:

We were thrilled to announce the arrival of our brand-new sports kit, generously donated and sponsored by Octopus Energy! This exciting development not only enhances our athletic experience but also showcases our school spirit with our logo proudly printed on each piece.

We extend our heartfelt appreciation to Octopus Energy for their incredible support. Their contribution will undoubtedly inspire our students to excel in their sports activities and represent our school with pride.

Stay tuned for more updates and opportunities to showcase our new kit in action. Let's come together to support our athletes and celebrate this wonderful partnership!





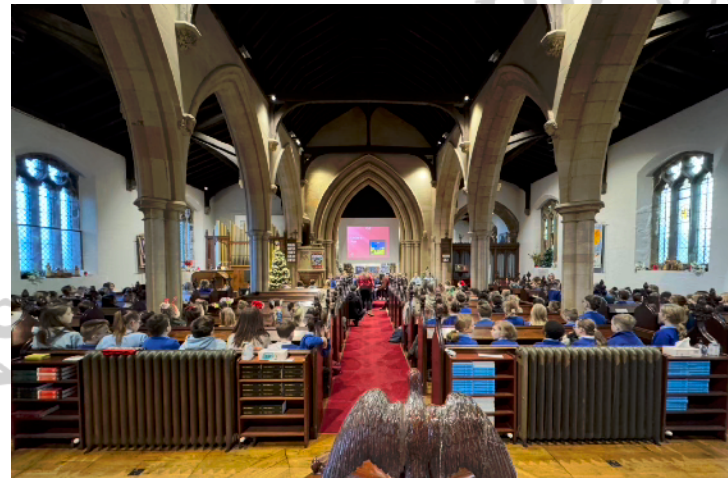
News: Church Service:

Our annual Christmas Carol Service at St. Edmund's Church was a resounding success! It was heartwarming to see so many members of our school community come together to celebrate the true meaning of Christmas. The service was filled with beautiful carols, readings, and a sense of shared joy.

The children's singing was simply amazing, filling the church with festive cheer. A special mention must go to our Year 6 pupils, who led the service with remarkable maturity and grace. Their leadership truly enhanced the experience for everyone.

Thank you to Reverend Porter and Kathy and the church community for hosting us, and to all the staff, children, and families who made the morning so memorable.

We wish you a very Merry Christmas!



News: The Nativity!

Hold onto your hats, folks! Our Early Years Foundation Stage (EYFS) nativity was a whirlwind of emotions, and we mean it in the best way possible.

Picture this: a stage filled with tiny angels, shepherds, and even a few wise men who seemed to have borrowed their robes from a particularly generous department store. The cuteness factor was off the charts, and we're pretty sure some of the parents were secretly bouncing along to the songs, trying to keep up with the energy of their little performers.

A special acknowledgement to the teachers who spent countless hours rehearsing and perfecting the performance, we salute you! You deserve a medal— or at least a very long nap!



News: Our litter-picker heroes:

We are thrilled to highlight the incredible efforts of our Eco Team, who have been diligently litter picking along the footpath next to our school. Their dedication and hard work have not gone unnoticed, as they have uncovered a variety of items, including some barbed wire, a petrol can, and even a mat!

The Eco Team's commitment to keeping our community clean and tidy is truly admirable. They embody the spirit of our #EcoWarriors and continue to be a beacon of excellence, reflecting our six success values.

We extend our heartfelt appreciation to each member of the Eco Team for their outstanding contributions and for setting a positive example for all of us. Keep up the fantastic work!



News: KS2 Girls Shine:

We are immensely proud of our KS2 girls who recently showcased their ambition and talent at the 'This Girl Can' festival. The event was a fantastic opportunity for them to hone their football skills and participate in exciting small-sided games. Their dedication and hard work were evident, and they thoroughly enjoyed the experience. This festival not only highlighted their passion for sports but also inspired them to pursue their goals with confidence and enthusiasm. Well done, girls!





News: We remained open...

This term, saw some very wintry weather descend upon us, and we know that many schools in the local area were unfortunately forced to close. Here at St. Edmund's, we were determined to remain open, and thanks to the incredible efforts of our dedicated site team, we were able to do just that!

Our site team worked tirelessly, battling the elements to ensure that the school grounds were safe and accessible for everyone. They cleared paths, gritted surfaces, and made sure that the school was a warm and welcoming environment for our children.

We know that consistency and routine are incredibly important for children's learning and wellbeing. Being in school provides not only essential learning time but also crucial social interaction with friends and teachers. While we understand that sometimes school closures are unavoidable, we believe that remaining open whenever possible is vital for our children's education and overall development. We were therefore delighted that, despite the challenging weather, we were able to welcome our pupils and continue with our learning journey.



News: Top Doodlers!

We are thrilled to share some exciting news about the introduction of our new online learning platform, Doodle Learning! As you know, we're always looking for innovative ways to support our children's learning and development. In just over a month of our trial period, an impressive 158 pupils have already embraced the platform, collectively answering a staggering 10,763 questions! This demonstrates a fantastic level of engagement and enthusiasm from our children.

Research shows that even just 10 minutes of daily practice on Doodle Learning can lead to accelerated progress in key subjects. The platform's adaptive technology personalises the learning experience for each child, focusing on their individual strengths and areas for development. This means that every child is challenged at the right level, ensuring they make consistent progress and build confidence in their abilities.



We encourage all our pupils to make the most of this fantastic resource. Whether it's a quick 10-minute session before school, after dinner, or during a quiet moment at the weekend, regular use of Doodle Learning can make a significant difference to their learning journey.

News: Goodbyes:

Your unwavering support for our parents and your nurturing approach to all our pupils have created a positive and caring environment that has fostered the growth and development of countless children in your care.

Your commitment to our school values and your passion for education have been an inspiration to us all.

As you embark on this new chapter in your career, we wish you all the best. We are confident that you will continue to provide a nurturing and kind environment for children, and we know that you will make a positive impact wherever you go - showing other children 'the St.EDDY way!'

I'm sure I say this in behalf of our whole community...
THANK YOU!

Miss Pembury



News: Goodbyes:

Your passion for education and your commitment to supporting children with Special Educational Needs have been an inspiration.

A journey from a Newly Qualified Teacher to a valued member of our Senior Leadership Team, SENCO, and Early Years Practitioner Lead is a testament to your hard work, dedication, and professional development.

As you embark on this exciting new chapter in your career as an Assistant Headteacher at a SEND school, we wish you all the best. We know that your passion, expertise, and leadership skills will make a significant difference in the lives of the children and staff at your new school.

Thank you again for everything you have done for St. Edmund's. We will miss you dearly,

Mrs Chandler



News: True St.EDDIES:



We wanted the children to show Mrs Pembury and Mrs Chandler just how much of a #StEDDY we think they are....

News: A sticker (or more) proves it...:



A Warm Welcome to Miss Blount!

We are delighted to announce that Miss Blount will be joining the Reception Class team from January!

Miss Blount is a passionate and enthusiastic educator with a wealth of experience. Prior to becoming a teacher, she excelled in competitive cheerleading and gymnastics, demonstrating dedication, teamwork, and a strong work ethic for around a decade.

She began her teaching journey as a highly valued Teaching Assistant, showcasing her commitment to supporting children's learning and development. Inspired by this experience, Miss Blount pursued her dream of becoming a qualified teacher.

We were particularly impressed by Miss Blount's connection with our School Parliament during the interview process. Her enthusiasm and engaging personality shone through, and we are confident she will be a wonderful addition to the St. Edmund's family.

Please join us in giving Miss Blount a warm welcome to our school!

In addition, we would also like to congratulate Miss Scott on her appointment as our new EYFS/KS1 Leader! Miss Scott's dedication to early years education and her strong leadership skills make her an ideal fit for this important role. We are confident that she will continue to inspire and support our youngest learners as they embark on their educational journey.





Attendance:

Face-to-face education is important in helping pupils to fulfil their potential.

During school time, we believe pupils should be in class with their teachers and peers and enjoying all the benefits that brings.

Parents or carers of a child(ren), have a legal responsibility to ensure their child receives a suitable education. This is usually achieved through regular attendance at school.

For more information: [DfE: Importance of attendance](#)

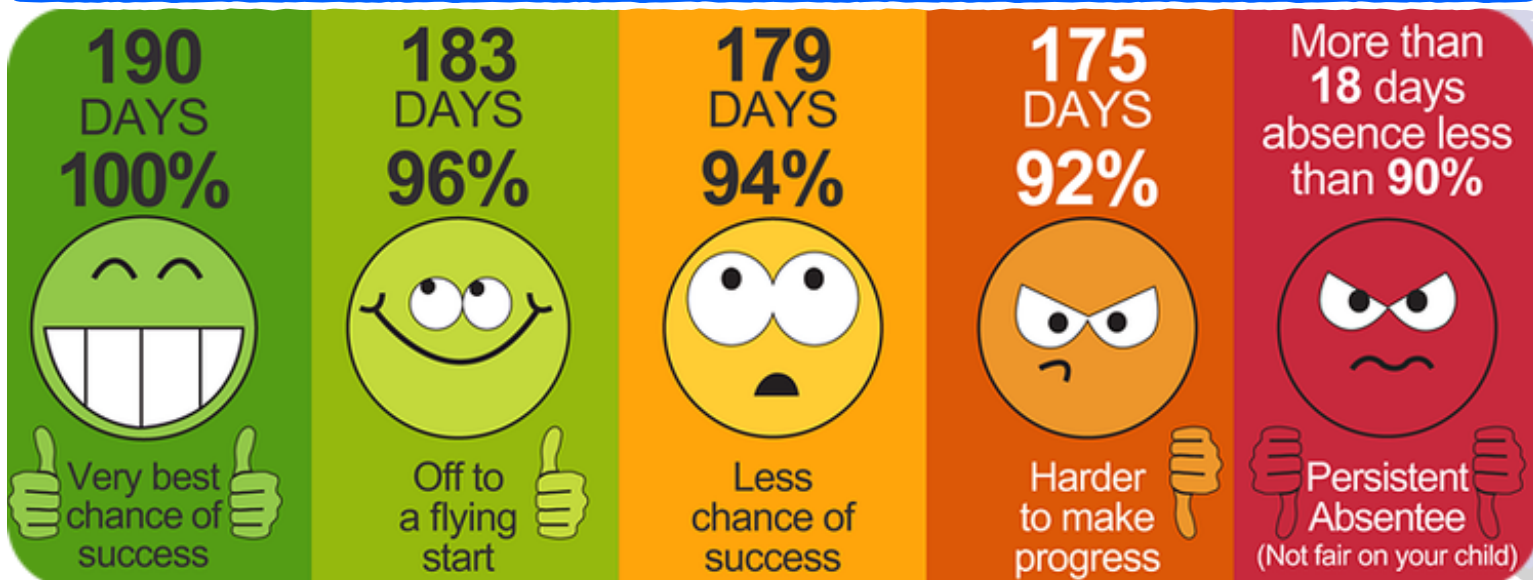
**School
Target:**

96%

School vs National Data:



We're delighted to share that our school attendance from September 9th to October 14th has achieved an impressive +1.1% score compared to the national average (Year to Date ((YTD))). This is a fantastic accomplishment that reflects the commitment of our pupils, staff, and parents to ensuring regular attendance. Please keep it up, if we can... 👍



Other News: Oh Yes It Was! A Fantastic Pantomime!



A huge "Fee, Fi, Fo, Fum!" of thanks goes out to M&M Theatrical Productions for bringing their fantastic production of "Jack and the Beanstalk" to our school today! The children (and staff!) were thoroughly entertained by this energetic and engaging performance. From shouting "He's behind you!" to cheering on Jack, the children were completely captivated by the story. The interactive nature of the pantomime made it a truly memorable experience for everyone, and it was wonderful to see so many smiling faces. A big thank you to M&M Theatrical Productions for a truly magical morning!

Useful Resources:



Nottinghamshire Healthcare
NHS Foundation Trust



TINY HAPPY
PEOPLE

NSPCC



Nottinghamshire
County Council



THE CHURCH
OF ENGLAND

Diocese of Southwell & Nottingham

Final Words:

We would like to express our sincere gratitude to our dedicated staff, our talented children, and to you, our parents and families, for your continued support. Your partnership is invaluable to us.

May you all have a blessed and peaceful Christmas.





Friend's Of St. Edmund's

Friend's of St Edmund's are a Parent Group that exists to raise and use funds to enrich the school experience of St Edmund's Primary & Nursery School pupils.

What an opportunity!

In the new term, Friends for St. Edmund's are holding a competition...they are looking for a new logo and we need the children's help! The lucky winner will have their design digitalised and then selected to be the new logo that identifies Friends of St. Edmund's! Keep an eye out for the design template...



Coming soon...
(January 2025)

To join this wonderful team, please contact the school office for more information:

01623 646624

Events:

We were thrilled to share the wonderful news about our recent Christmas Market event. For the first time ever, one of our PTA events had raised over £1000! This is a fantastic achievement, and we couldn't have done it without your support and participation.

Because of the terrible weather forecast, we decided to hold the market indoors for the first time. Despite this change, the event was highly attended, and we are grateful for your patience and understanding.

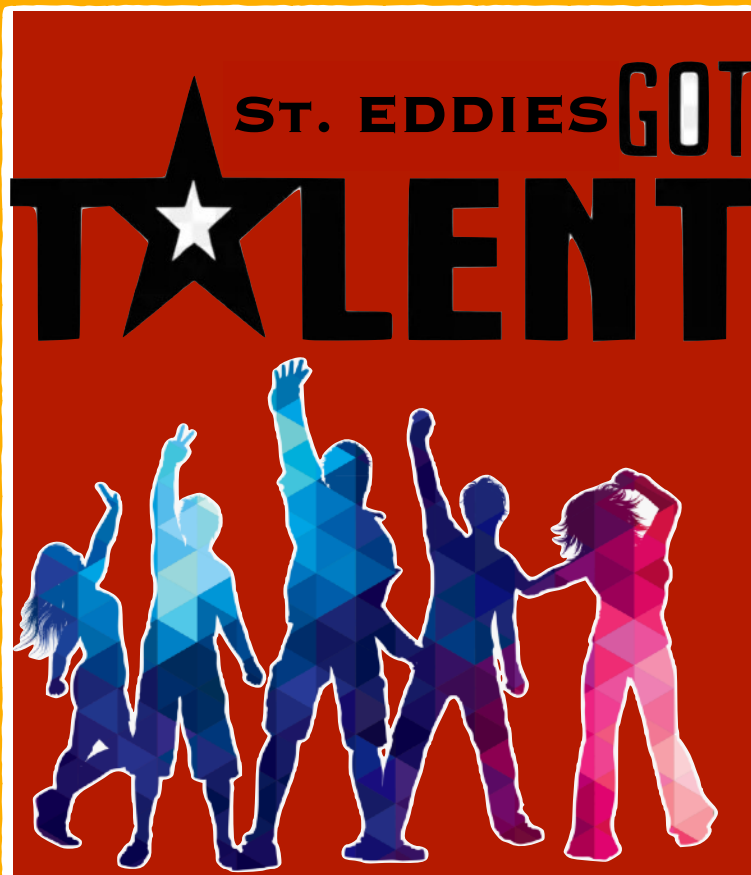
A Big Thank You!

Once again, we want to express our heartfelt thanks to everyone who contributed to the success of the Christmas Market. Your efforts and enthusiasm made it a truly memorable event for all of us.

Looking forward to more exciting activities together!



News: Coming Soon...



Get ready to be amazed!

St. Edmund's is bursting with hidden talents, and we're thrilled to announce the return of our spectacular **St. Eddies Got Talent** show!

Whether it's singing, dancing, playing an instrument, acrobatics, comedy, or something completely unique, we want to see it all!

Keep an eye out for more details coming soon, including audition dates, categories and how to get involved...

This is a fantastic opportunity for our children to shine, build confidence, and have a whole lot of fun.

We can't wait to see what incredible performances await us!

#StEddiesGotTalent #schoolparliament #sixcess

News: Parent Drop-in sessions...



- **Phonics Drop-in Sessions:** Join us for informal sessions to learn more about phonics teaching and how to support your child's reading at home. These sessions are available for Reception and Key Stage 1.
- **Year 4 Multiplication Tables Check:** We'll be holding a dedicated session to discuss the Year 4 Multiplication Tables Check (MTC) and how you can help your child prepare.
- **Year 6 SATs Information Meeting:** An important meeting for parents of Year 6 pupils, providing valuable information about the upcoming SATs assessments.

For full details on dates, times, and locations for all of these events, please refer to our school website calendar. You can also find further information on our communication platform, Arbor.



St. Edmund's Church:

A fantastically friendly church in the heart of
Mansfield Woodhouse

12 Fri 20 Dec

St. Ed's Church Mansfield Woodhouse



St. Ed's Church Mansfield Woodhouse

70 likes • 119 followers

St. Edmund's, a fantastically friendly Church in the heart of Mansfield Woodhouse.

Following

Send Email

Posts About Photos Mentions

Details

Page · Church

Church Street

+44 1623 629665

office@stedschurch.org.uk

st.edschurch_mw



Our vision here at St. Ed's

Our Vision at St. Ed's is to bring God's heart to the heart of the community. We don't believe that we take God out into the community, rather that we go out in to the community and join in with what he is already doing

St. Ed's has been embedded in the heart of the community for over 700 years. Today we engage with our community in lots of different ways; providing affordable clothes and household items through our charity shop, The Partnership, which donates profits to local, national and international charities. We provide great, affordable food and a welcoming warm space in our Stable Centre Café. We host and run the Trussell Trust Sherwood Forest Foodbank to meet the needs of those who have fallen on harder times in our community. We seek to support local schools and families. And we seek to support all who come to us to mark life's events from cradle to grave. Whether you are rejoicing, grieving, anxious or simply trying to take one day at a time we welcome you

Through all of these things we bring the love of Jesus to the community and have opportunities for people to find out more about the Christian faith through attending one of our Alpha Courses

St. Ed's is part of the Diocese of Southwell and Nottingham. As we grow forward into the future we will be following the Diocesan vision of 'Growing Disciples of Christ with Compassion, Confidence and Courage'



Opening Times

Sunday	Monday	Tuesday	Wednesday	Thursday	Friday	Saturday
Closed	1:30pm-4:00pm	Closed	10:30am-12:30pm	1:30pm-3:45pm	Closed	Closed
	St. Ed's Turner Hall		St. Peter's Mansfield	St. Ed's Turner Hall		

Events:

< January 2025 >

Today

Sun	Mon	Tue	Wed	Thu	Fri	Sat
29 Joint Holy ...	30	31	1	2	3	4
5 Holy Com... Alight	6	7 Little tEds ... + 3	8 Zoom Pray... + 3	9	10 Flea Market	11
12 Morning P... Alight	13	14 Little tEds ... + 3	15 Zoom Pra... Small Gro...	16	17 Flea Market	18
19 Joint Cove...	20	21 Little tEds ... + 4	22 Zoom Pra... + 2	23	24 Flea Market	25
26 Holy Com... + 2	27	28 Little tEds ... + 3	29 Zoom Pra... Small Gro...	30	31 Flea Market	1



<https://www.stedschurch.org.uk/what-s-on>



[https://
www.facebook.com/
profile.php?
id=61553968214035](https://www.facebook.com/profile.php?id=61553968214035)



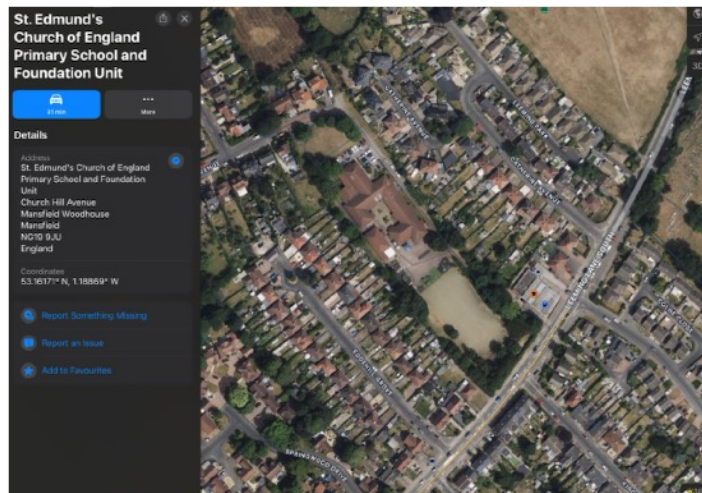
Contact Details:

We believe that our school offers a unique and nurturing environment where children can thrive academically, socially, and spiritually. Our focus on excellence, innovation, and pastoral care ensures that our pupils are well-prepared for their 'flourishing' future success.

#BeaconofExcellence #St.Eddies #SixcessValues #community

Address:

St. Edmund's CofE Primary & Nursery School
Church Hill Avenue
Mansfield Woodhouse
Nottinghamshire
NG19 9JU



www.st-Edmunds.notts.sch.uk



01623 646624



office@st-edmunds.notts.sch.uk



Follow us... (If you like) 👍



Arbor

Like

Share

Follow

*Please make sure that your contact details are up-to-date on arbor