



Issue:

#2

Term:

Autumn

Date:

November 2024

Diary Dates:

Monday	Tuesday	Wednesday	Thursday	Friday	Saturday	Sunday
				1 Catholic Day School	2	3
4	5	6 St. Edmund's CofE Primary School	7 St. Edmund's CofE Primary School	8 St. Edmund's CofE Primary School	9	10
11 St. Edmund's CofE Primary School	12 St. Edmund's CofE Primary School	13 St. Edmund's CofE Primary School	14 St. Edmund's CofE Primary School	15 St. Edmund's CofE Primary School	16	17
18	19 St. Edmund's CofE Primary School	20	21	22	23	24
25 St. Edmund's CofE Primary School	26	27	28 St. Edmund's CofE Primary School	29	30	

Found here: School Calendar

Key dates can be found on the
school website calendar.

"In any given
moment we have
two options: to step
forward into growth
or step back
into safety."

ABRAHAM MASLOW



Headteacher Message:

As we continue to enjoy our half term and start to look forward to Autumn Term 2, I hope everyone is having a restful and rejuvenating break...?

As we embark on Autumn 2, we look forward to celebrating the festive season with a variety of exciting events. Our annual Christmas Market will be filled with festive cheer, delicious treats, and handcrafted gifts. We'll also be hosting a dazzling pantomime that will delight our school audience of all ages. Plus, I can't wait to see the school's Nativity performance, which will always provide the #cutefactor !

In addition to these festive events, we have many other exciting activities planned for the term, such as our Autumn Disco. Keep an eye on our Communication platforms (Arbor) and the school calendar for more details.

I have thoroughly enjoyed getting to know our #St.EDDIES this half term - they have really made me feel welcome and excited about the journey moving forwards...

As previously mentioned at our Harvest Festival, I have been at St. Edmund's now for around 6 weeks - and I would like to reiterate my appreciation and thanks; I have loved being the new headteacher of this wonderful school and I thank you all for welcoming me into your community - it really does mean a lot.

By working together, we can continue to ensure that our children reach their full potential.





Vision, Aims & Values:

At St. Edmund's C of E Primary and Nursery School, we aspire to be a beacon of excellence, a vibrant and welcoming Christian community where all children flourish spiritually, academically, socially, and emotionally. Inspired by the teachings of the Bible, we foster a culture of curiosity, creativity, compassion, and service. Here, every child is known, valued, and empowered to become a confident, responsible, and thriving individual who makes a positive impact on the world.

By educating for life in all its fullness, we are preparing our students for a bright future. We believe that our pupils will be confident, resilient, and well-rounded individuals who are ready to make a positive impact on the world.

A #StEDDIE is a proud member of our school community who embodies our Christian values in all aspects of their life.

'Sixcess' Values:

Our 'Sixcess' Values underpin everything we do at St. Edmund's. They are the guiding principles for our relationships, learning, and actions.

Respect: We treat everyone with dignity and kindness, valuing diversity and celebrating individuality.

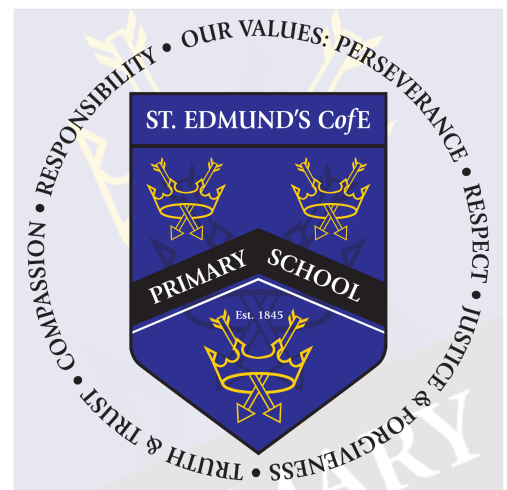
Responsibility: We are accountable for our actions and choices, demonstrating reliability and self-discipline.

Perseverance: We approach challenges with determination and resilience, learning from setbacks and striving for excellence.

Truth and Trust: We build strong relationships based on honesty, integrity, and reliability.

Justice and Forgiveness: We promote fairness, equality, and compassion, seeking to reconcile and restore relationships.

Compassion: We show empathy and care for others, demonstrating kindness and generosity of spirit.



Together, inspired by Christian values, we embark on a journey to discover life in all its fullness, equipping our children to flourish and leave their positive mark on the world.

School Prayer:

Lord,

Bless this day and all it brings.

Thank you for our school; Make it a place of laughter and friendship, let our school be a place where we can learn and share our hopes and dreams.

Bless our lives, that we may grow in your love. Help us show forgiveness when people make mistakes - even when we have been hurt.

Bless our work, that we use our gifts and talents wisely. Encourage us to persevere when things are challenging.

Bless our hearts and teach us to care for one another.

Amen.

The school's new prayer aligns closely with the Church of England's vision for a deeply Christian education system. By fostering a culture of respect, responsibility, and perseverance, the school is actively contributing to the development of well-rounded individuals.

Our new school prayer embodies the spirit of John 10:10, which promises a life of abundance and fulfilment. By nurturing a flourishing culture, we are creating an environment where our pupils can succeed and reach their full potential.

We are delighted to introduce our new school prayer, which has been thoughtfully chosen by our staff and children. This prayer reflects our commitment to fostering a positive and nurturing learning environment where our pupils can thrive.

The prayer incorporates our school's "Sixcess" values: respect, responsibility, perseverance, truth and trust, compassion, justice, and forgiveness. These values are fundamental to our school community and guide our daily interactions.

We hope that this prayer will inspire our pupils to develop a sense of belonging, compassion, and resilience. It is our belief that by embracing these values, we can create a school where everyone feels safe, supported, and valued.

School Expectations:



Our School Expectations:

Our behaviour policy is underpinned by our Christian values of **respect**, **truth and trust**, **compassion**, **responsibility**, **justice and forgiveness**, and **perseverance**. These values are integral to creating a positive and nurturing learning environment where all pupils feel safe, valued, and empowered to reach their full potential.

Parents and carers:

Parents and carers, where possible, should:

- * Support their child in adhering to the school's behaviour policy
- * Inform the school of any changes in circumstances that may affect their child's behaviour
- * Discuss any behavioural concerns with the class teacher promptly
- * Take part in any pastoral work following misbehaviour (for example, attending reviews of specific behaviour interventions)
- * Raise any concerns about the management of behaviour with the school directly, while continuing to work in partnership with the school
- * Take part in the life of the school and its culture

5 Pillars of Pivotal Practice:



The school will endeavour to build a positive relationship with parents and carers by keeping them informed about developments in their child's behaviour and the school's policy, and working in collaboration with them to tackle behavioural issues.

Ready to learn;

Respectful of themselves and others;

Responsible in school

Drawing upon the Church of England's values and aims for flourishing schools, we believe in:

- Educating for Dignity and Respect: Promoting the inherent dignity and value of every person, created in the image of God. We celebrate diversity and encourage children to treat everyone with kindness, compassion, and respect.



School Uniform:



Our children wear:	PE Kit
<ul style="list-style-type: none">• Polo shirts, shirts or blouses in white or blue• Sweatshirts, cardigans or jumpers in royal blue• Long trousers or shorts in grey or black• Knee-length skirts in grey or black• Pinafore dresses in blue• Socks and/or tights in white, grey or black• Black shoes or plain black/grey trainers with no logos (sensible boots may also be worn in bad weather)• All shoes must have a low heel <p>School uniform does not have to have our logo on it. You are very welcome to purchase non-branded uniform from a supermarket or other supplier, as long as the colours match ours.</p>	<ul style="list-style-type: none">• Plain white or blue t-shirt, or a t-shirt with our school logo• Shorts/tracksuit bottoms in blue or black• Sensible trainers for outdoor use or plimsolls• Tracksuit top or jumper in blue or black <p><u>Jewellery</u></p> <p>Jewellery is not to be worn by pupils in school.</p> <p>On the day that your child has PE, they should come to school in their PE kit instead of their usual school uniform. This saves time with getting changed in school and also avoids items of clothing getting lost.</p>

For branded school uniform, check out this website: myclothing.com



News 1: Lincoln Castle



Year 2 had a fantastic time exploring Lincoln Castle on their recent field trip! The visit perfectly complemented their learning about history and provided them with a unique opportunity to experience real-life history firsthand. The children were captivated by the castle's impressive architecture, fascinating exhibits, and the opportunity to climb the castle walls. They were particularly excited to see the Magna Carta, one of the most important documents in English history. This hands-on experience brought their learning to life and helped them develop a deeper understanding of the past.



News 2: New Signage

We're excited to announce the completion of our new school signage, featuring our logo and values prominently around the grounds and premises. A huge thank you goes out to **SignPower** (<https://signpower.co.uk>), a family-owned business, for their exceptional work on this project! The new signage not only enhances the visual appeal of our school but also serves as a constant reminder of our shared identity and the values that guide our community. It's a wonderful feeling to be part of a team that is working together to create a positive and welcoming environment for our pupils. As we embark on this new era, our new signage symbolises a fresh start and our commitment to taking St. Edmund's to even greater heights.





News: Hello Yellow Day

We're thrilled to share that our 'Hello Yellow' initiative in support of World Mental Health Day was a resounding success! This annual event aims to raise awareness of mental health issues and encourage open conversations about wellbeing. Our school community came together to raise an impressive £159 for Young Minds, a charity dedicated to supporting the mental health and wellbeing of young people. We're incredibly proud of our pupils, staff, and parents for their generosity and commitment to this important cause. Thank you for helping us make a positive impact on the lives of young people and promote the importance of mental health awareness.



YoungMinds

Thank you so much for your support for [#HelloYellow](#). We hope you had an amazing day. We couldn't be more grateful! From all at YM

2m Love Reply Hide

1



Write a reply...

help me tackle the emergency in youth
mental health

30 days left



St Edmund's CofE is
fundraising on behalf of YoungMinds

£159

Target
£150

News: Year 6 Mining Visit

Our Year 6 pupils had a fantastic time exploring the Mansfield Mining Museum on their recent field trip! The visit perfectly complemented their learning about history and provided them with a unique opportunity to experience firsthand the challenges and hardships faced by miners in the past. The children were captivated by the museum's interactive exhibits, fascinating displays, and the opportunity to go underground into a real mine shaft. This hands-on experience brought their learning to life and helped them develop a deeper understanding of the region's industrial heritage.

Quote from the Museum: Your Year 6 pupils have been amazing and are a credit to the school!



News: Learning Environments

We're excited to announce a significant improvement to our learning environments! For the past few years, the key stage 2 carpets had definitely seen better days and required replacement...

Thanks to the hard work and dedication of our team, we've been able to replace all of these carpets, creating more stimulating and comfortable spaces for our learners.

We extend a huge thank you to **United Carpets** (Mansfield), **The Carpet Store**, **AB Waste Disposal**, and local carpet fitters (**JP Flooring**), for their support in making this project possible without incurring significant financial implications. Their generosity and expertise have been invaluable in transforming more conducive learning environments.



News: Harvest

Our annual Harvest Festival was a resounding success, thanks in large part to our amazing Year 6 pupils who led the service. They were true #StEDDIES, demonstrating exceptional leadership, enthusiasm, and compassion. We were overwhelmed by the generosity of our school community, who together donated an impressive 66 kilograms of food. Thank you to everyone who participated in this wonderful event.

Email quote: *On behalf of Sherwood Forest Food bank, I would like to say a big thank you for the Harvest Festival donation we received. The food weighed in at 65.70kg, which equates to 204 meals for local people in crisis.*



News: Published Author

We're thrilled to celebrate the incredible achievement of Dylan, a Year 5 pupil, who has just published his second book, "Beyond the Border"! Dylan's passion for writing and his dedication to his craft are truly inspiring. His latest book is a testament to his talent and creativity, and we're so proud of all he's accomplished. Reading is a vital part of our school culture, and Dylan is a wonderful role model for his peers. We encourage everyone to support Dylan by purchasing his book on Amazon. Congratulations, Dylan!

I have already received messages requesting for Dylan's expertise and journey to be discussed and shared with other children at other schools!

https://www.amazon.co.uk/Beyond-Border-Journey-Continues-Adventures-ebook/dp/B0DH2S43BP?ref_=ast_author_mpb



News: Donated Books

We are incredibly grateful for the generous donations of books that we have received from our parents and the local community. Your kindness and support have significantly enriched our school library, providing our pupils with a wider range of exciting and engaging reading materials. These new books will inspire a love of learning, foster creativity, and broaden our children's horizons. We are truly thankful for your generosity and the positive impact it will have on our students' educational journey.

Thank you again for your generous contributions and for helping us create a vibrant and stimulating learning environment for our children



News: Sports Events:

Remember, all of our sporting ventures and achievements can be viewed on our social media platforms (Facebook and/or Instagram) 👍

Mr Hayes commented:

"Our Y3/4 girls had a fantastic time taking part in some skills games, then taking part against some schools...ending up unbeaten.

Well done, everyone!"

"A fantastic effort by our Y5 cross country team. Everyone tried their best to finish the 1200 metre course. It was amazing to see them run over a longer distance! A definite showing of perseverance!

Well done, everyone".



News: Leavers Hoodies!

We're excited to announce a change to our leavers hoodie delivery schedule! In the past, Year 6 pupils have received their hoodies around April time. However, we believe that it's more meaningful for them to have them as close to the start of the academic year as possible. This way, they can wear their hoodies with pride throughout the year and feel a strong sense of belonging to the St. Edmund's community.

A huge shout-out to **SignPower** for their excellent work in supplying and printing these high-quality hoodies and **BWB Roofing Ltd** for offering to sponsor the cost for our Year 6 pupils. We're so grateful for their support and dedication.


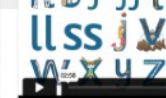
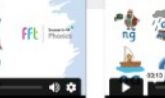
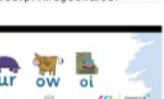


#classof2025 #StEDDIES #leavershoodies



— VIA




An illustration of a family of four sitting on a grey sofa. A woman with dark hair and a red bow, wearing a yellow shirt and blue pants, is sitting on the left, holding a large open book. A man with dark hair, wearing an orange shirt and blue pants, is sitting on the right, holding a small child in a blue shirt and purple pants. Another child with dark hair, wearing a yellow shirt and blue pants, is sitting between the woman and the man, also looking at the book. Above the sofa is a small shelf with three potted plants. The floor is covered with a colorful striped rug.

 <p>FFT Success for All Phonics ...</p> <p>FF1 Education</p> <p>This video includes pronunciation guidance for the following GPCs: sat pin md g oc k ick ous</p>	 <p>FFT Success for All Phonics ...</p> <p>FF1 Education</p> <p>This video includes pronunciation guidance for the following GPCs: h b f ff ll ss j v w x y z</p>	 <p>FFT Success for All Phonics ...</p> <p>FF1 Education</p> <p>This video includes pronunciation guidance for the following GPCs: zz qu ch sh th ng ai ee igh oo ar</p>
 <p>FFT Success for All Phonics ...</p> <p>FF1 Education</p> <p>This video includes pronunciation guidance for the following GPCs: or ur ow oi ear air ure er</p>	 <p>FFT Success for All Phonics ...</p> <p>FF1 Education</p> <p>This video includes pronunciation guidance for the following GPCs: ay ou ie ay ir ue aw ew</p>	 <p>FFT Success for All Phonics ...</p> <p>FF1 Education</p> <p>This video includes pronunciation guidance for the following GPCs: a e i o u</p>

* click the picture above to be taken to the support videos.

and achieve.



Attendance:

Face-to-face education is important in helping pupils to fulfil their potential.

During school time, we believe pupils should be in class with their teachers and peers and enjoying all the benefits that brings.

Parents or carers of a child(ren), have a legal responsibility to ensure their child receives a suitable education. This is usually achieved through regular attendance at school.

For more information: [DfE: Importance of attendance](#)

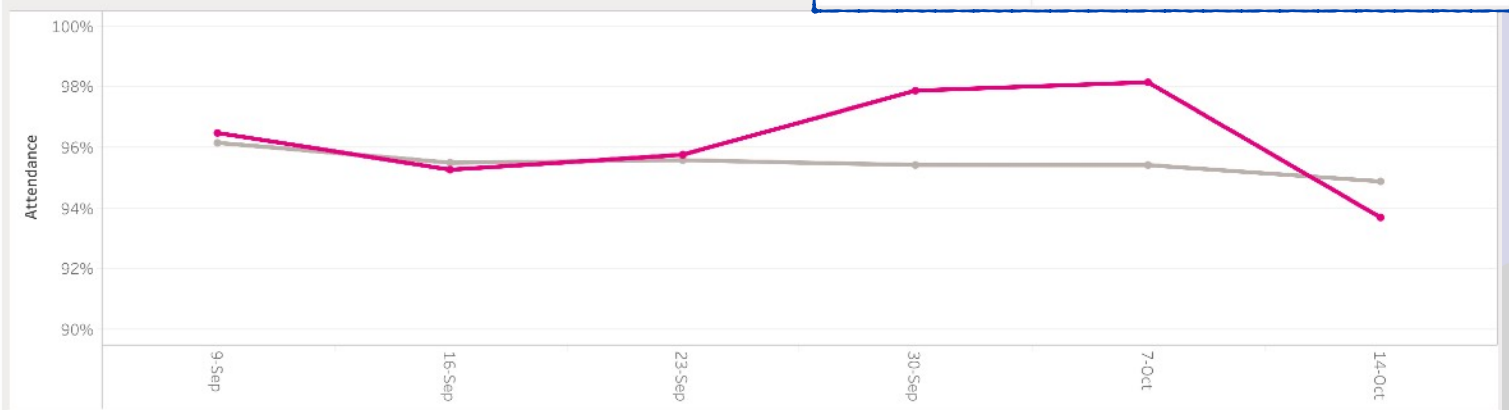
**School
Target:**

96%

School vs National Data:

Attendance summary

School attendance (pink line) | FFT national attendance (grey line)



We're delighted to share that our school attendance from September 9th to October 14th has achieved an impressive +0.8% score compared to the national average (Year to Date (YTD)). This is a fantastic accomplishment that reflects the commitment of our pupils, staff, and parents to ensuring regular attendance. Please keep it up, if we can... 👍

**190
DAYS
100%**



Very best
chance of
success

**183
DAYS
96%**



Off to a
flying
start

**179
DAYS
94%**



Less
chance of
success

**175
DAYS
92%**



Harder
to make
progress

**More than
18 days
absence less
than 90%**



Persistent
Absentee
(Not fair on your child)

Other News:

OUR LORD

Friday 25 October 2024

PRAYER FOR THE DAY

Grant, we beseech you, merciful Lord,
to your faithful people pardon and peace,
that they may be cleansed from all their sins
and serve you with a quiet mind;
through Jesus Christ our Lord.
Amen.



Useful Resources:

NHS

Nottinghamshire Healthcare
NHS Foundation Trust

BBC

**TINY HAPPY
PEOPLE**

NSPCC



**Nottinghamshire
County Council**



**THE CHURCH
OF ENGLAND**

Diocese of Southwell & Nottingham

Goodbyes:

We're filled with a mix of sadness and excitement as we say goodbye to our beloved Deputy Headteacher, **Hannah Pembury**. Hannah has been an integral part of the St. Edmund's family for a decade, and her dedication, compassion, and unwavering commitment to our pupils have made a profound impact on our school community. As she embarks on a new chapter closer to home, we wish her all the best in her future endeavours. We have no doubt that her nurturing spirit and exceptional leadership will continue to inspire and enrich the lives of the children she works with at her new school. It is with great pride that we know another county will experience the 'St. EDDY way' thanks to Hannah's invaluable contributions.





Friend's of St-Edmund's:

Friend's of St Edmund's are a Parent Group that exists to raise and use funds to enrich the school experience of St Edmund's Primary & Nursery School pupils.

What an opportunity!

In the new term, Friends for St. Edmund's are holding a competition...they are looking for a new logo and we need the children's help! The lucky winner will have their design digitalised and then selected to be the new logo that identifies Friends of St. Edmund's! Keep an eye out for the design template...



Coming soon...

(January 2025)

To join this wonderful team, please contact the school office for more information:

01623 646624

Upcoming Events:

St. Edmund's CofE

Bonfire Disco

Wednesday
6th
November

Foundation & Key Stage 1: 15:15 to 16:15
Key Stage 2: 16:30 to 17:30

The St. Edmund's Primary School

Christmas MARKET

6th DECEMBER 2024
2.45pm - 4.30pm
CASH ONLY

FREE ENTRY

ALL PROCEEDS SUPPORT PUPIL ACTIVITIES

OPEN TO ALL VISITORS

**SANTA'S GROTTO - TOMBOLA - ENTERTAINMENT
HOT FOOD - DRINKS - MARKET STALLS
CRAFTS - GIFT IDEAS - FAMILY GAMES**

St. Edmund's C of E Primary School,
Church Hill Avenue,
Mansfield Woodhouse, NG19 9JU



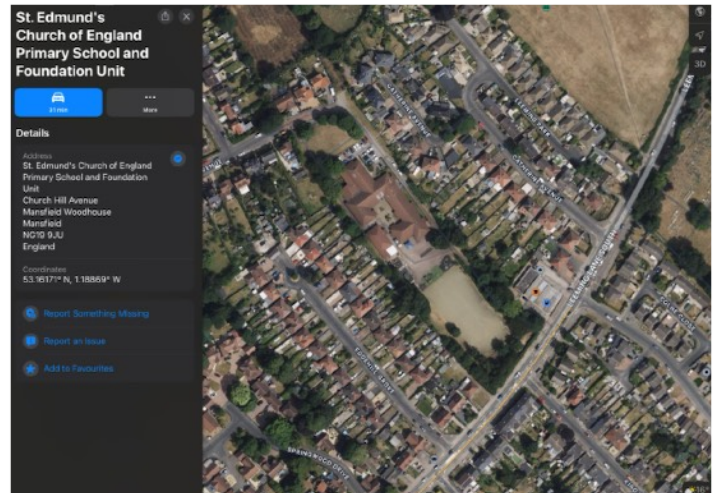
Contact Details:

We believe that our school offers a unique and nurturing environment where children can thrive academically, socially, and spiritually. Our focus on excellence, innovation, and pastoral care ensures that our pupils are well-prepared for their 'flourishing' future success.

#BeaconofExcellence #St.Eddies #SixcessValues #community

Address:

St. Edmund's CofE Primary & Nursery School
Church Hill Avenue
Mansfield Woodhouse
Nottinghamshire
NG19 9JU



www.st-Edmunds.notts.sch.uk



01623 646624



office@st-edmunds.notts.sch.uk



Follow us... (If you like) 👍



Arbor

Like

Share

Follow

*Please make sure that your contact details are up-to-date on arbor