

*Learning through faith, we dream,
we believe and achieve.* ”



Newsletter – Autumn 2025

01623 646 624

office@st-edmunds.notts.sch.uk

st-edmunds.notts.sch.uk

Find us on 

St. Edmund's CofE Primary
and Nursery School

....A journey to discover life in all its fullness

(John, 10:10)

#BeaconofExcellence #SixcessValues

Issue:

#5

Term:

Autumn

Date:

September 2025

Diary Dates:

Monday	Tuesday	Wednesday	Thursday	Friday	Saturday	Sunday
				1 Calendar 100 Day	2	3
4	5	6 St. Edmund's Day	7 St. Edmund's Day	8 St. Edmund's Day	9	10
11 St. Edmund's Day	12 St. Edmund's Day	13 St. Edmund's Day	14 St. Edmund's Day	15 St. Edmund's Day	16	17
18	19 St. Edmund's Day	20	21	22	23	24
25 St. Edmund's Day	26	27	28 St. Edmund's Day	29	30	

Found here: [School Calendar](#)

Key dates can be found on the
school website calendar.



Headteacher Message:

Dear Parents, Carers, and Friends of St. Edmund's,

A very warm welcome back to all our St. Eddie's family as we begin the Autumn term of 2025. The summer holidays already feel like a distant memory of ice creams, and rain showers (this is Britain after all). It will be wonderful to see our children return with big smiles, smart uniforms, and enough energy to power the National Grid!

We especially welcome our new starters in Nursery and Reception who are beginning their exciting journey with us, as well as new families joining higher up the school. You are now part of our community — a place where, rooted in faith, curiosity, and kindness, we grow and flourish together.

This year promises to be another full of discovery, creativity, and achievement. From new projects in Design Technology to developing our use of Chromebooks and iPads, we continue to dream, believe, and achieve. Our "Sixcess Values" will guide us, reminding us that learning is not just about knowledge, but about becoming responsible, compassionate, and confident citizens.

As always, thank you for your ongoing support. The partnership between home and school is what makes St. Edmund's thrive. Let's journey together this year "...to discover life in all its fullness" (John 10:10).





Vision, Aims & Values:

At St. Edmund's C of E Primary and Nursery School, we aspire to be a beacon of excellence, a vibrant and welcoming Christian community where all children flourish spiritually, academically, socially, and emotionally. Inspired by the teachings of the Bible, we foster a culture of curiosity, creativity, compassion, and service. Here, every child is known, valued, and empowered to become a confident, responsible, and thriving individual who makes a positive impact on the world.

By educating for life in all its fullness, we are preparing our students for a bright future. We believe that our pupils will be confident, resilient, and well-rounded individuals who are ready to make a positive impact on the world.

A #StEDDIE is a proud member of our school community who embodies our Christian values in all aspects of their life.

'Sixcess' Values:

Our 'Sixcess' Values underpin everything we do at St. Edmund's. They are the guiding principles for our relationships, learning, and actions.

Respect: We treat everyone with dignity and kindness, valuing diversity and celebrating individuality.

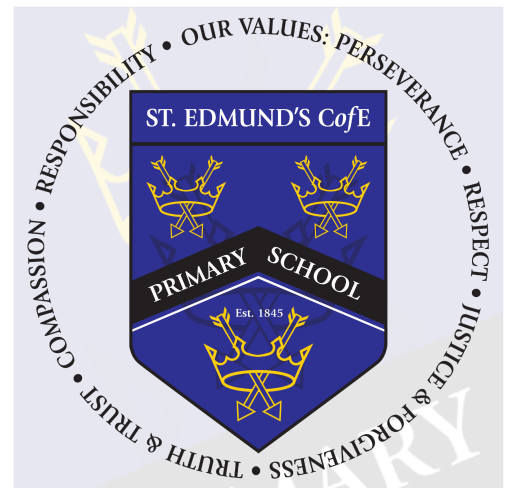
Responsibility: We are accountable for our actions and choices, demonstrating reliability and self-discipline.

Perseverance: We approach challenges with determination and resilience, learning from setbacks and striving for excellence.

Truth and Trust: We build strong relationships based on honesty, integrity, and reliability.

Justice and Forgiveness: We promote fairness, equality, and compassion, seeking to reconcile and restore relationships.

Compassion: We show empathy and care for others, demonstrating kindness and generosity of spirit.



Together, inspired by Christian values, we embark on a journey to discover life in all its fullness, equipping our children to flourish and leave their positive mark on the world.

School Prayer:

Lord,

Bless this day and all it brings.

Thank you for our school; Make it a place of laughter and friendship, let our school be a place where we can learn and share our hopes and dreams.

Bless our lives, that we may grow in your love. Help us show forgiveness when people make mistakes - even when we have been hurt.

Bless our work, that we use our gifts and talents wisely. Encourage us to persevere when things are challenging.

Bless our hearts and teach us to care for one another.

Amen.

The school's prayer aligns closely with the Church of England's vision for a deeply Christian education system. By fostering a culture of respect, responsibility, and perseverance, the school is actively contributing to the development of well-rounded individuals.

Our new school prayer embodies the spirit of John 10:10, which promises a life of abundance and fulfilment. By nurturing a flourishing culture, we are creating an environment where our pupils can succeed and reach their full potential.

We are delighted to introduce our new school prayer, which has been thoughtfully chosen by our staff and children. This prayer reflects our commitment to fostering a positive and nurturing learning environment where our pupils can thrive.

The prayer incorporates our school's "Sixcess" values: respect, responsibility, perseverance, truth and trust, compassion, justice, and forgiveness. These values are fundamental to our school community and guide our daily interactions.

We hope that this prayer will inspire our pupils to develop a sense of belonging, compassion, and resilience. It is our belief that by embracing these values, we can create a school where everyone feels safe, supported, and valued.

School Expectations:



Our School Expectations:

Our behaviour policy is underpinned by our Christian values of **respect**, **truth** and **trust**, **compassion**, **responsibility**, **justice** and **forgiveness**, and **perseverance**. These values are integral to creating a positive and nurturing learning environment where all pupils feel safe, valued, and empowered to reach their full potential.

Parents and carers:

Parents and carers, where possible, should:

- * Support their child in adhering to the school's behaviour policy
- * Inform the school of any changes in circumstances that may affect their child's behaviour
- * Discuss any behavioural concerns with the class teacher promptly
- * Take part in any pastoral work following misbehaviour (for example, attending reviews of specific behaviour interventions)
- * Raise any concerns about the management of behaviour with the school directly, while continuing to work in partnership with the school
- * Take part in the life of the school and its culture

5 Pillars of Pivotal Practice:



The school will endeavour to build a positive relationship with parents and carers by keeping them informed about developments in their child's behaviour and the school's policy, and working in collaboration with them to tackle behavioural issues.

Ready to learn;

Respectful of themselves and others;

Responsible in school

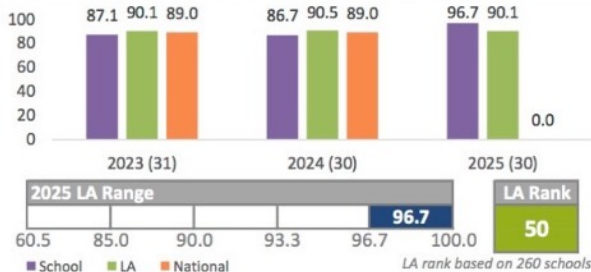
Drawing upon the Church of England's values and aims for flourishing schools, we believe in:

- Educating for Dignity and Respect: Promoting the inherent dignity and value of every person, created in the image of God. We celebrate diversity and encourage children to treat everyone with kindness, compassion, and respect.

News 1: Academic Achievements

All Pupils at end of Year 2

Percentage meeting the required standard



Last year was a truly remarkable one for St. Edmund's — the best set of outcomes we've seen in at least three years, and a testament to the hard work of our pupils, staff, and families.

- Phonics: Year 1 results rose sharply from **70% in 2024 to 83% in 2025**.
- By the end of Year 2, **97%** of children had secured the standard compared with **87%** the previous year. This places us 50th in the Local Authority and well above local and national averages.

Year 1 Phonics

Percentage meeting the required standard



This demonstrates that early reading is now becoming a strength of the school's provision, giving pupils a firm foundation for success in KS1 and beyond.

For more information about our phonics, please visit our website



Success for All
Phonics

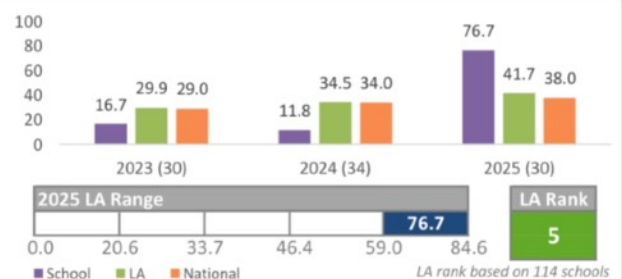
News 2: Academic Achievements:

- Multiplication Tables Check (Year 4): In 2025, **76%** of pupils achieved full marks compared with **12%** 2024. Overall fluency far exceeded local and national averages, ranking us **5th in the Local Authority**.
- Key Stage 2 SATs: In 2025, **86%** met the expected standard in reading, **79%** in grammar and maths, and **66%** in writing. The combined Reading/Writing/Maths measure improved from **60% in 2024 to 66% in 2025**, matching national outcomes. Higher standard attainment also rose, with more children showing depth in reading and maths.

These results mark fantastic improvements across the board and give us plenty to celebrate. But they are also a stepping stone. Our challenge for 2025/26 is to build on this momentum - to go again, close gaps even further, and ensure every single St. Eddie leaves us ready to flourish...

Scoring full marks

Percentage of eligible pupils scoring 25 (full marks)



Average score

Mean average score of those pupils taking the check



News: Renovations at St.Eddies:

Over the summer break, St. Edmund's has had a little makeover of its own! We are always striving to give our children the very best environment in which to learn and grow, and this year's improvements mean pupils have returned to brighter, fresher spaces designed to help them succeed.

- Our school **hall** has been repainted, ready to host everything from assemblies and PE to performances and community events.
- The **Nursery (EYFS)** has had a fresh coat of paint too, along with an investment in new resources, ensuring our youngest learners have the best tools and spaces to flourish.
- The **whole school** has also benefited from a deep clean, giving classrooms and corridors that "new term shine."

These improvements may look cosmetic on the surface, but they represent our commitment to providing children with the very best environment — one where they feel proud, inspired, and ready to learn.

A huge thank you to Rob Austin and his Premise team for this amazing work and commitment.



News: Deputy Head Incoming:

As you know, Mrs. Pembury left us in December, and we extend our sincere thanks to Mrs. Hird-Shaw for stepping up and acting as Deputy Headteacher since then. She has done a truly fantastic job, and her dedication to St. Edmund's has been invaluable.

We have some incredibly exciting news to share! Following a rigorous interview process, we are delighted to announce that we have appointed a new Deputy Headteacher! Even more exciting is that this new role will also incorporate the responsibility of SENCo and Inclusion. We are absolutely thrilled to welcome them to our team and are confident that they will be a wonderful asset to our school community. We will, of course, share more information about our new Deputy Headteacher as we get closer to their start date.

"I am so looking forward to becoming part of the St. Edmunds community in September and hope to be able to visit a few times before then.

I have been teaching in Nottingham city for the last few years and before that worked in Aylesbury and London. I am a passionate advocate for inclusion and creating environments where children can feel safe and thrive. I also love to look for opportunities for children to participate in things that take them outside of the classroom: residentials, trips and community visits are all an important aspect of school life.

I've recently given birth to a baby girl, Connie, who is a lot of fun. We love being outside and walking with the dog in our free time. I really look forwards to meeting you all!"

News: Book Trust Research:

Reading supports children to develop better mental wellbeing, social skills and strong relationships

They feel more secure and develop deep bonds with parents/carers

- As a bonding activity, shared reading in their early years supports the development of a child's attachment (how safe, secure and trusting they feel around their parent or carer). Attachment is essential to a child's future happiness, social competence, and ability to form meaningful connections.² The availability of their parent or carer¹⁰ during shared reading contributes to a child's sense of safety.¹¹

- Shared reading creates opportunities for joint attention and emotional closeness between a child and their parent or carer. Shared reading increases parental warmth and reduces parental stress¹², enabling them to provide the sensitive and nurturing interactions their children need to thrive.^{13,14}

Reading supports children to meet speech and language milestones and do better at school

They have better brain development, attention, and cognitive ability

- Children's brains experience the most growth in their first 5 years, when their brains are most responsive to their environment.¹⁵ Stimulation from reading books, playing, talking, and singing with a parent or carer serves an important neurological function, enhancing children's cognitive, physical, social, and emotional growth.¹⁶
- Shared reading among children from low-income backgrounds enhances healthy brain activation in language, attention, memory, self-control, and adjustment.¹⁷
- Reading for pleasure has long-lasting positive benefits on brain development. Younger children who read more score better on cognitive tests.¹⁸



[https://
www.booktrust.org.uk/
globalassets/resources/
research/booktrusts-
benefits-of-reading-
june-2024.pdf](https://www.booktrust.org.uk/globalassets/resources/research/booktrusts-benefits-of-reading-june-2024.pdf)

News: We Struck Gold!

We are incredibly proud to share that St. Edmund's has been awarded the Gold School Games Award by Sainsbury's School Games! 🎉

This fantastic achievement recognises our commitment to high-quality P.E., sport, and physical activity — both in and beyond the classroom. It reflects the dedication of our staff, the enthusiasm of our pupils, and the support of our whole school community.

👏 Last year, we achieved Silver... and this year we've gone one step further!

A huge well done to all of our amazing St. Eddie athletes and to the staff who go above and beyond to provide inspiring opportunities for every child to shine!



News: New Faces at St. Eddies:

Miss M Thrower: Has always had a passion for working with children since leaving school - from voluntary work, to then working her way to completing her Level 3 in Early Years Education and being a key Room Leader in her previous post.

"I am truly dedicated to delivering a wide range of learning opportunities for all children, which is in line with the school's '...a journey to discover life in all its fullness (John, 10:10). I really believe children need to see the world through their eyes and discover what a wonderful world we live in".

Mrs L Hamilton: Worked at Lambley Nursery for 11 years, becoming the manager of the setting, completing SENCo courses to support all learners and needs.

"My main love for the job is to watch children individually develop and watch their personalities blossom!"



News: New Faces/EYFS:

Mrs C Barnes: An experienced Childcare and education practitioner - from childminding to private nursery setting - adopting a holistic approach.

"I am very passionate about ensuring the environment, activities and play are purposeful, child appropriate, open-ended and most of all - FUN!"



News: PE Days:

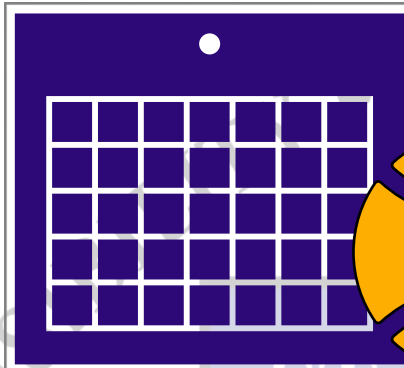
17 PE Days at St. Edmund's – Autumn Term 2025

We're excited to kick off a new school year full of energy and activity! Please take note of your child's PE days so they can come to school ready for fun, fitness, and learning:

- Monday – FS1, FS2 & Year 2
- Tuesday – Year 5 & Year 6
- Wednesday –
 - Year 4 & Year 5 (Swimming)
 - Year 1 & Year 3 (PE)
- Thursday – Year 3 & Year 2
- Friday – Year 1 & Year 4

On PE days, please ensure your child comes to school in their full PE kit (**white t-shirt & black shorts**) and appropriate footwear.

Thank you for your support in helping us keep PE days smooth and successful!



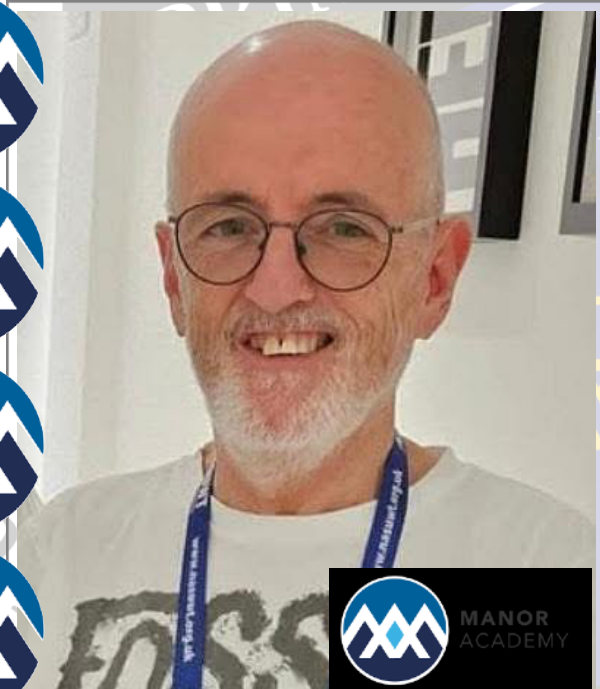
News: Our Thoughts & Prayers:

Message from Manor Academy:

Mr Bofinger, a much-loved member of our teaching staff has unexpectedly passed away on Saturday. Mr Bofinger has been part of our school community since 2017 and during that time touched the lives of countless pupils, families, and colleagues.

Mr Bofinger will be remembered not only for his dedication to teaching, but also for the warmth, kindness, and enthusiasm he brought to every aspect of school life and beyond within the community where he lived and in his previous teaching roles.

We know you will join us in keeping Mr Bofinger's family and friends in your thoughts at this incredibly sad time.



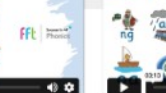





STAY



Success for All 

A stylized illustration of a man and a young child sitting together on a grey armchair. The man, with dark skin and short dark hair, is wearing an orange t-shirt and blue jeans. He is smiling and holding the child. The child, also with dark skin, is wearing a blue shirt and purple pants. They are sitting on a light-colored rug with orange and blue stripes. A small white ball is on the rug near the man's feet. The background is a plain, light yellow wall. To the left, a small shelf holds a potted plant and a yellow object. The floor is a solid reddish-brown color.

 <p>FFT Success for All Phonics ...</p> <p>FF1 Education</p> <p>This video includes pronunciation guidance for the following GPCs: s a t p i n m d g o c k i e u r</p>	 <p>FFT Success for All Phonics ...</p> <p>FF1 Education</p> <p>This video includes pronunciation guidance for the following GPCs: h b f l l l s s j v w x y z</p>	 <p>FFT Success for All Phonics ...</p> <p>FF1 Education</p> <p>This video includes pronunciation guidance for the following GPCs: z z q u c h s h t h n g a l y igh o o a r</p>
 <p>FFT Success for All Phonics ...</p> <p>FF1 Education</p> <p>This video includes pronunciation guidance for the following GPCs: o i u r o w o i e a r a i r u r e e r</p>	 <p>FFT Success for All Phonics ...</p> <p>FF1 Education</p> <p>This video includes pronunciation guidance for the following GPCs: a y o u i e e a i r a w</p>	 <p>FFT Success for All Phonics ...</p> <p>FF1 Education</p> <p>This video includes pronunciation guidance for the following GPCs: a e e e i e o o u e</p>

 <https://www.st-edmunds.notts.sch.uk/phonics/>



<https://www.st-edmunds.notts.sch.uk/phonics/>



Attendance:

Face-to-face education is important in helping pupils to fulfil their potential.

During school time, we believe pupils should be in class with their teachers and peers and enjoying all the benefits that brings.

Parents or carers of a child(ren), have a legal responsibility to ensure their child receives a suitable education. This is usually achieved through regular attendance at school.





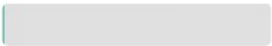
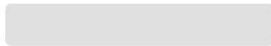
For more information: [DfE: Importance of attendance](#)

**School
Target:**

96%

School vs National Data:

Pupil Attendance

Period 1: 01/09/2024 > 24/06/2025		Period 2: 01/09/2023 > 24/06/2024		National %	Period 1 v National
Overall attendance	 95.1%	Overall attendance	 92.3%	95%	+0.10% ●
Persistent absence	 10.6%	Persistent absence	 18.8%	18%	-7.40% ●
Severely absent	 0.7%	Severely absent	 0%		

We're delighted to share that our school attendance from last academic year has achieved an impressive +0.1% score compared to the national average (Year to Date (YTD)) and a significant improvement from the previous year. This is a good accomplishment that reflects the commitment of our pupils, staff, and parents to ensuring regular attendance. However, this is still slightly below our school target. Please keep it up, if we can... 👍



Other News: Community Champions!

At St. Edmund's we are blessed with a wonderfully supportive community, and we want to extend our heartfelt thanks to the local businesses and partners who have helped us over the summer. Their generosity and expertise have made a real difference to our school:

- Sign Power – for fresh signage and marketing that ensures our school looks as welcoming on the outside as it feels on the inside.
- CYK Spray – for giving our tired, worn-out furniture a stylish second lease of life. Sustainability and savings in one!
- Mansfield Work Tops – for helping us transform our new staffroom into a modern, uplifting space that supports staff well-being.
- Nesstar Ltd – for providing sinks and hot taps in the staffroom, making those much-needed cups of tea and coffee quicker and easier — a little boost for staff mental health.
- Weed Free Ltd – for maintaining our grounds and keeping our playgrounds safe, tidy, and welcoming for our children.

We are truly grateful for this support. These partnerships not only improve our facilities but also show our children the value of teamwork, generosity, and community spirit.



Useful Resources:



Nottinghamshire Healthcare
NHS Foundation Trust



TINY HAPPY
PEOPLE

NSPCC



Nottinghamshire
County Council



THE CHURCH
OF ENGLAND

Diocese of Southwell & Nottingham

eurocell

Business Sponsorship (Year 6 Leavers Hoodies):

We are delighted to announce that Eurocell have kindly agreed to sponsor this year's **Year 6 leavers' hoodies**. Their generosity means our oldest St. Eddies will leave us not only with treasured memories but also with a special keepsake to mark their time at St. Edmund's.

We are aiming to have the hoodies ready as soon as possible this term so that the children can wear them with pride throughout the year — a daily reminder of their journey and achievements before they take their next big step.

A huge thank you to **Eurocell** for supporting our pupils in such a meaningful way — we know the hoodies will be worn with pride all year long (and probably long after, too!).

#St.EdSUPPORT:

If you need to chat
this Time To Talk Day



0300 102 1234
Open 9am-6pm weekdays

SAMARITANS

116 123
Always open



0800 58 58 58
Open 5pm - midnight

If you're in Wales:



0800 132 737
Always open

If you're under 25:



Text THEMIX
to 85258
Always open

Share and save this post



Mind
6 Feb •

It can be uncomfortable to open up and share how we're really feeling. But talking openly and honestly can be the first step towards better mental health for everyone.

Time to Talk Day is the nation's biggest mental health conversation. Each year, it helps friends, families, communities and workplaces to have millions of conversations about mental health across the UK.

This Time to Talk Day, we're asking people to get comfortable and start talking about mental health. So if you find yourself fancying a brew, perhaps talk it through. [Co-op Rethink Mental Illness](#) [#TimeToTalk](#)

NottAlone
It's OK not to be OK



How
are you,
really?

Local mental health
advice and help
for young people
in Nottingham and
Nottinghamshire, with
support for parents too.

nottalone.org.uk
[#NottAlone](#)

#STED-SUPPORT

Home > Key Information > #STED-SUPPORT

At St. Edmund's CofE Primary and Nursery School, we prioritise the well-being of our students and their families.

Introducing #StEdmundsSUPPORT, our dedicated team is committed to providing excellent support for both children and parents/carers alike.

We uphold our Sixness Values of **compassion, perseverance, responsibility, respect, truth and truth, and justice and forgiveness** in all that we do.



We understand that parenting can sometimes be challenging, and we're here to help. Our experienced staff are always available to address your questions, concerns, and provide guidance whenever you need it. While face-to-face meetings may not always be possible, we have curated a range of valuable resources and links on this page to support you.

Whether you're seeking advice, information, or access to external agencies, our #StEdmundsSUPPORT resources aim to empower you with the knowledge and tools to navigate any situation. We believe that by fostering a strong partnership with parents and carers, we can help our children thrive and reach their full potential.

Let us provide you with even better support at St. Edmund's CofE Primary and Nursery School.

Who's Who?



Mrs Hird-Shaw: Senior Mental Health Lead



Mrs Walker: ELSA Practitioner

#StEdSUPPORT Resources:



Nottinghamshire
Family Hub Network



Helping families get the right support at the right time



<https://www.st-edmunds.notts.sch.uk/sted-support/>



St. Edmund's Church:

A fantastically friendly church in the heart of
Mansfield Woodhouse

12 Fri 20 Dec

St. Ed's Church Mansfield Woodhouse



St. Ed's Church Mansfield Woodhouse

70 likes • 119 followers

St. Edmund's, a fantastically friendly Church in the heart of Mansfield Woodhouse.

Following

Send Email

Posts About Photos Mentions

Details

Page · Church

Church Street

+44 1623 629665

office@stedschurch.org.uk

st.edschurch_mw



Our vision here at St. Ed's

Our Vision at St. Ed's is to bring God's heart to the heart of the community. We don't believe that we take God out into the community, rather that we go out in to the community and join in with what he is already doing

St. Ed's has been embedded in the heart of the community for over 700 years. Today we engage with our community in lots of different ways; providing affordable clothes and household items through our charity shop, The Partnership, which donates profits to local, national and international charities. We provide great, affordable food and a welcoming warm space in our Stable Centre Café. We host and run the Trussell Trust Sherwood Forest Foodbank to meet the needs of those who have fallen on harder times in our community. We seek to support local schools and families. And we seek to support all who come to us to mark life's events from cradle to grave. Whether you are rejoicing, grieving, anxious or simply trying to take one day at a time we welcome you

Through all of these things we bring the love of Jesus to the community and have opportunities for people to find out more about the Christian faith through attending one of our Alpha Courses

St. Ed's is part of the Diocese of Southwell and Nottingham. As we grow forward into the future we will be following the Diocesan vision of "Growing Disciples of Christ with Compassion, Confidence and Courage"



Opening Times

Sunday	Monday	Tuesday	Wednesday	Thursday	Friday	Saturday
Closed	1:30pm-4:00pm	Closed	10:30am-12:30pm	1:30pm-3:45pm	Closed	Closed
	St. Ed's Turner Hall		St. Peter's Mansfield	St. Ed's Turner Hall		

Events:

September 2025							Today
Sun	Mon	Tue	Wed	Thu	Fri	Sat	
31 Morning P... Alight	1	2 Little tEds... + 3	3 Zoom Pra... Mothers' U...	4 Small Gro...	5 Flea Market	6	
7 Holy Com... Alight	8	9 Little tEds... + 3	10 Zoom Pra... Cameo - L...	11 Small Gro...	12 Flea Market	13	
14 Morning P... Alight	15	16 Little tEds... + 4	17 Zoom Pra...	18 Small Gro...	19 Flea Market	20	
21 Holy Com... Alight	22	23 Little tEds... + 3	24 Zoom Pra... Cameo Gr...	25 Small Gro...	26 Flea Market	27	
28 Holy Com... + 3	29	30 Little tEds... + 3	1 Zoom Pra... Mothers' U...	2 Small Gro...	3 Flea Market	4	



<https://www.stedschurch.org.uk/what-s-on>



[https://
www.facebook.com/
profile.php?
id=61553968214035](https://www.facebook.com/profile.php?id=61553968214035)

Missed Letters:



<https://www.st-edmunds.notts.sch.uk/letters-home/>



LETTERS HOME

Home > Key Information > Letters home

Staffing Changes and Nursery Re-Structure



Redundancy Letter to parents.pdf

Transition 2025-2026



Transition letter 2025 26.pdf

Update on Financial Situation



Financial situation to parents.pdf

World Book Day 2025



World Book Day 2025!.pdf

Y5 Viking Trip Mansfield Museum



Y5 Mansfield Museum Trip - 27th Feb 2025.pdf

Y1 Flying High Wow Day



Flying High WOW Day - Year 1.pdf

Valentines Disco 2025



Valentines Disco 2025.pdf

Staying Informed: Accessing Important School Letters

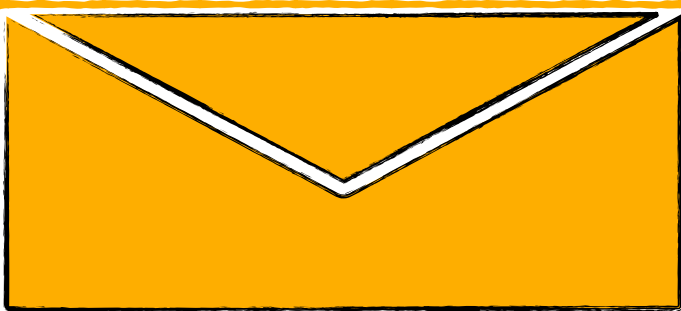
We understand that keeping track of all school communications can be challenging. To ensure you don't miss any important information, we have created a dedicated page on our school website where we upload all letters sent home to families.

This page serves as a central hub for all official school correspondence, including:

- **Important notices:** Upcoming events, school closures, and other critical information.
- **Curriculum updates:** Information about your child's learning, including termly newsletters and subject overviews.
- **Trip information:** Details about upcoming school trips, including consent forms and payment information.
- **Homework information:** Reminders and important deadlines for upcoming homework assignments.
- **PTA letters and information:** Important updates from the Parent Teacher Association, including details about upcoming events, fundraising activities, and volunteer opportunities.
- **Policy documents:** Easy access to important school policies, such as our behaviour policy and uniform guidelines.

We encourage you to visit this page regularly to stay informed about all aspects of school life.

Remember: This page complements our other communication channels, including the Arbor app and our Facebook page.





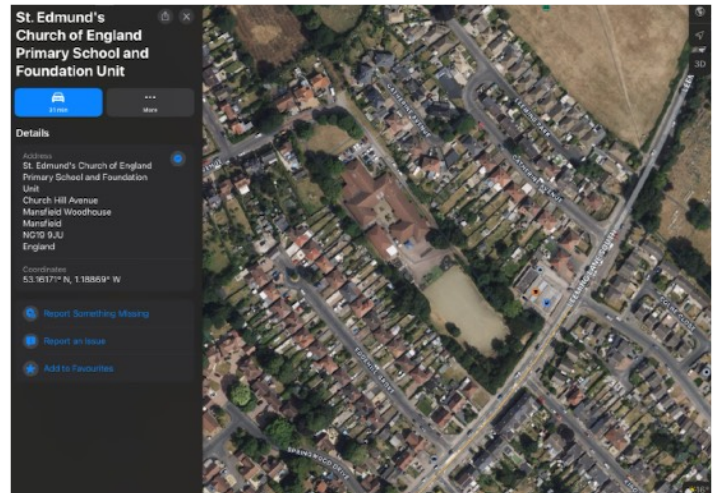
Contact Details:

We believe that our school offers a unique and nurturing environment where children can thrive academically, socially, and spiritually. Our focus on excellence, innovation, and pastoral care ensures that our pupils are well-prepared for their 'flourishing' future success.

#BeaconofExcellence #St.Eddies #SixcessValues #community

Address:

St. Edmund's CofE Primary & Nursery School
Church Hill Avenue
Mansfield Woodhouse
Nottinghamshire
NG19 9JU



www.st-Edmunds.notts.sch.uk



01623 646624



office@st-edmunds.notts.sch.uk



Follow us... (If you like) 👍



Like

Share

Follow

*Please make sure that your contact details are up-to-date on arbor